
Subject: Computer fell off a cliff

Posted by [Starbuzz](#) on Wed, 28 Sep 2011 23:02:16 GMT

[View Forum Message](#) <> [Reply to Message](#)

hey guys, due to a terrible accident my computer fell off the 2 feet high table it was on. It is a carpeted floor and other than some nicks and scratches on the case...everything seems ok.

So I took it apart and checked for more damage inside. I made sure all the connections are secure to the mobo...several had become loose (the sound/front usb etc etc). To good measure, I also ended up brushing away loads of dust and used a blower to get all the dust out. The HDD's on their mount had dislocated and I put them back. I also checked if the power/data connections are secure.

So I booted up and no problems whatsoever. However, it may just be my ears playing tricks but I feel the processor fan is now running full all the time. Again, this may just be my ears playing tricks but I just never heard the fan being slightly more noisy...

Can you give me some hints on how to proceed? As of this moment, I am gonna shut down and check the processor area again...to see if I need to reseat it or not. I forgot to check that place.

thanks!

Subject: Re: Computer fell off a cliff

Posted by [iRANian](#) on Wed, 28 Sep 2011 23:59:11 GMT

[View Forum Message](#) <> [Reply to Message](#)

ask spoony for advice and pill yourself together renecommando.

Subject: Re: Computer fell off a cliff

Posted by [Starbuzz](#) on Thu, 29 Sep 2011 01:52:20 GMT

[View Forum Message](#) <> [Reply to Message](#)

^ no Prince of Persia's allowed!

After some more poking around I found the fan that is making all the noise is the little one from my video card; not the mobo fans or the case fans. Today when I cleaned the video card it was choked with dust.

Tommorrow I am going to remove the little fan from the video card and do more cleaning on the backside too.

Subject: Re: Computer fell off a cliff

Posted by [F1r3st0rm](#) on Thu, 29 Sep 2011 04:36:23 GMT

[View Forum Message](#) <> [Reply to Message](#)

so what's your problem here, your fans became louder but no visible damage anywhere on the internal parts?

Subject: Re: Computer fell off a cliff
Posted by [Starbuzz](#) on Thu, 29 Sep 2011 04:50:56 GMT
[View Forum Message](#) <> [Reply to Message](#)

F1r3st0rm wrote on Wed, 28 September 2011 21:36so what's your problem here, your fans became louder but no visible damage anywhere on the internal parts?

correct...I don't see any damage anywhere. The HDD's are also fine (not making any clicking noises etc etc).

I guess I am just anxious about the louder-than-usual video card fan. After several reboots now, by the time I sign in to the desktop, the fan on it is running high. Something happened during the fall to make the video card fan go full and hence loud.

Subject: Re: Computer fell off a cliff
Posted by [danpaul88](#) on Thu, 29 Sep 2011 08:28:17 GMT
[View Forum Message](#) <> [Reply to Message](#)

Could be the thermal sensor became dislodged so the fan controller on the video card has no thermal data to help it decide the correct fan speed so it simply runs at full as a fallback measure.

Subject: Re: Computer fell off a cliff
Posted by [Caveman](#) on Thu, 29 Sep 2011 13:48:17 GMT
[View Forum Message](#) <> [Reply to Message](#)

Download RivaTuner and see what the fans are spinning at, if you need help with how to use it let me know.

When your system is idling your GFX fan should be spinning @ 1500rpm +/- 100RPM if its running faster then you should be able to manually set the fan speed to 25% which should help you.

Subject: Re: Computer fell off a cliff
Posted by [Starbuzz](#) on Thu, 29 Sep 2011 14:51:48 GMT
[View Forum Message](#) <> [Reply to Message](#)

ty both! I will check the parts of the card again (ATI 4650 btw) with danpaul's tip.

Last night I took the entire card apart, took the heatsink off, removed the fan and cleaned everything again. There were so much thickly crusted hidden dust on the underside. And I removed the old thermal paste from the processor and put new.

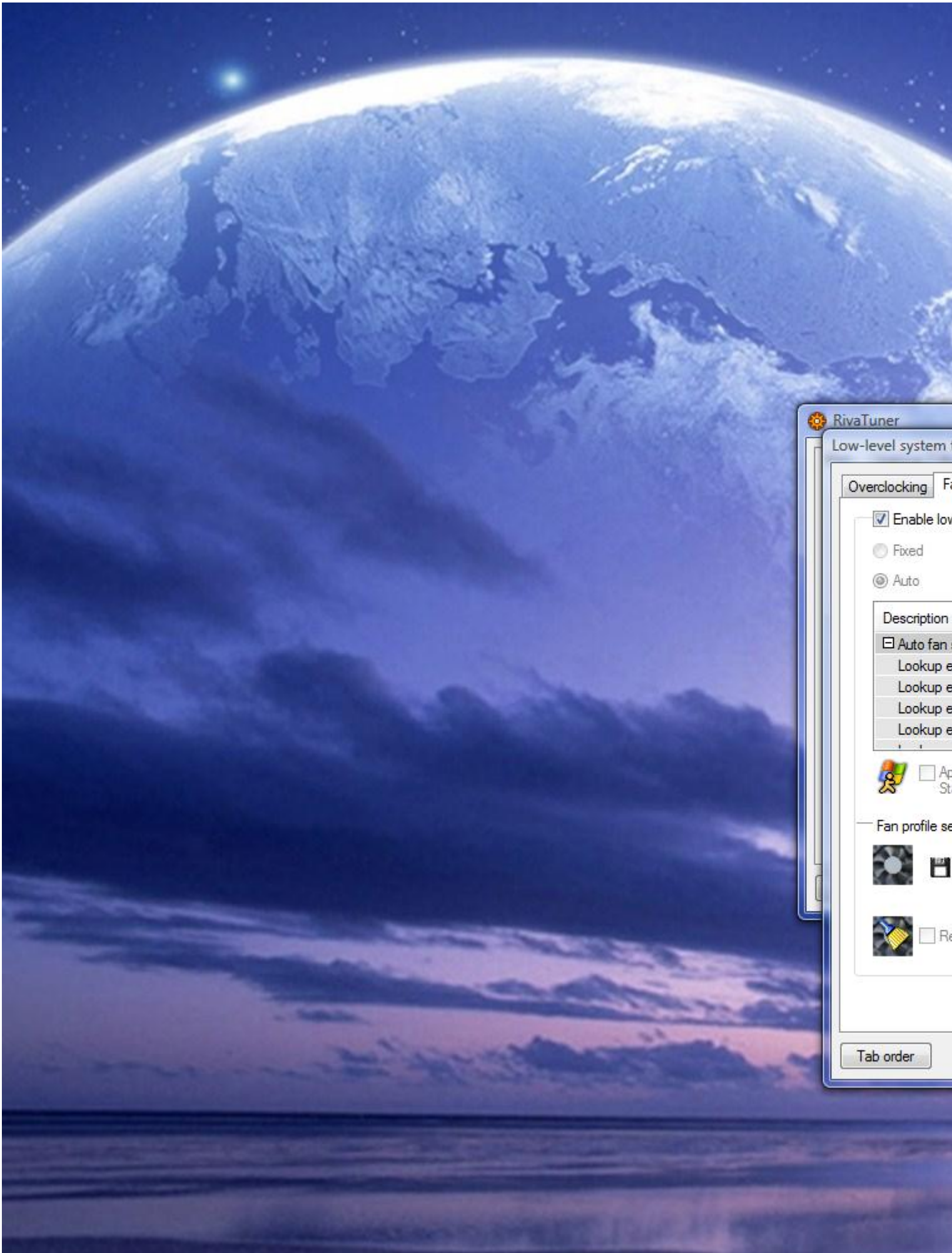
thanks Caveman, I downloaded RivaTuner and looking at the fan control settings. I attached a screenshot...should I do the Reboot to detect?

Toggle Spoiler

Thanks!

File Attachments

1) [RivaFans.jpg](#), downloaded 1535 times



RivaTuner

Low-level system t...

Overclocking Fan

Enable low...

Fixed

Auto

Description

Auto fan...

Lookup e...

Lookup e...

Lookup e...

Lookup e...

 Ap...
St...

Fan profile se...

 Re...

Tab order

Subject: Re: Computer fell off a cliff
Posted by [Caveman](#) on Thu, 29 Sep 2011 15:00:57 GMT
[View Forum Message](#) <> [Reply to Message](#)

Since we don't know if its at default state id reboot and run it again.

I'll be here for another 30mins so i'll be able to walk you through it.

Subject: Re: Computer fell off a cliff
Posted by [Starbuzz](#) on Thu, 29 Sep 2011 15:06:35 GMT
[View Forum Message](#) <> [Reply to Message](#)

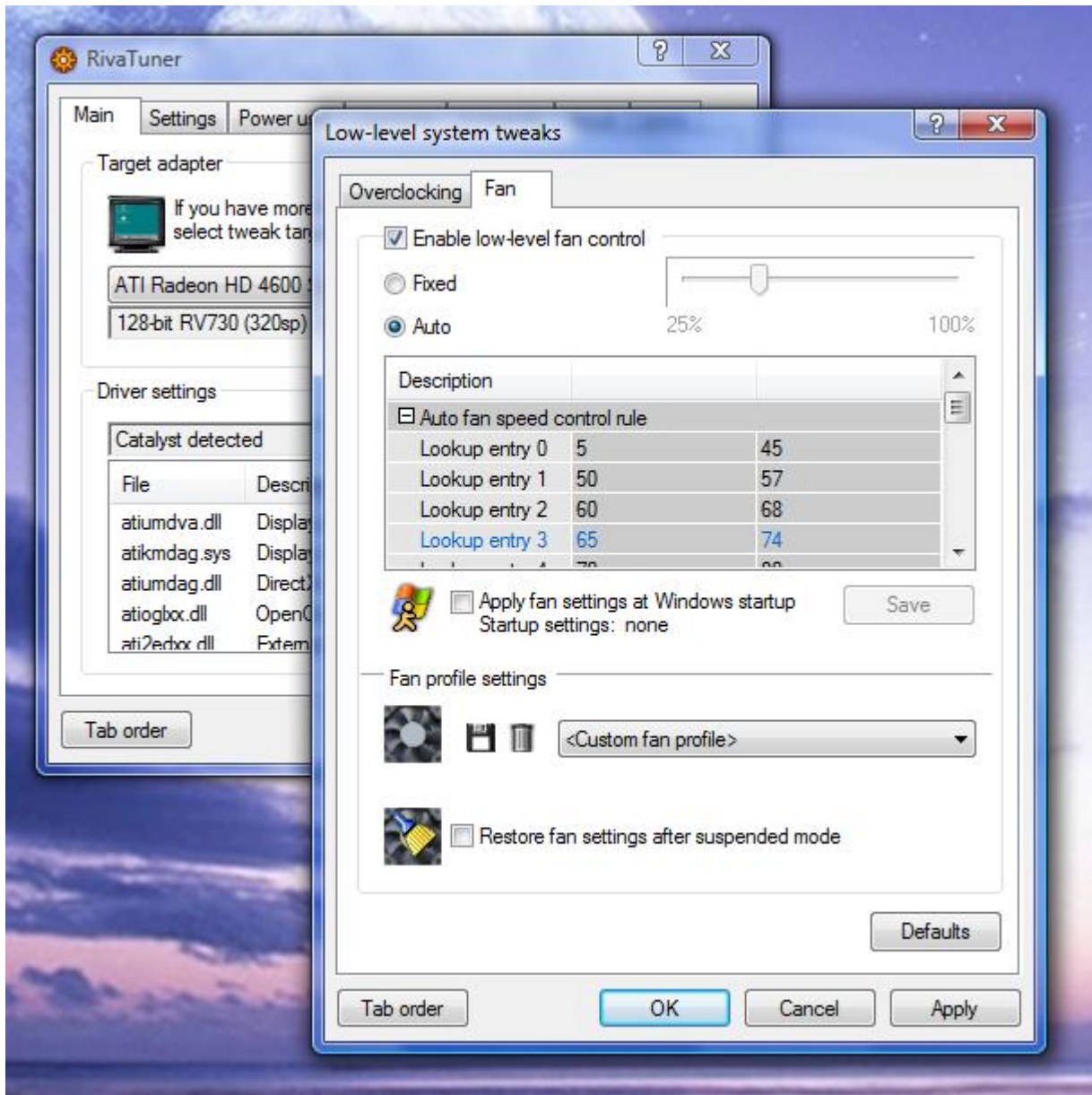
thanks Caveman! I really appreciate it! I will reboot now and update this post in a few mins.

edit: all done...I went to the same screen and this is what it shows (pretty much the same settings):

Toggle Spoiler

File Attachments

1) [AfterReboot.jpg](#), downloaded 1520 times



Subject: Re: Computer fell off a cliff
Posted by [Caveman](#) on Thu, 29 Sep 2011 15:51:43 GMT
[View Forum Message](#) <> [Reply to Message](#)

Sorry I didnt see that you edited your post.

If you close that window down and go back to the main screen on the drop down menu there should be a button to display a graph. It will tell you what the specs are, temp fan speed and fan load can you get a SS of that for me please?

Subject: Re: Computer fell off a cliff

Posted by [Starbuzz](#) on Thu, 29 Sep 2011 17:31:16 GMT

[View Forum Message](#) <> [Reply to Message](#)

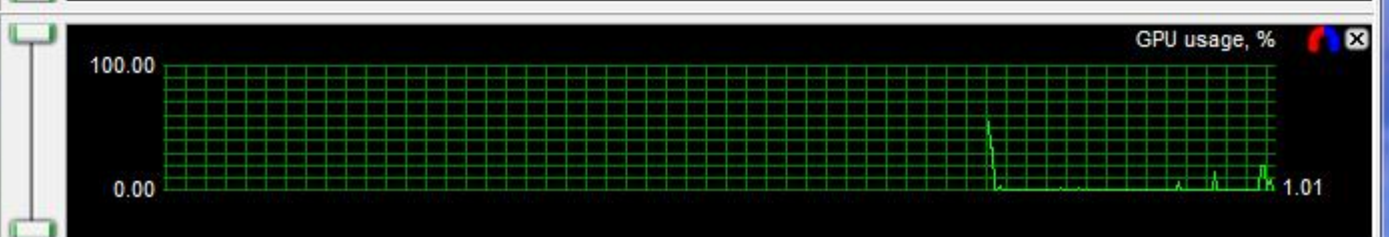
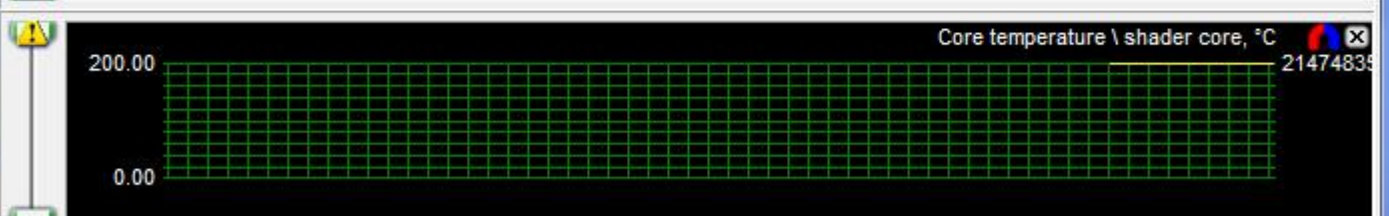
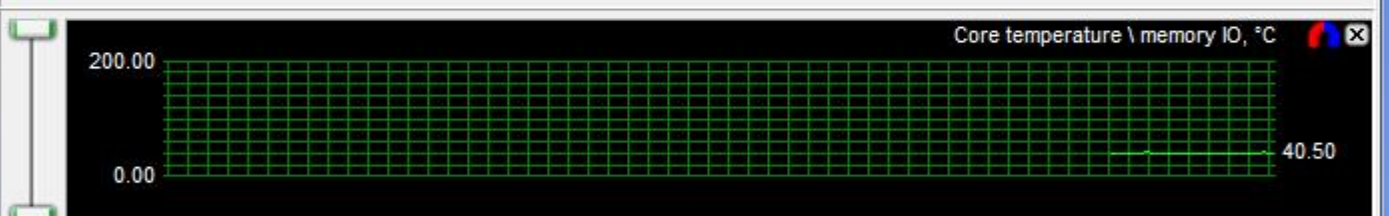
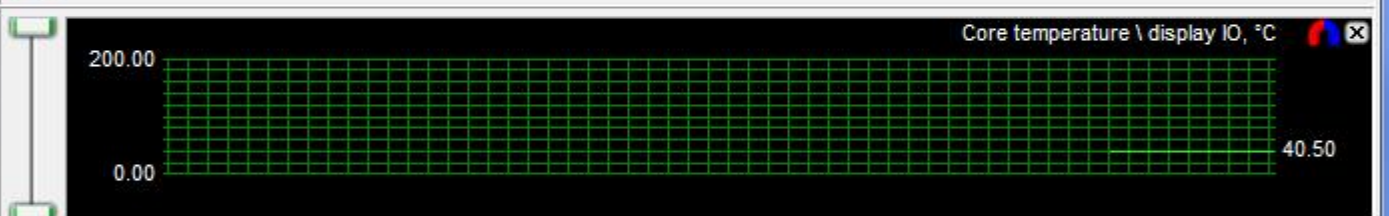
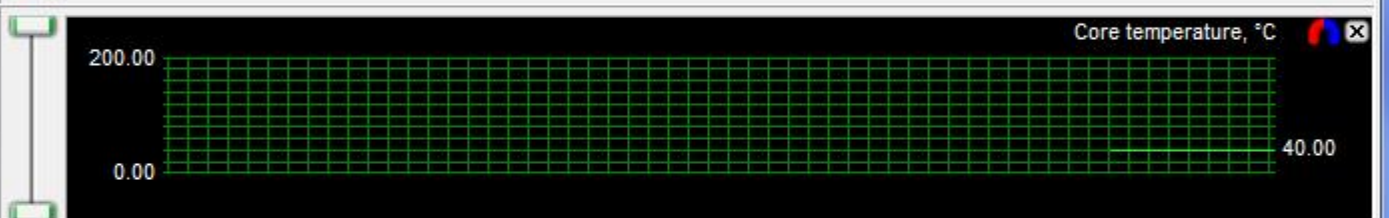
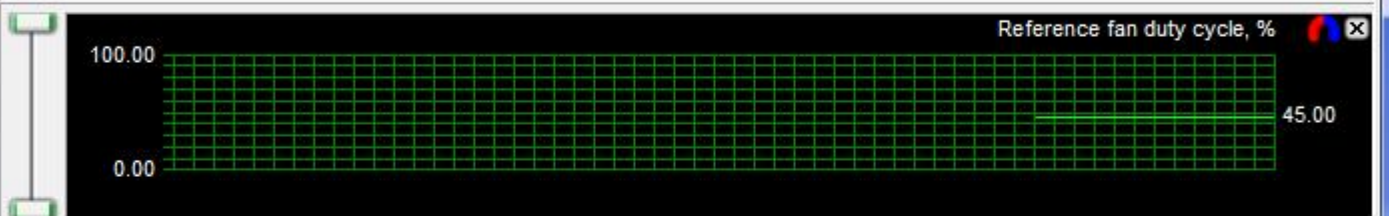
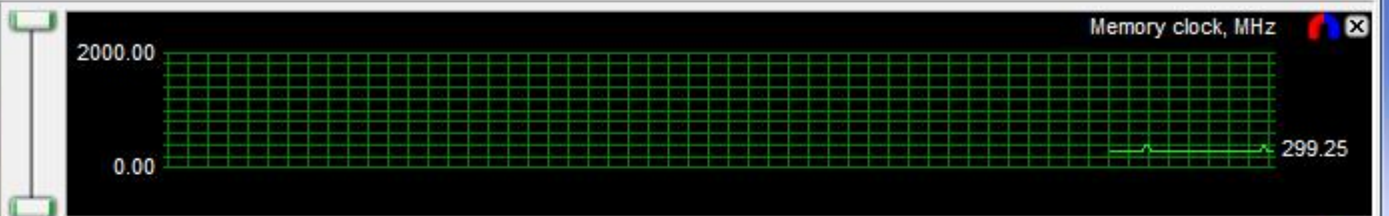
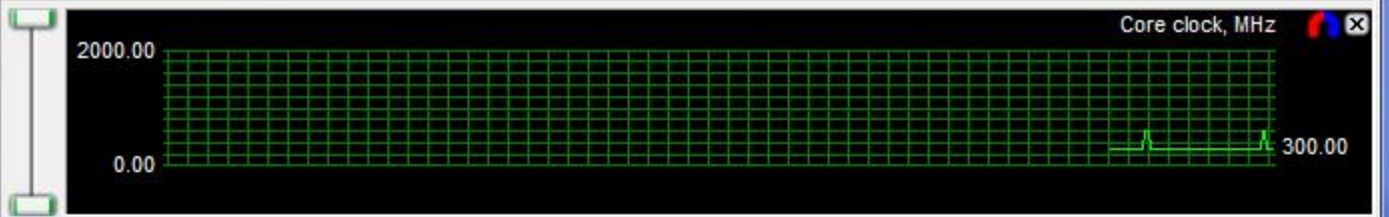
My fault for not making a new post...

So I found the option to display some graphs. There was 1 graph related to the fan:

Toggle Spoiler

File Attachments

1) [RivaGraphs.jpg](#), downloaded 1489 times



Subject: Re: Computer fell off a cliff
Posted by [Caveman](#) on Thu, 29 Sep 2011 17:39:14 GMT
[View Forum Message](#) <> [Reply to Message](#)

Hmm thats the screen I wanted. Everything looks ok except the GPU core temp/shader.. Its off the charts so it could be what Dan suggested. Your temp monitor is somewhat broke so the gpu thinks its at 200000000c and runs the fans on full all the time. You can change this in the window you was in before.. stick it at 60-75% and unless you're playing something like crysis or you start to get artefacts leave it at that... It will constantly run at 60% so it will be a bit louder but I think you've broke the temp monitor so you dont have many options.

Subject: Re: Computer fell off a cliff
Posted by [Starbuzz](#) on Thu, 29 Sep 2011 17:56:30 GMT
[View Forum Message](#) <> [Reply to Message](#)

oh noes that's right...I just see the core temp now! So that's why the fan's gone crazy. I will change the slider to around 60-75% as you suggested. So this is a problem with the card..hmm...will I be okay to do this from now on without causing any damage in the long term?

btw, I have 2 new cards lying around that somehow ended up with me. They are both NVIDIA 9400GT 1 GB. Is it a good idea to just dump this card and replace it?

Subject: Re: Computer fell off a cliff
Posted by [Caveman](#) on Thu, 29 Sep 2011 18:00:49 GMT
[View Forum Message](#) <> [Reply to Message](#)

If well if you have a SLI enabled board then yeah why not.. You can run both cards.

GFX cards only run at 75% max unless told otherwise anyways cos they sound like a rocket taking off. Running your fan at 60% wont cause you any harm except noise.

You might burn the fan out quicker but im sure they're built to last years on 100% anyways.

But yeah trying forcing it to run at 60% see if it helps..

Subject: Re: Computer fell off a cliff
Posted by [Starbuzz](#) on Thu, 29 Sep 2011 20:49:42 GMT
[View Forum Message](#) <> [Reply to Message](#)

I ran the fan @ 60% and I thought I can live with that. But out of curiosity I took out the new 9800GT and put it in. Sadly, I only have 1 PCIe slot so the damaged 4650 had to make way.

It's all quiet now as before...I was so used to having a very quiet computer and though I could have used to the noisy fans I prefer the silent.

Thanks so much for your help and advice on this, mate...I really appreciate it! My windows experience rating however went down from 5.3 to 5.0...I am going to give Rene and Oblivion a go now and see if they perform as before.

Subject: Re: Computer fell off a cliff
Posted by [Caveman](#) on Fri, 30 Sep 2011 03:43:36 GMT
[View Forum Message](#) <> [Reply to Message](#)

Well using that card won't hinder your ren experience however I don't think it will run oblivion on ultra settings, I don't think the 4650 could either.

You shouldn't notice too much of a frame drop.

You're welcome.

Subject: Re: Computer fell off a cliff
Posted by [Starbuzz](#) on Fri, 30 Sep 2011 15:46:46 GMT
[View Forum Message](#) <> [Reply to Message](#)

True, Renegade works great as before. I had never run Oblivion on highest on the 4650 as it couldn't handle it but just enough to keep my eyes happy. I have to fine tune the settings again as this card seems to struggle with fps drops where the other card had no problem. meh

Subject: Re: Computer fell off a cliff
Posted by [Caveman](#) on Fri, 30 Sep 2011 17:08:38 GMT
[View Forum Message](#) <> [Reply to Message](#)

You should be able to run it on high settings however turn off AA or use 2xAA anything more and it will beat your card into the ground.

When I had my 9800GTX+ I had everything on high but I was forced to turn off AA as that really impacted frame rate.

Subject: Re: Computer fell off a cliff
Posted by [Starbuzz](#) on Sat, 01 Oct 2011 02:10:01 GMT
[View Forum Message](#) <> [Reply to Message](#)

Glad I found out the previous settings I used for Oblivion! Runs fine now

And yes, I never run AA and no VSync either; it cripples the card. I use bloom though.
