

---

Subject: W3D

Posted by [The Party](#) on Wed, 22 Apr 2009 17:09:01 GMT

[View Forum Message](#) <> [Reply to Message](#)

---

How do I install the W3D importer, into RenX?

---

---

Subject: Re: W3D

Posted by [Scrin](#) on Wed, 22 Apr 2009 17:10:44 GMT

[View Forum Message](#) <> [Reply to Message](#)

---

MasterEvolution wrote on Wed, 22 April 2009 12:09How do I install the W3D importer, into RenX?  
5 stars for the win

---

---

Subject: Re: W3D

Posted by [ErroR](#) on Wed, 22 Apr 2009 19:41:07 GMT

[View Forum Message](#) <> [Reply to Message](#)

---

it is already there

---

---

Subject: Re: W3D

Posted by [The Party](#) on Wed, 22 Apr 2009 19:45:21 GMT

[View Forum Message](#) <> [Reply to Message](#)

---

I cant get it to work though, I put it in the folder and it does not work.

---

---

Subject: Re: W3D

Posted by [ErroR](#) on Wed, 22 Apr 2009 19:52:38 GMT

[View Forum Message](#) <> [Reply to Message](#)

---

to import you must go hammer icon > max script > in the drop down me select w3d import  
export>scroll down and select import to export use File > Export

---

---

Subject: Re: W3D

Posted by [R315r4z0r](#) on Wed, 22 Apr 2009 19:55:18 GMT

[View Forum Message](#) <> [Reply to Message](#)

---

No it isn't already there..

Download it here. Read the Readme that's included and it will tell you how to install it:  
<http://ren.game-maps.net/index.php?act=view&id=1002>

---

ErroR wrote on Wed, 22 April 2009 15:52to import you must go hammer icon > max script > in the drop down me select w3d import export>scroll down and select import to export use File > Export

You have to first install it into your gamepack directory before you can do that..

---

---

Subject: Re: W3D

Posted by [The Party](#) on Wed, 22 Apr 2009 20:28:38 GMT

[View Forum Message](#) <> [Reply to Message](#)

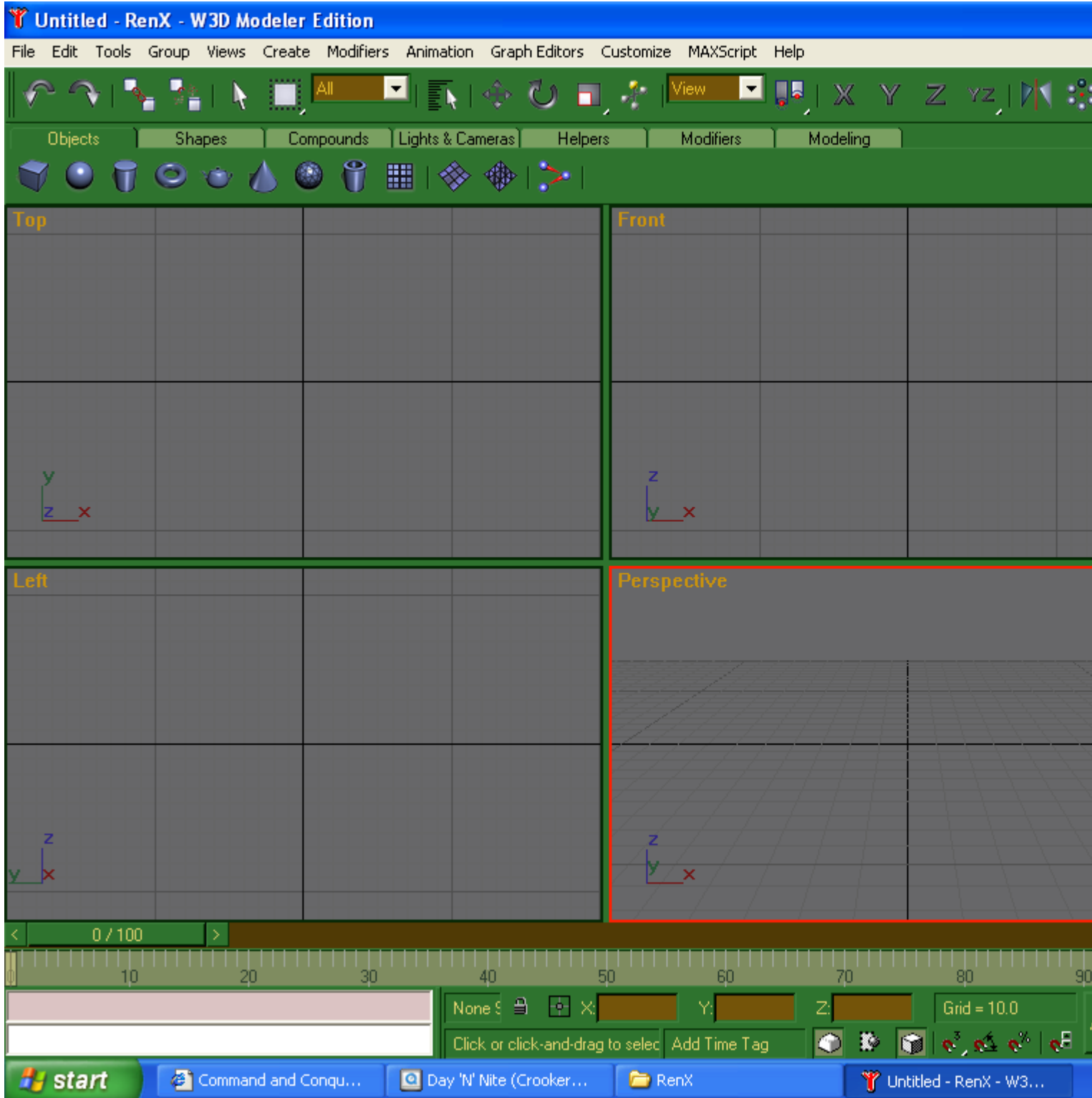
---

Okay I installed it and it says w3d modelar edition at the top but nothing has changed at all I still can't get it to work.

### File Attachments

---

1) [w3dhelp.PNG](#), downloaded 231 times



---

Subject: Re: W3D

Posted by [R315r4z0r](#) on Wed, 22 Apr 2009 20:38:54 GMT

[View Forum Message](#) <> [Reply to Message](#)

---

You have to set it up.

Right click on an open spot in the top toolbar and go to customize. Scroll down to "Import a W3D file" and click and drag it anywhere on the toolbar. It is an invisible icon, but when you click on it, you can import W3Ds.

---

---

Subject: Re: W3D  
Posted by [The Party](#) on Wed, 22 Apr 2009 20:45:10 GMT  
[View Forum Message](#) <> [Reply to Message](#)

---

Thanks, why is it invisible, isent there button icons for it?

---

---

Subject: Re: W3D  
Posted by [R315r4z0r](#) on Wed, 22 Apr 2009 20:46:03 GMT  
[View Forum Message](#) <> [Reply to Message](#)

---

If there is, I don't know about it. It isn't that bad though, just remember where you put it and you will be able to find it fine.

---

---

Subject: Re: W3D  
Posted by [The Party](#) on Wed, 22 Apr 2009 21:56:27 GMT  
[View Forum Message](#) <> [Reply to Message](#)

---

I say that because ---> E:\gmax\gamepacks\Westwood\RenX\ui\icons

These are supposed to be the icons.

#### File Attachments

---

- 1) [gmax\\_24i.bmp](#), downloaded 164 times
  - 2) [gmax\\_24a.bmp](#), downloaded 173 times
- 

---

Subject: Re: W3D  
Posted by [R315r4z0r](#) on Wed, 22 Apr 2009 22:44:16 GMT  
[View Forum Message](#) <> [Reply to Message](#)

---

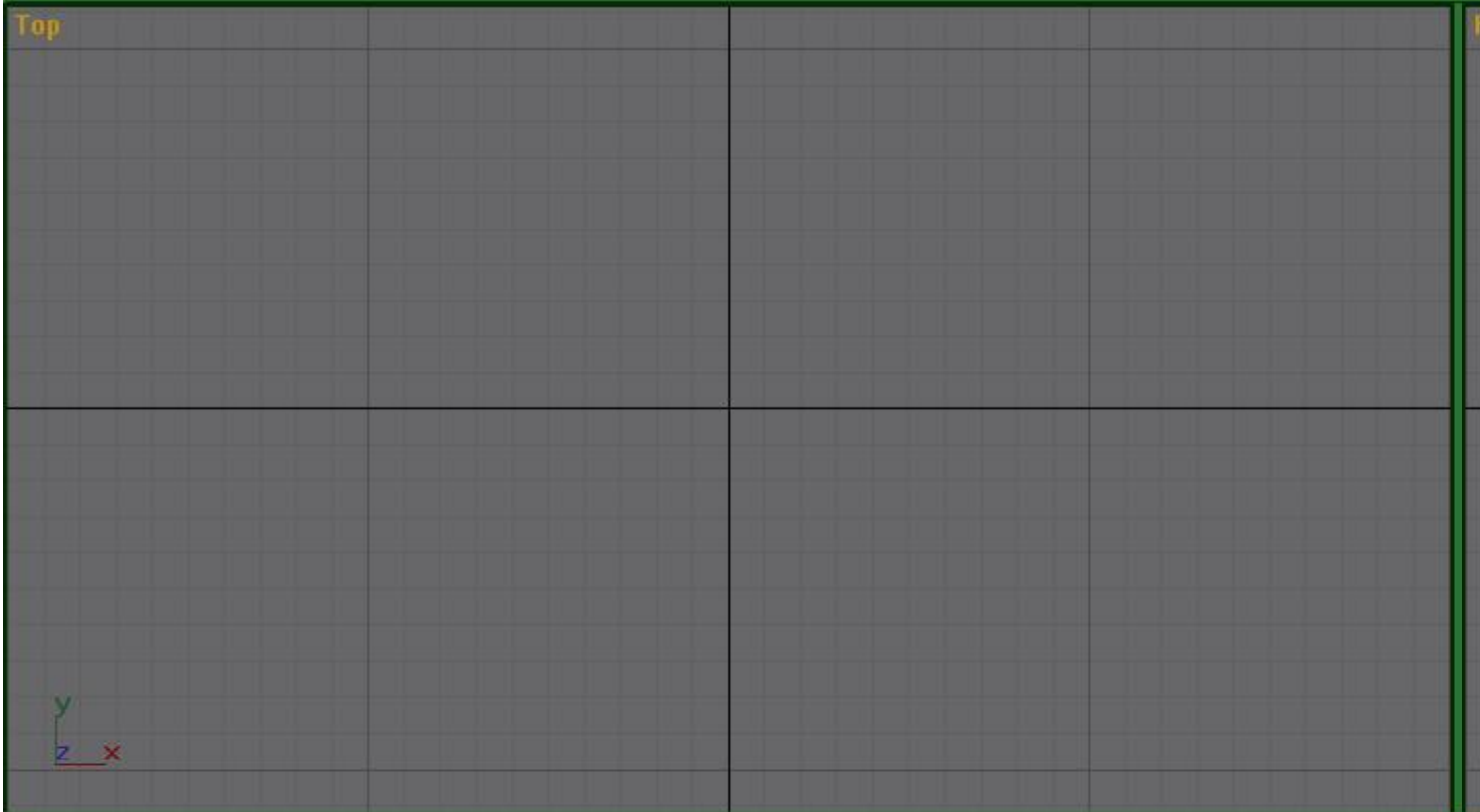
Well, I tried to edit the button's icon, but it wont work. Every time I apply a new image or make a text label, it just shows up invisible.

Anyway, this is how it looks for me:

#### File Attachments

---

1) [W3Dimp.JPG](#), downloaded 225 times



Subject: Re: W3D

Posted by [ErroR](#) on Thu, 23 Apr 2009 07:59:11 GMT

[View Forum Message](#) <> [Reply to Message](#)

---

R315r4z0r wrote on Wed, 22 April 2009 22:55No it isn't already there..

Download it here. Read the Readme that's included and it will tell you how to install it:

<http://ren.game-maps.net/index.php?act=view&id=1002>

ErroR wrote on Wed, 22 April 2009 15:52to import you must go hammer icon > max script > in the drop down me select w3d import export>scroll down and select import to export use File > Export

You have to first install it into your gamepack directory before you can do that..

if ti's not there then westwood really failed...

---