

---

Subject: Westwood Online not working  
Posted by [Mister\\_Turdles](#) on Fri, 17 Apr 2009 19:55:04 GMT  
[View Forum Message](#) <> [Reply to Message](#)

---

I'm on Windows Vista and using the 10th anniversary version, here is the message that pops up upon clicking on Westwood Online:

Westwood Online Error

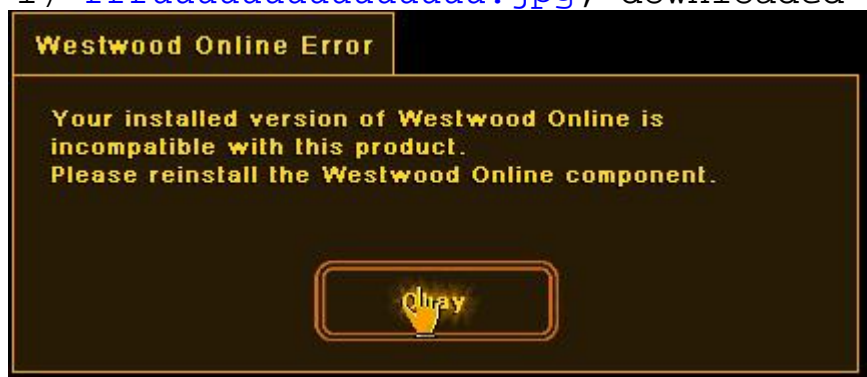
Your installed version of Westwood Online is incompatible with this product.  
Please reinstall the Westwood Online component.

Please help I'd really like to play this game, do I simply have to reinstall or?

#### File Attachments

---

1) [ffuuuuuuuuuuuuuuuuuuuuu.jpg](#), downloaded 678 times



---

Subject: Re: Westwood Online not working  
Posted by [Pyr0man1c](#) on Fri, 17 Apr 2009 20:26:07 GMT  
[View Forum Message](#) <> [Reply to Message](#)

---

Just reinstall WOL. And also do you have the latest update?(1.37)

---

Subject: Re: Westwood Online not working  
Posted by [Mister\\_Turdles](#) on Fri, 17 Apr 2009 20:56:31 GMT  
[View Forum Message](#) <> [Reply to Message](#)

---

But how do I reinstall WO?

---

Subject: Re: Westwood Online not working  
Posted by [Pyr0man1c](#) on Fri, 17 Apr 2009 21:32:26 GMT

---

[View Forum Message](#) <> [Reply to Message](#)

---

<http://ren.game-maps.net/index.php?act=category&id=79>  
Download the 1.037 update.

---

---

Subject: Re: Westwood Online not working  
Posted by [Mister\\_Turdles](#) on Fri, 17 Apr 2009 21:36:07 GMT  
[View Forum Message](#) <> [Reply to Message](#)

---

i have 1.037 i already checked

---

---

Subject: Re: Westwood Online not working  
Posted by [Goztow](#) on Sat, 18 Apr 2009 08:33:57 GMT  
[View Forum Message](#) <> [Reply to Message](#)

---

Please check the FAQ sticky.

---

---

Subject: Re: Westwood Online not working  
Posted by [\\_SSnipe\\_](#) on Wed, 22 Apr 2009 04:12:29 GMT  
[View Forum Message](#) <> [Reply to Message](#)

---

Install the "a path beyond" fds and only install WOL components

---

---

Subject: Re: Westwood Online not working  
Posted by [Pyr0man1c](#) on Wed, 22 Apr 2009 16:28:30 GMT  
[View Forum Message](#) <> [Reply to Message](#)

---

SSnipe wrote on Tue, 21 April 2009 23:12 Install the "a path beyond" fds and only install WOL components  
Lol there are more and easier ways to install it, he has probably already got it, and you can get it by installing the renegade FDS aswell

---

---

Subject: Re: Westwood Online not working  
Posted by [Lone0001](#) on Wed, 22 Apr 2009 21:42:44 GMT  
[View Forum Message](#) <> [Reply to Message](#)

---

No, can't get it from the Renegade FDS, see for yourself.

---

---

Subject: Re: Westwood Online not working

---

Posted by [\\_SSnipe\\_](#) on Thu, 23 Apr 2009 02:51:23 GMT

[View Forum Message](#) <> [Reply to Message](#)

---

Lone0001 wrote on Wed, 22 April 2009 14:42No, can't get it from the Renegade FDS, see for yourself.

Try the APB

---

---

Subject: Re: Westwood Online not working

Posted by [Pyr0man1c](#) on Thu, 23 Apr 2009 17:41:49 GMT

[View Forum Message](#) <> [Reply to Message](#)

---

Pyr0man1c wrote on Wed, 22 April 2009 11:28SSnipe wrote on Tue, 21 April 2009 23:12Install the "a path beyond" fds and only install WOL components

Lol there are more and easier ways to install it, he has probably already got it, and you can get it by installing the renegade FDS aswell

I uninstalled mine by accident, and I got Renegade working properly by downloading the Westwood Online from the Renegade FDS setup...

EDIT:Nvm stop going off topic it is probably working for him now...

---