

---

Subject: Renegade Setup Help

Posted by [The Party](#) on Mon, 09 Mar 2009 22:23:55 GMT

[View Forum Message](#) <> [Reply to Message](#)

---

Can you guys help me, when I try to run the setup I get "the sorry had to close error" what can I do to fix this or what is wrong here?

I have a 2.0 ghz celeron dual core processor

512 DDR2 ram

256 MB Nvidia GeForce 7050/Nvidia nForce 610i

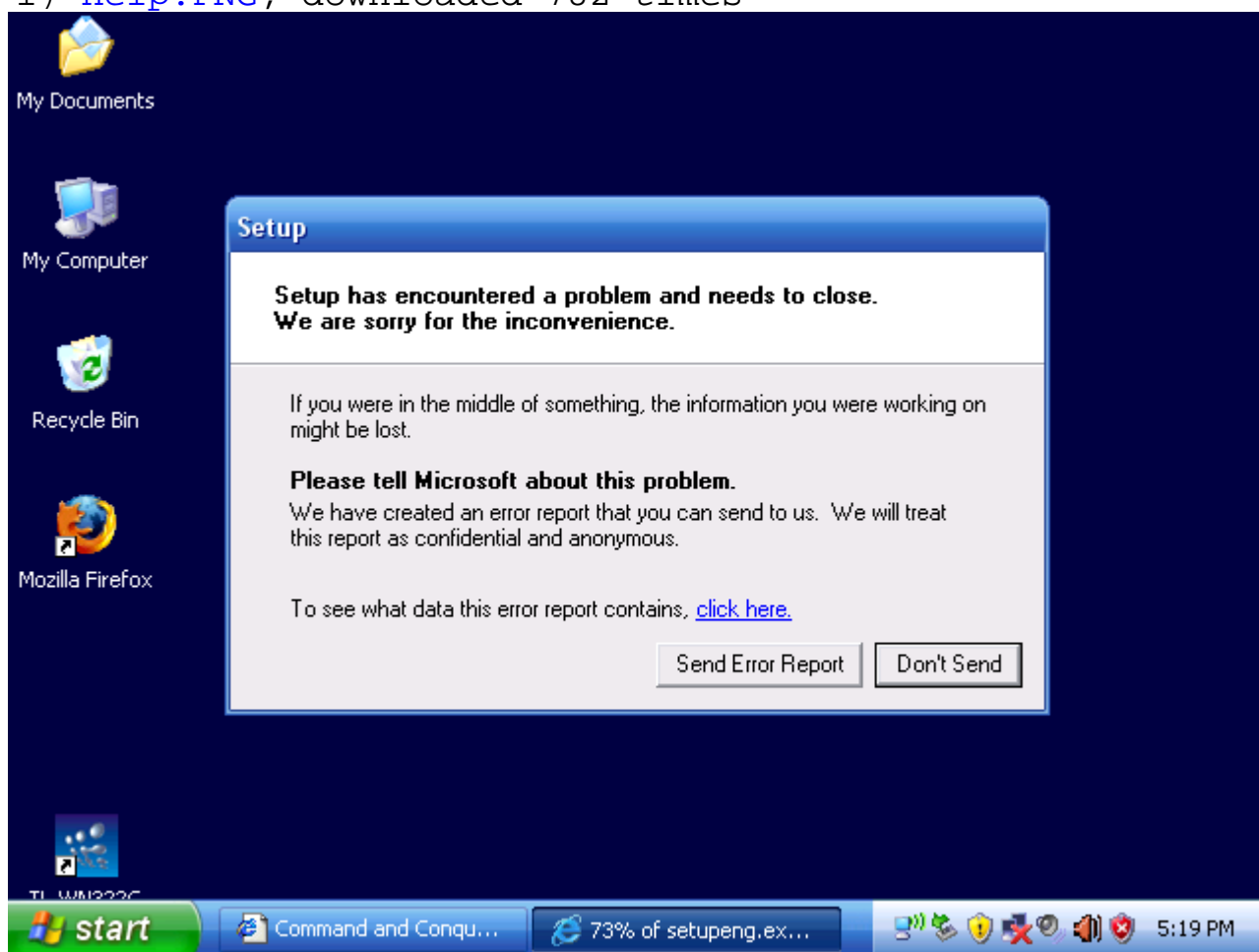
MSI 456PGNL motherboard 1333 FSB

So what is the problem here?

---

### File Attachments

1) [help.PNG](#), downloaded 782 times



---

Subject: Re: Renegade Setup Help

Posted by [renalpha](#) on Mon, 09 Mar 2009 23:14:12 GMT

[View Forum Message](#) <> [Reply to Message](#)

---

had it a few times.

formatting ma pc was the solution.

sorry pall

---

---

Subject: Re: Renegade Setup Help

Posted by [IronWarrior](#) on Tue, 10 Mar 2009 03:33:26 GMT

[View Forum Message](#) <> [Reply to Message](#)

---

renalpha wrote on Mon, 09 March 2009 17:14had it a few times.

formatting ma pc was the solution.

sorry pall

Same.

---

---

Subject: Re: Renegade Setup Help

Posted by [The Party](#) on Tue, 10 Mar 2009 05:27:31 GMT

[View Forum Message](#) <> [Reply to Message](#)

---

I reformed but I am still getting the same problem, what next? I get this:

EventType : InPageError    P1 : c0000010    P2 : 00000005

---

---

Subject: Re: Renegade Setup Help

Posted by [The Party](#) on Tue, 10 Mar 2009 08:09:11 GMT

[View Forum Message](#) <> [Reply to Message](#)

---

Well I downloaded disk 1 from the dme website and it works and installs find, must be my cd drive it is pretty old like a 4x cd-r.

---

---

Subject: Re: Renegade Setup Help

Posted by [The Party](#) on Wed, 11 Mar 2009 22:36:06 GMT

[View Forum Message](#) <> [Reply to Message](#)

---

Turns out it was my drive I bought a new DVD-ROM drive today and I popped the disk in and it works great. Lol the other drive had a 'Busy' light on it.

---