

---

Subject: Need help.

Posted by [HeavyX101- Left](#) on Tue, 15 Jul 2008 19:06:11 GMT

[View Forum Message](#) <> [Reply to Message](#)

---

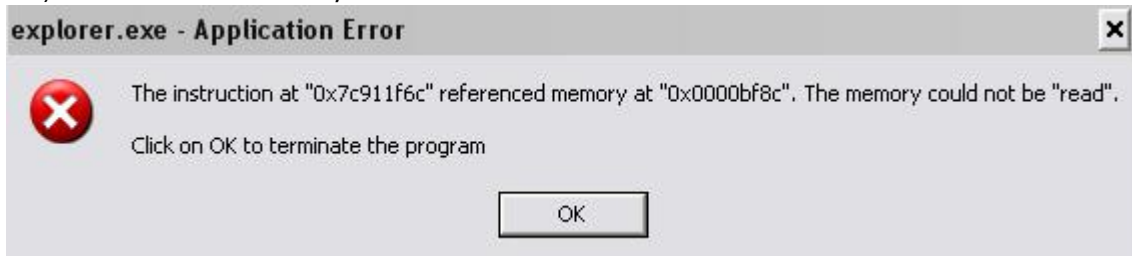
I'm sorry for posting here, but i'm having soem problems with my explorer.exe .  
When i right click some files, i get an error and my explorer.exe crashes. It is really annoying.

This is the error

---

## File Attachments

1) [errorrr.JPG](#), downloaded 217 times



---

Subject: Re: Need help.

Posted by [JoeBro](#) on Tue, 15 Jul 2008 19:44:44 GMT

[View Forum Message](#) <> [Reply to Message](#)

---

HeavyX101 wrote on Tue, 15 July 2008 14:06 I'm sorry for posting here, but i'm having some  
problems with my explorer.exe .  
When i right click some files, i get an error and my explorer.exe crashes. It is really annoying.

This is the error

I've never had that happen to me before, but you could try going to computer's Help section on the  
start menu. If you still haven't found out how, call customer support.

---

---

Subject: Re: Need help.

Posted by [cheesesoda](#) on Tue, 15 Jul 2008 19:46:57 GMT

[View Forum Message](#) <> [Reply to Message](#)

---

HeavyX101 wrote on Tue, 15 July 2008 15:06 I'm sorry for posting here, but i'm having soem  
problems with my explorer.exe .  
When i right click some files, i get an error and my explorer.exe crashes. It is really annoying.

This is the error

You know, whenever I've had problems similar to that, I've always loaded up Firefox, typed the error message into a Google search, and browsed the results for a fix. Guess what? I usually don't turn up empty handed. You could, I don't know, try doing that once in a while.

---

---

Subject: Re: Need help.

Posted by [HeavyX101- Left](#) on Tue, 15 Jul 2008 20:14:50 GMT

[View Forum Message](#) <> [Reply to Message](#)

---

cheesesoda wrote on Tue, 15 July 2008 15:46HeavyX101 wrote on Tue, 15 July 2008 15:06I'm sorry for posting here, but i'm having soem problems with my explorer.exe .  
When i right click some files, i get an error and my explorer.exe crashes. It is really annoying.

This is the error

You know, whenever I've had problems similar to that, I've always loaded up Firefox, typed the error message into a Google search, and browsed the results for a fix. Guess what? I usually don't turn up empty handed. You could, I don't know, try doing that once in a while.

Ok, i'm currently doing that. Thanks for help

---

---

Subject: Re: Need help.

Posted by [HeavyX101- Left](#) on Tue, 15 Jul 2008 20:56:17 GMT

[View Forum Message](#) <> [Reply to Message](#)

---

Nope, i couldnt find anything that could of help. i think i should do a restoration.

---

---

Subject: Re: Need help.

Posted by [HeavyX101- Left](#) on Tue, 15 Jul 2008 21:40:16 GMT

[View Forum Message](#) <> [Reply to Message](#)

---

Nope, didnt help eather, please, if someone knows how to fix it , can you help me

---

---

Subject: Re: Need help.

Posted by [saberhawk](#) on Tue, 15 Jul 2008 21:50:04 GMT

[View Forum Message](#) <> [Reply to Message](#)

---

HeavyX101 wrote on Tue, 15 July 2008 16:40Nope, didnt help eather, please, if someone knows how to fix it , can you help me

Shell extension gone wrong. Find ShellExView and disable any shell extensions that are non-Microsoft, make sure the problem is gone, and then enable them again one by one.

---

---

Subject: Re: Need help.

Posted by [HeavyX101- Left](#) on Tue, 15 Jul 2008 21:52:56 GMT

[View Forum Message](#) <> [Reply to Message](#)

---

Sorry, but where do i find them? And how should i find out if it is non-microsoft?

---

Subject: Re: Need help.

Posted by [saberhawk](#) on Tue, 15 Jul 2008 21:55:01 GMT

[View Forum Message](#) <> [Reply to Message](#)

---

Google

---

Subject: Re: Need help.

Posted by [HeavyX101- Left](#) on Tue, 15 Jul 2008 21:58:48 GMT

[View Forum Message](#) <> [Reply to Message](#)

---

Ok, i just downloaded ShellExView, so on the "Product name" thing, there is like Microsot(c) Windows(c) Operating System, and there are other ones, should i disable the ones that dont have Microsoft as their Product Name?

---

Subject: Re: Need help.

Posted by [HeavyX101- Left](#) on Tue, 15 Jul 2008 22:10:19 GMT

[View Forum Message](#) <> [Reply to Message](#)

---

Sorry for double post, but i found a tutorial on the internet. It same as the one you are talking about, i just want to make sure if it is the thing i should do:  
<http://redmondmag.com/columns/print.asp?EditorialsID=1116>

---

Subject: Re: Need help.

Posted by [HeavyX101- Left](#) on Tue, 15 Jul 2008 22:26:26 GMT

[View Forum Message](#) <> [Reply to Message](#)

---

Sorry for double post again,  
I have disabled some of the Context Menu stuff, but not all of them.

Here is the pic of all of the Context Menu items i have:

So, if i disable all of them, and then enable them one by one, will it harm anything on my comp?

### File Attachments

---

1) [soea.JPG](#), downloaded 116 times

---

Extension Name	Disabled	Type	Description	Version	Product Name
RealPlayer Download and Record Plugin for...	No	Browser Helper ...	RealPlayer Dow...	1.0.1.57	
Spybot-S&D IE Protection	No	Browser Helper ...	SBSD IE Protect...	1, 5, 0, 8	Spybot - Search & Destroy
Windows Live Sign-in Helper	No	Browser Helper ...	WindowsLiveLo...	4.200.520.1	Microsoft® Windows Live
Yahoo! IE Services Button	No	Browser Helper ...	Yahoo! IE Servi...	2007, 12, 12, 1	Yahoo! IE Services
	No	Column Handler	Windows Shell ...	6.00.2900.324...	Microsoft® Windows®
	No	Column Handler	Windows Shell ...	6.00.2900.324...	Microsoft® Windows®
	No	Column Handler	Windows Shell ...	6.00.2900.324...	Microsoft® Windows®
	No	Column Handler	Windows Shell ...	6.00.2900.324...	Microsoft® Windows®
AVG7 Shell Extension Class	No	Context Menu	AVG Shell Exten...	7.5.0.409	AVG 7.5 Anti-Virus System
CmdLineContextMenu Class	No	Context Menu	SecuROM conte...	1,1,224,0	
CryptPKO Class	No	Context Menu	Crypto Shell Ex...	5.131.2600.21...	Microsoft® Windows®
DesktopContext Class	No	Context Menu	NVIDIA Display ...	6.14.11.7519	NVIDIA Compatible Win...
Encryption Context Menu	No	Context Menu	Windows Shell ...	6.00.2900.324...	Microsoft® Windows®
Microsoft New Object Service	No	Context Menu	Windows Shell ...	6.00.2900.324...	Microsoft® Windows®
Microsoft SendTo Service	No	Context Menu	Windows Shell ...	6.00.2900.324...	Microsoft® Windows®
NVIDIA CPL Extension	No	Context Menu	NVIDIA Display ...	6.14.11.7519	NVIDIA Compatible Win...
nView Desktop Context Menu	No	Context Menu	NVIDIA Desкто...	6.14.10.11175	NVIDIA Desktop Explor...
Offline Files Menu	No	Context Menu	Client Side Cac...	5.1.2600.2180 ...	Microsoft® Windows®
Open With Context Menu Handler	No	Context Menu	Windows Shell ...	6.00.2900.324...	Microsoft® Windows®
RealOne Player Context Menu Class	Yes	Context Menu	RealPlayer Shell...	1.0.2.44	RealPlayer
Shell extensions for sharing	No	Context Menu	Shell extension...	5.1.2600.2180 ...	Microsoft® Windows®
Shell Image Verbs	No	Context Menu	Windows Pictur...	6.00.2900.218...	Microsoft® Windows®
WinRAR	Yes	Context Menu	WinRAR shell e...	3.80	WinRAR
WMP Add To Playlist Launcher	No	Context Menu	Windows Media...	9.00.00.3250	Microsoft(R) Windows M...
WMP Burn Audio CD Launcher	No	Context Menu	Windows Media...	9.00.00.3250	Microsoft(R) Windows M...
WMP Play As Playlist Launcher	No	Context Menu	Windows Media...	9.00.00.3250	Microsoft(R) Windows M...
Yahoo! Mail Shell Extension	Yes	Context Menu	Yahoo! Mail	2005, 1, 1, 12	Yahoo! Mail
CDF Extension Copy Hook	No	Copy Hook Han...	Shell Doc Objec...	6.00.2900.335...	Microsoft® windows®
MyDocs Copy Hook	No	Copy Hook Han...	My Documents ...	6.00.2900.218...	Microsoft® Windows®
Shell Copy Hook	No	Copy Hook Han...	Windows Shell ...	6.00.2900.324...	Microsoft® Windows®
Shell extensions for sharing	No	Copy Hook Han...	Shell extension...	5.1.2600.2180 ...	Microsoft® Windows®
Shell Scrap DataHandler	No	Data Handler	Shell scrap obje...	5.1.2600.2180 ...	Microsoft® Windows®
WinRAR	Yes	Drag & Drop Ha...	WinRAR shell e...	3.80	WinRAR
.exe drop target	No	Drop Handler	Windows Shell ...	6.00.2900.324...	Microsoft® Windows®
Compressed (zipped) Folder DropHandler	No	Drop Handler	Compressed (zi...	6.00.2900.218...	Microsoft® Windows®
Compressed (zipped) Folder SendTo Target	No	Drop Handler	Compressed (zi...	6.00.2900.218...	Microsoft® Windows®
MyDocs Drop Target	No	Drop Handler	My Documents ...	6.00.2900.218...	Microsoft® Windows®
Sendmail service	No	Drop Handler	Send Mail	6.00.2900.218...	Microsoft® Windows®
Sendmail service	No	Drop Handler	Send Mail	6.00.2900.218...	Microsoft® Windows®
Shell Extension For Windows Script Host	No	Drop Handler	Microsoft (r) Sh...	5.6.0.8820	Microsoft (r) Windows S...
Shortcut	No	Drop Handler	Windows Shell ...	6.00.2900.324...	Microsoft® Windows®
WinRAR	Yes	Drop Handler	WinRAR shell e...	3.80	WinRAR
&Tip of the Day	No	Explorer Bar	Shell Doc Objec...	6.00.2900.335...	Microsoft® Windows®
Favorites Band	No	Explorer Bar	Shell Doc Objec...	6.00.2900.335...	Microsoft® Windows®
History Band	No	Explorer Bar	Shell Doc Objec...	6.00.2900.335...	Microsoft® Windows®
Channel Handler Object	No	Icon Handler	Channel Definiti...	6.00.2900.335...	Microsoft® Windows®
CmdFileIcon	No	Icon Handler	Windows Shell ...	6.00.2900.324...	Microsoft® Windows®
ExtractIcon Class	No	Icon Handler	MMC Shell Exte...	5.1.2600.2180 ...	Microsoft® Windows®
Fonts	No	Icon Handler	Windows Font ...	5.1.2600.2180 ...	Microsoft® Windows®
HyperTerminal Icon Ext	No	Icon Handler	HyperTerminal ...	5.1.2600.0	Microsoft® Windows®

Subject: Re: Need help.

Posted by [HeavyX101- Left](#) on Tue, 15 Jul 2008 22:46:42 GMT

[View Forum Message](#) <> [Reply to Message](#)

---

Oh fuck, thanks Saberhawk I disabled every Context Menu and then enabled one at a time and tested, ok, the "CmdLineContextMenu Class" was the one that as crashing every thing, i disabled it and now my comp works fine. Thanks mite.

For moderators: Please delete this topic or Move it to spam.

---