

---

Subject: Trouble with core patch 2

Posted by [jollycakes](#) on Mon, 31 Mar 2008 17:49:54 GMT

[View Forum Message](#) <> [Reply to Message](#)

---

I've already done a search on the subject, seen the faq with the link to manually download. but of course, that didnt work for me either.

this may well be related to installing IE7 but tbh i dont think it is.

In order, i configured ASE, set it up to run right, and pressed renegade before i should have done. i managed to get into a game but had a dodgy connection and was eventually kicked before i realised i needed core patch 2

so i wait for it to work in renguard, just didnt work. Tried manual download, just didnt work.

so i'm asking whether its worth me posting up the error codes or whether i should just ask for an external link to the patch.

thanks for your time, anyone who bothers.

---

---

Subject: Re: Trouble with core patch 2

Posted by [Goztow](#) on Mon, 31 Mar 2008 18:51:47 GMT

[View Forum Message](#) <> [Reply to Message](#)

---

Yes, plz post error codes and a description, possibly with screenies, of what exactly happens. Also plz specify your renegade install order.

---

---

Subject: Re: Trouble with core patch 2

Posted by [jollycakes](#) on Mon, 31 Mar 2008 22:46:43 GMT

[View Forum Message](#) <> [Reply to Message](#)

---

is the error code.

I installed renguard, configured ASE to run "...game.exe"

tried to install core patch 2 but that happened after i tried twice in the same box.

if i didnt wait and pressed renegade i got into the game, but it was very laggy despite a ping of 20. I've played games of ET that skipped less at 70, and eventually was kicked for a dodgy connection.

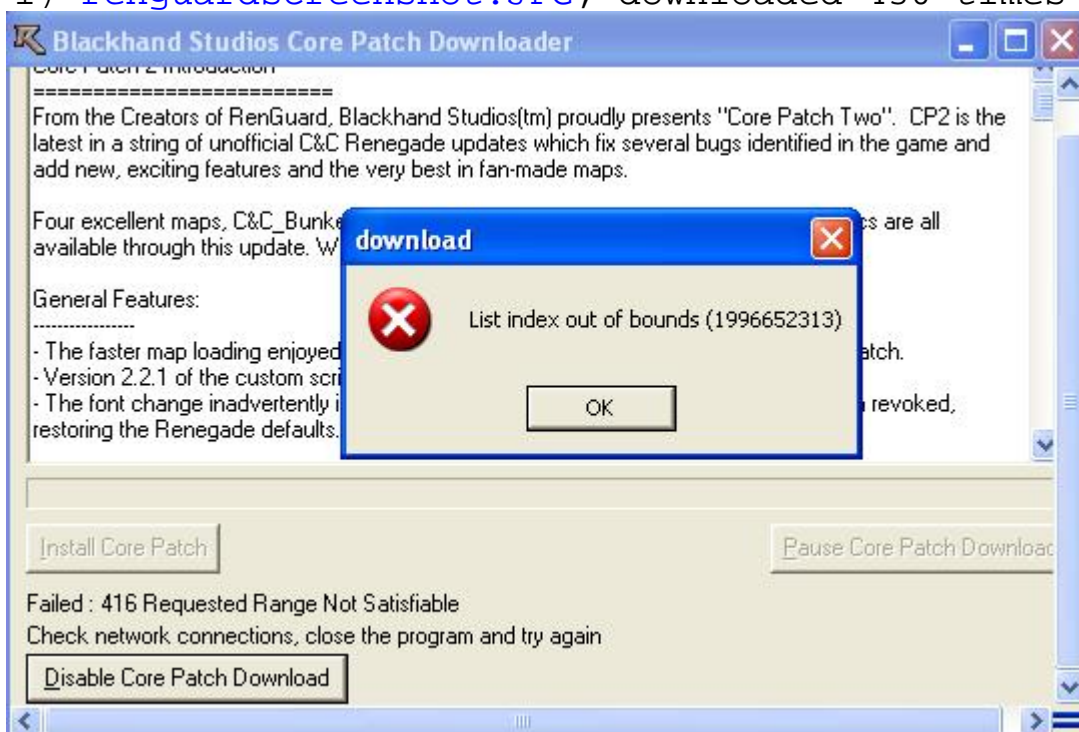
(i used to be in an ET clan so i know a little, tho not much about the internet

as of time of writing i've found a link to a manual download on this site but its just failed to work in the last 26 seconds.

i'm annoyed.

## File Attachments

1) [renguardscreenshot.JPG](#), downloaded 430 times



---

Subject: Re: Trouble with core patch 2  
Posted by [Lone0001](#) on Mon, 31 Mar 2008 23:28:30 GMT  
[View Forum Message](#) <> [Reply to Message](#)

If you are having problems playing it could possibly be your fps what is that usually?

---

Subject: Re: Trouble with core patch 2  
Posted by [jollycakes](#) on Tue, 01 Apr 2008 00:08:45 GMT  
[View Forum Message](#) <> [Reply to Message](#)

i'm sorry i havent learned enough of the console etc to figure that out yet.

maybe i should try turning the gfx settings down though since i dont have a 3d accelerator at the mo. the last one set on fire :massive effing cry:

wasnt spectacular, just a bit of rancid black smoke

---

---

Subject: Re: Trouble with core patch 2  
Posted by [jollycakes](#) on Tue, 01 Apr 2008 00:30:32 GMT  
[View Forum Message](#) <> [Reply to Message](#)

---

this is getting ridiculous. i've managed to get core patch 2 installed.

now i was kicked for having bandtest.dll in my directory.

i didnt put it there, i dont know what its for, and i'm pretty sure its part of the core 2 patching process.

is it safe to delete it?

---

---

Subject: Re: Trouble with core patch 2  
Posted by [Lone0001](#) on Tue, 01 Apr 2008 02:16:06 GMT  
[View Forum Message](#) <> [Reply to Message](#)

---

To get a view of your current fps(take note when you look at the display don't pay any attention to the sfps that should be 60-63 always and is based on the server's hardware) and ping etc, press F8 and type fps and press enter then a display should could up in the right upper corner a fps that does not lag a whole lot would be possibly 40-50, 30 at the least if it is lower than that you have a problem.

---

---

Subject: Re: Trouble with core patch 2  
Posted by [Goztow](#) on Tue, 01 Apr 2008 06:58:55 GMT  
[View Forum Message](#) <> [Reply to Message](#)

---

jollycakes wrote on Tue, 01 April 2008 02:30this is getting ridiculous. i've managed to get core patch 2 installed.

now i was kicked for having bandtest.dll in my directory.

i didnt put it there, i dont know what its for, and i'm pretty sure its part of the core 2 patching process.

is it safe to delete it?

We need to havet he exact error, otherwise there's nothing we can do.

Who/what kicked u for having bandtest.dll and when? Givet he exact error.

---

bandtest.dll is a necessary file for renegade, don't delete it.

If you give us enough info, we'll be able to solve this problem .

If you want this done the quick way, then try reinstalling as per this guide.

---

---

Subject: Re: Trouble with core patch 2

Posted by [jollycakes](#) on Tue, 01 Apr 2008 12:37:01 GMT

[View Forum Message](#) <> [Reply to Message](#)

---

thanks, but i got it solved. i was just too eager to play and didnt let renguard itself update. It was renguard that disconnected me so i'm assuming the server kicked me because of that.

now my problem is my connection rate, ASE tells me ping of 20 on a server, i go to play it and the server tells i'm getting nearly 300.

is my computer at fault or ASE? :confused:

will lowering my gfx quality help as i dont have a 3d accelerator card?

---

---

Subject: Re: Trouble with core patch 2

Posted by [Goztow](#) on Tue, 01 Apr 2008 15:01:51 GMT

[View Forum Message](#) <> [Reply to Message](#)

---

Read more about lag causes here

---

---

Subject: Re: Trouble with core patch 2

Posted by [jollycakes](#) on Tue, 01 Apr 2008 17:01:38 GMT

[View Forum Message](#) <> [Reply to Message](#)

---

ok i've done a speed test. i think its probably too slow to play

27kbps down

box was empty for up

i've a suspicion that a corrupted net limiter programme is ruining my internet, but because i havent played online so long i didnt notice.

damn you skype, never using it again. :@

---

---

Subject: Re: Trouble with core patch 2  
Posted by [jollycakes](#) on Tue, 01 Apr 2008 17:40:58 GMT  
[View Forum Message](#) <> [Reply to Message](#)

---

ffs. got rid of net limiter and its still at 20 kbps.

does this mean i should basically give up til i get a better internet connection? surely even 56k players dont have it this bad.

---

---

Subject: Re: Trouble with core patch 2  
Posted by [Goztow](#) on Tue, 01 Apr 2008 17:49:12 GMT  
[View Forum Message](#) <> [Reply to Message](#)

---

jollycakes wrote on Tue, 01 April 2008 19:40ffs. got rid of net limiter and its still at 20 kbps.

does this mean i should basically give up til i get a better internet connection? surely even 56k players dont have it this bad.  
Call your ISP. This is all but normal.

---

---

Subject: Re: Trouble with core patch 2  
Posted by [Lone0001](#) on Tue, 01 Apr 2008 21:17:59 GMT  
[View Forum Message](#) <> [Reply to Message](#)

---

Yea if you are only getting 20KB your ISP is ripping you off.

---