

---

Subject: .INI Configuration format?

Posted by [bat66wat6](#) on Sun, 17 Feb 2008 23:26:29 GMT

[View Forum Message](#) <> [Reply to Message](#)

---

In order for some things I need I have to use a .configuration format INI file.  
Unfortunately I can't create these .config files by simply saving a Text Document in the format or renaming the text document to BlaBla.config or BlaBla.configuration.

Can someone please tell me how I create a configuration file?

Thanks...

---

---

Subject: Re: .INI Configuration format?

Posted by [jnz](#) on Sun, 17 Feb 2008 23:37:00 GMT

[View Forum Message](#) <> [Reply to Message](#)

---

[section]

key = data  
key2 = data

[section2]

key = data  
key2 = data

Not hard tbh

---

---

Subject: Re: .INI Configuration format?

Posted by [mr£ÄŞÄ-z](#) on Sun, 17 Feb 2008 23:43:25 GMT

[View Forum Message](#) <> [Reply to Message](#)

---

RoShamBo wrote on Sun, 17 February 2008 17:37

[section]

key = data  
key2 = data

[section2]

key = data

---

key2 = data

Not hard tbh

lol what does this do?

---

---

Subject: Re: .INI Configuration format?

Posted by [Dave Anderson](#) on Sun, 17 Feb 2008 23:56:02 GMT

[View Forum Message](#) <> [Reply to Message](#)

---

An INI file simply stores configuration information. Sections are used to categorize your keys, and the keys simply provide a unique name for that "setting". Here's an example:

```
[Appearance]
BackgroundColor=Blue
ForegroundColor=White
```

```
[Behavior]
Cache=True
```

Roshambo's example is just as easy to follow though..

---

---

Subject: Re: .INI Configuration format?

Posted by [Zion](#) on Mon, 18 Feb 2008 01:06:11 GMT

[View Forum Message](#) <> [Reply to Message](#)

---

Not sure about either of you but isn't he asking for the file extension?

When you come to save the file, encapsulate the file name in quotation marks.

Example:

```
"config.cfg"
"settings.ini"
```

So-on and so-forth.

---

---

Subject: Re: .INI Configuration format?

Posted by [bat66wat6](#) on Mon, 18 Feb 2008 03:29:07 GMT

[View Forum Message](#) <> [Reply to Message](#)

---

No.

I aint on about C++. Your precious little C++ programme is bitchin me about, I can't even get all the stuff the dude wants me to. That SDK thing is having problems...

Takes 20 mins to get 3/4 download then freezes!

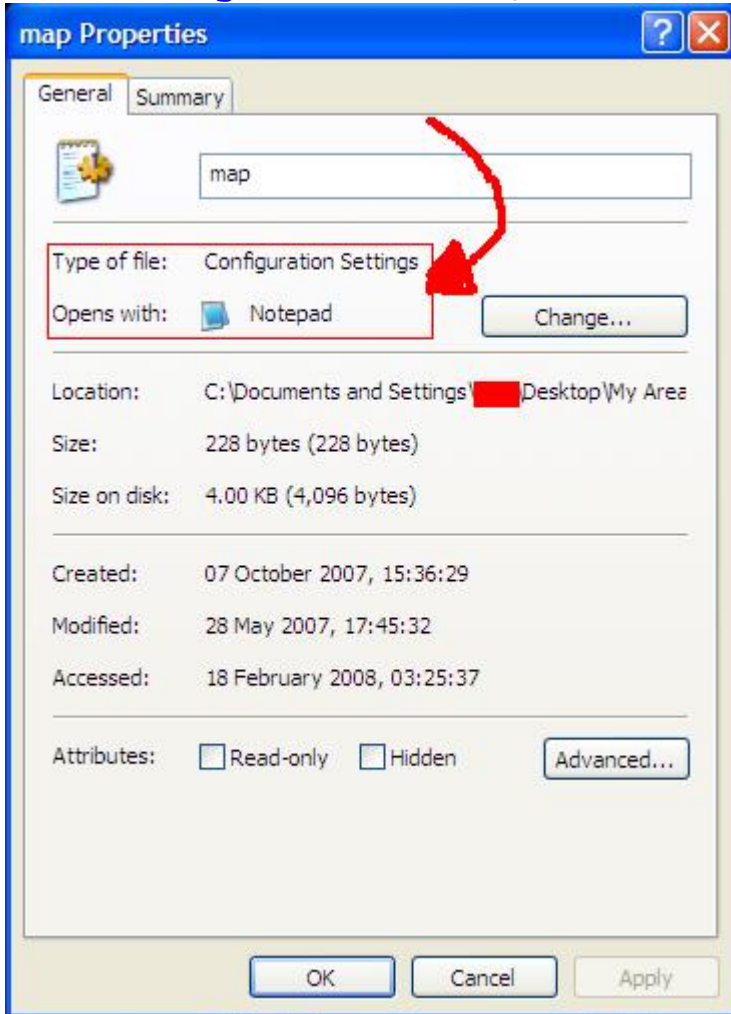
Besides, I was on about this to be more exact!

The type of Configuration Settings file that opens with Notepad!

SS explains even further if needed!

## File Attachments

1) [.config file SS.JPG](#), downloaded 63 times



---

Subject: Re: .INI Configuration format?

Posted by [jnz](#) on Mon, 18 Feb 2008 03:39:25 GMT

[View Forum Message](#) <> [Reply to Message](#)

---

bat66wat6 wrote on Mon, 18 February 2008 03:29No.

I aint on about C++. Your precious little C++ programme is bitchin me about, I can't even get all the stuff the dude wants me to. That SDK thing is having problems...  
Takes 20 mins to get 3/4 download then freezes!

Besides, I was on about this to be more exact!

The type of Configuration Settings file that opens with Notepad!  
SS explains even further if needed!

Read mine and Dave's post.

---

---

Subject: Re: .INI Configuration format?

Posted by [bat66wat6](#) on Mon, 18 Feb 2008 03:44:10 GMT

[View Forum Message](#) <> [Reply to Message](#)

---

I think that you have done a bit to much coding RoShamBo. You seem to speak almost in 0010100's to me sometimes...

Key=1

Key=0

What the hell is that sort of stuff gonna do for me?  
All I need to know from this query is how the hell when I open up Notepad(or .txt file) I can save it in Configuration Settings format???? So it's properties are like that of the above SS in previous post???

---

---

Subject: Re: .INI Configuration format?

Posted by [Ethenal](#) on Mon, 18 Feb 2008 04:37:00 GMT

[View Forum Message](#) <> [Reply to Message](#)

---

bat66wat6, you are so fucking stupid it makes me want to club a baby seal.

Zion Fox already told you how to save a file in the INI format. When you are saving the file, type the name in quotes. EX: "config.ini"

---

---

Subject: Re: .INI Configuration format?

Posted by [bat66wat6](#) on Mon, 18 Feb 2008 04:56:52 GMT

[View Forum Message](#) <> [Reply to Message](#)

---

KK, I got what I needed. Thanks guys.

Case closed. Please, lock topic...

---