

---

Subject: Bizarre LE (LevelEDIT) crash

Posted by [bat66wat6](#) on Mon, 22 Oct 2007 18:54:58 GMT

[View Forum Message](#) <> [Reply to Message](#)

---

I attempt to load a cnc\_gdi\_orca and it crashes, i mean im totally like wtf is wrong?!

+It crashes even when i make a spawner of a gdi orca!

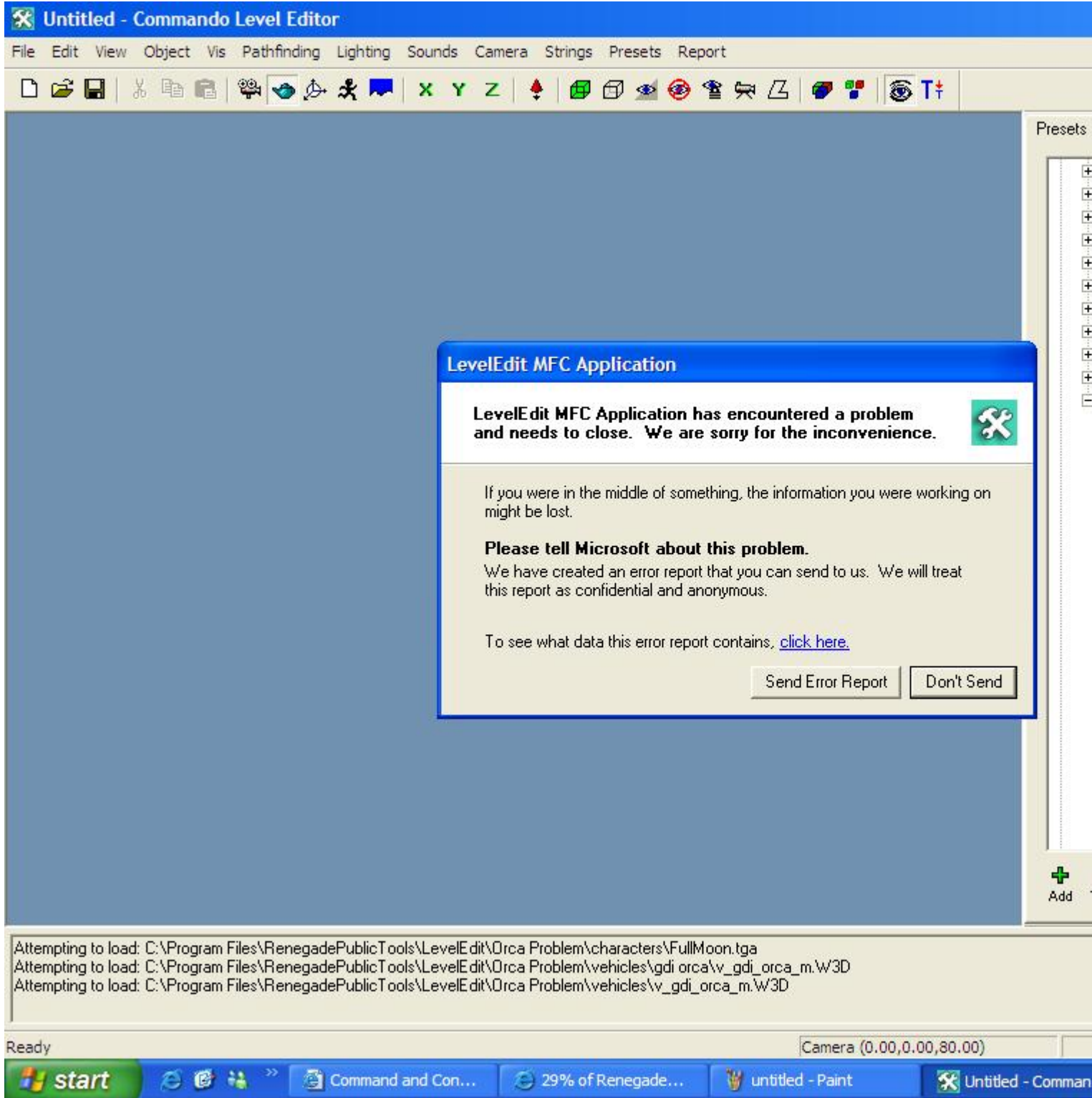
It started to do it 2 me on my first installation of LE about 3-6 months ago! Ever since then it will not let me load a cnc\_gdi\_orca without crashing!

SS Below if ya wanna take a peek, please help me with this, im totally puzzled as to why it does this to me....

### File Attachments

---

1) [Orca Loading Problem.JPG](#), downloaded 70 times



---

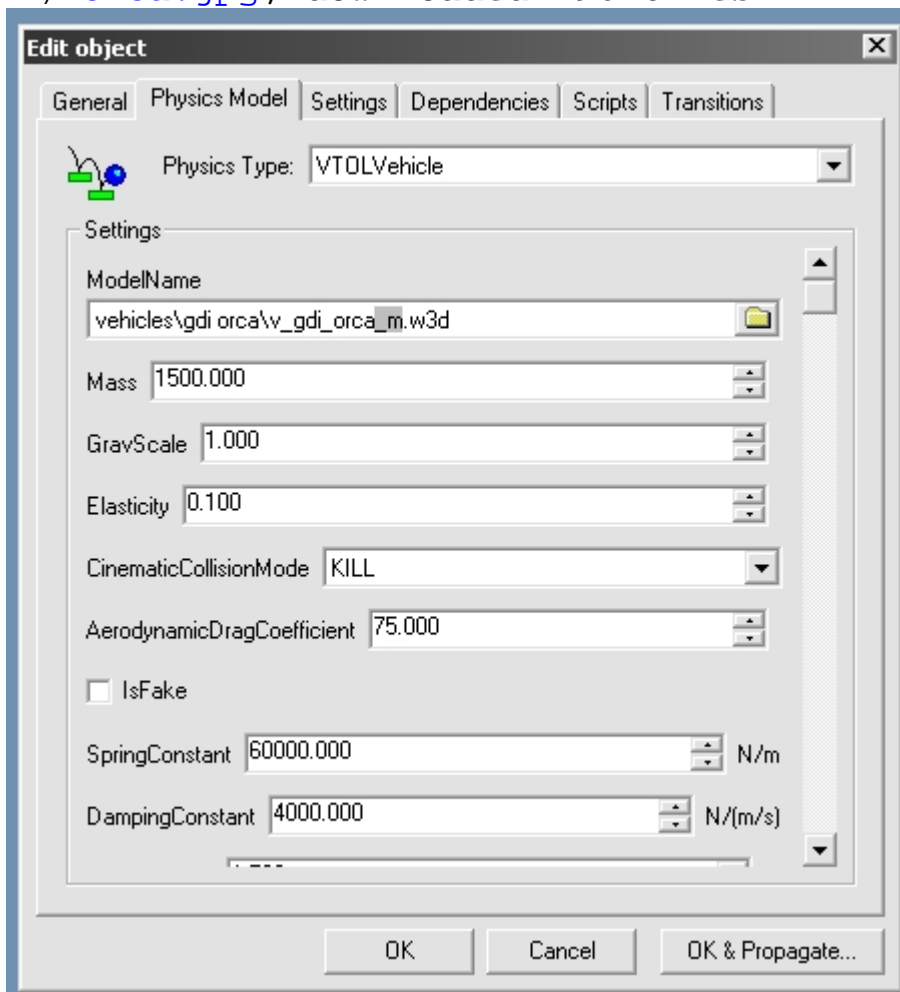
Subject: Re: Bizarre LE (LevelEDIT) crash  
Posted by [Oblivion165](#) on Mon, 22 Oct 2007 18:59:41 GMT  
[View Forum Message](#) <> [Reply to Message](#)

---

Temp the preset and remove the \_m on the model name.

## File Attachments

1) [orca.jpg](#), downloaded 190 times



---

Subject: Re: Bizarre LE (LevelEDIT) crash

Posted by [danpaul88](#) on Mon, 22 Oct 2007 19:00:19 GMT

[View Forum Message](#) <> [Reply to Message](#)

I think you have to temp the Orca and change its model name, due to the model name used not actually existing in always.dat. In the temped version change 'vehicles\gdi\_orca\v\_gdi\_orca\_m.w3d' to 'vehicles\gdi\_orca\v\_gdi\_orca.w3d' and it should work.

I seem to remember previous topics about this using that as the solution, I don't know if its the BEST solution though.

EDIT: Oh snap... Oblivion beat me

---

Subject: Re: Bizarre LE (LevelEDIT) crash  
Posted by [Oblivion165](#) on Mon, 22 Oct 2007 19:01:36 GMT  
[View Forum Message](#) <> [Reply to Message](#)

---

danpaul88 wrote on Mon, 22 October 2007 15:00  
EDIT: Oh snap... Oblivion beat me

Boon doggies

---

Subject: Re: Bizarre LE (LevelEDIT) crash  
Posted by [bat66wat6](#) on Mon, 22 Oct 2007 19:43:37 GMT  
[View Forum Message](#) <> [Reply to Message](#)

---

THnx alot guys...it works now

Now when/If i wanna i can add a Orca or Orca spawner to the map

LOL, how do i change the size of my sig?

---

Subject: Re: Bizarre LE (LevelEDIT) crash  
Posted by [Canadacdn](#) on Mon, 22 Oct 2007 20:17:10 GMT  
[View Forum Message](#) <> [Reply to Message](#)

---

WHAT THE FUCKING HELL MAKE YOUR SIGNATURE SMALLER  
SDHBADHSDBJBADSBJASDBADSBHASDBJDSA. (Use photoshop or something to resize it.)

---

Subject: Re: Bizarre LE (LevelEDIT) crash  
Posted by [reborn](#) on Mon, 22 Oct 2007 20:46:49 GMT  
[View Forum Message](#) <> [Reply to Message](#)

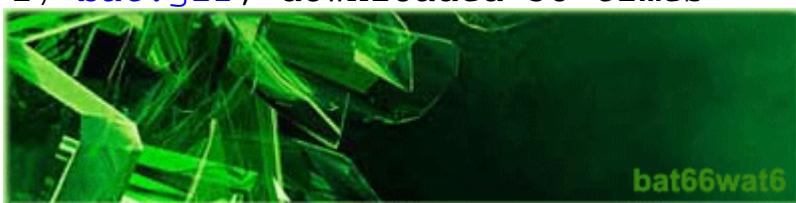
---

This is crap, but use it because yours hurts my eyes.

#### File Attachments

---

1) [bat.gif](#), downloaded 58 times



bat66wat6

---

Subject: Re: Bizarre LE (LevelEDIT) crash  
Posted by [bat66wat6](#) on Mon, 22 Oct 2007 21:02:28 GMT  
[View Forum Message](#) <> [Reply to Message](#)

---

I know it is insanely big! DUH But please chill, i need your help to "Fucking use Photshop or something" to resize it!

Oh Reborn(I love your Tutorials ) could you be so kind to umm edit that one you offered me but with the text "It will consume us all!" in the bottom left corner as well as bat66wat6 in the bottom right...

---

---

Subject: Re: Bizarre LE (LevelEDIT) crash  
Posted by [reborn](#) on Mon, 22 Oct 2007 21:09:47 GMT  
[View Forum Message](#) <> [Reply to Message](#)

---

- 1) Read the post above yours
  - 2) Look at the attachment
  - 3) Let realisation hit you
- 

---

Subject: Re: Bizarre LE (LevelEDIT) crash  
Posted by [Jerad2142](#) on Mon, 22 Oct 2007 21:11:13 GMT  
[View Forum Message](#) <> [Reply to Message](#)

---

Canadacd wrote on Mon, 22 October 2007 14:17WHAT THE FUCKING HELL MAKE YOUR SIGNATURE SMALLER SDHBADHSDBJBADSBJASDBADSBHASDBJDSA. (Use photoshop or something to resize it.)  
And for those who aren't rich, use MS paint.

---

---

Subject: Re: Bizarre LE (LevelEDIT) crash  
Posted by [bat66wat6](#) on Mon, 22 Oct 2007 21:15:12 GMT  
[View Forum Message](#) <> [Reply to Message](#)

---

I would prefer it alot more if it had the text "It will consume us all!" on it

---

---

Subject: Re: Bizarre LE (LevelEDIT) crash  
Posted by [IronWarrior](#) on Tue, 23 Oct 2007 05:13:00 GMT  
[View Forum Message](#) <> [Reply to Message](#)

---

Where is an fucking mod when you need one.

Hits "Report user to mod, whatever" button lots of times.

---

Also, what the fuck, shouldn't the forum not even allow things that size to be added?

---

---

Subject: Re: Bizarre LE (LevelEDIT) crash  
Posted by [bat66wat6](#) on Tue, 23 Oct 2007 12:21:56 GMT  
[View Forum Message](#) <> [Reply to Message](#)

---

You have all gone mad at me! I mean WTF chill out damn it i will make the sig fucking smaller if it SENDS YOU LOONY TUNES!  
Damn

---