

---

Subject: Graphics driver n00b  
Posted by [Veyrdite](#) on Thu, 16 Aug 2007 10:33:17 GMT  
[View Forum Message](#) <> [Reply to Message](#)

---

What are they and what should i use???? I'm being told Intel extreme graphics is the worst thing ever (daa, its from Intel) but i never knew it really mattered. I have no graphics card installed (even n00bier) so I'm guessing it all drains from my processor.

What should i install and does it really matter?

---

---

Subject: Re: Graphics driver n00b  
Posted by [Ryu](#) on Thu, 16 Aug 2007 10:37:57 GMT  
[View Forum Message](#) <> [Reply to Message](#)

---

Quote:I have no graphics card installed

Then how are you browsing these forums or playing Renegade?

Okay, DO this: Start > Right click "My PC" > Properties > Hardware > Click "Device Manager" > Click the "+" next to "Display Devices" and tell me whats there.

If you're using a old nVidia Card, They stopped supporting there cards with drivers.

If you're using ATi then you're in luck! they care for there customers.

EDIT: Drivers for your graphics card can help improve performance, etc, I recommend updating but using the wrong drivers \*could\* mess your system up.

---

---

Subject: Re: Graphics driver n00b  
Posted by [Veyrdite](#) on Thu, 16 Aug 2007 10:46:55 GMT  
[View Forum Message](#) <> [Reply to Message](#)

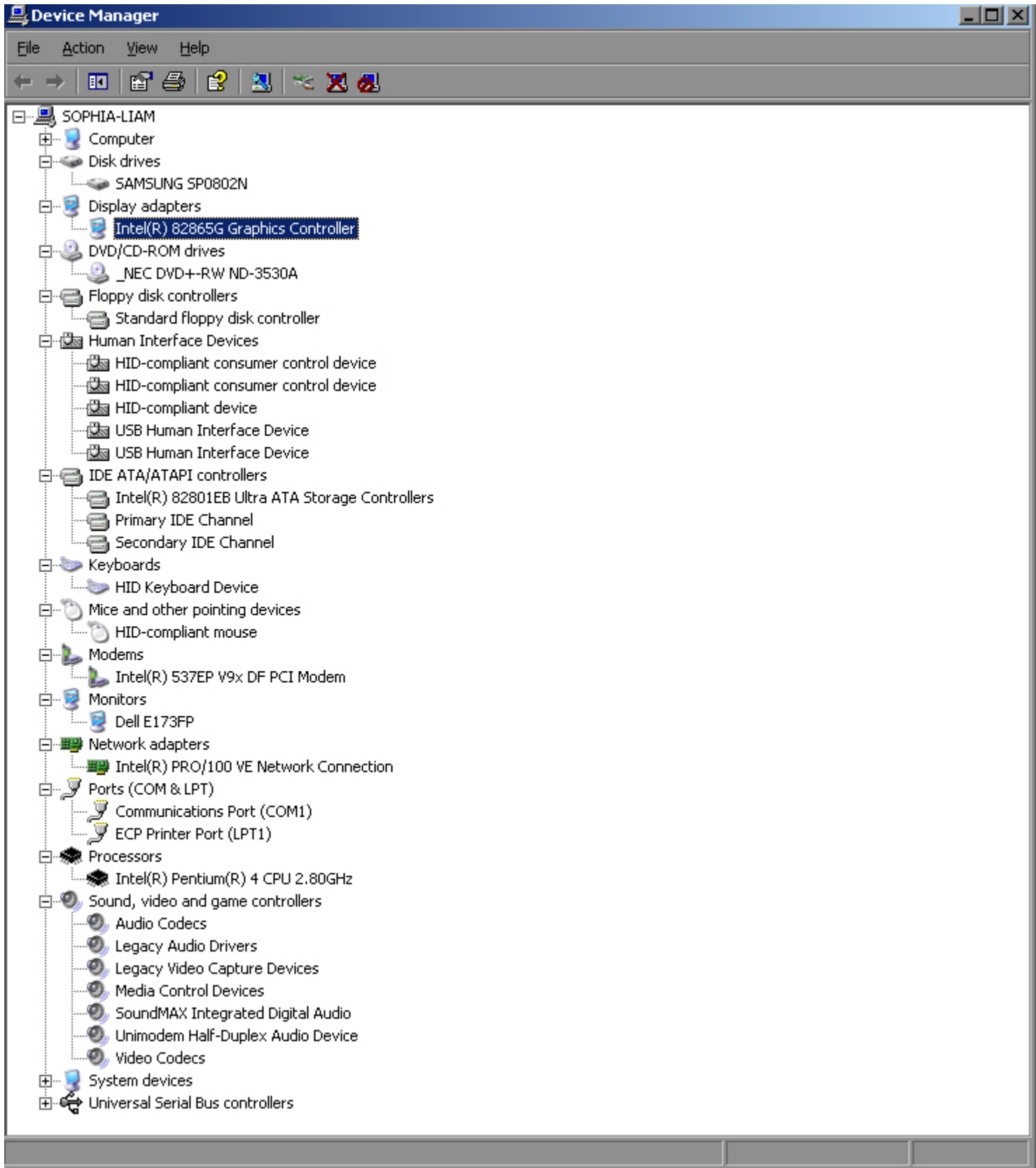
---

I have a Graphics card lying around somewhere a year or so old, but i have never used it. Hopefully i will discard my retarded "Dell Dimention 3000<budget plastics and co>" and buy myself a new one soon, probably construct my own as i already have the graphics card, a dvd rewrite and a (80 gig i think) hard drive.

### File Attachments

---

1) [devices.jpg](#), downloaded 954 times



Subject: Re: Graphics driver n00b  
Posted by [Caveman](#) on Thu, 16 Aug 2007 11:06:10 GMT  
[View Forum Message](#) <> [Reply to Message](#)

---

Ryu wrote on Thu, 16 August 2007 11:37Quote:I have no graphics card installed

Then how are you browsing these forums or playing Renegade?

He has onboard VGA. Like he mentioned in his post.

Quote:I'm being told Intel extreme graphics

---

---

Subject: Re: Graphics driver n00b  
Posted by [Veyrdite](#) on Thu, 16 Aug 2007 11:13:57 GMT  
[View Forum Message](#) <> [Reply to Message](#)

---

On board VGA is?

---

---

Subject: Re: Graphics driver n00b  
Posted by [nopol10](#) on Thu, 16 Aug 2007 11:14:20 GMT  
[View Forum Message](#) <> [Reply to Message](#)

---

That is one of the oldest Intel GMA you have. If you want to get a graphics card, get an ATI one. X1950 if you are on budget, 2900HD if you want the best one out there.

And Viking will come along claiming that ATI sucks.

On board VGA means the graphics is calculated on the processor and not another card. Onboard stuff usually means no Hardware Transform and Lighting and = sucky graphics.

---

---

Subject: Re: Graphics driver n00b  
Posted by [sadukar09](#) on Thu, 16 Aug 2007 11:17:00 GMT  
[View Forum Message](#) <> [Reply to Message](#)

---

nopol10 wrote on Thu, 16 August 2007 12:14That is one of the oldest Intel GMA you have. If you want to get a graphics card, get an ATI one. X1950 if you are on budget, 2900HD if you want the best one out there.

And Viking will come along claiming that ATI sucks.

On board VGA means the graphics is calculated on the processor and not another card. Onboard stuff usually means no Hardware Transform and Lighting and = sucky graphics.

---

Is Viking Dr.KillGood??? I for now got a ATI X1550...My 8800GTS fried...and EVGA is being an ass.

---

---

Subject: Re: Graphics driver n00b  
Posted by [Caveman](#) on Thu, 16 Aug 2007 11:17:48 GMT  
[View Forum Message](#) <> [Reply to Message](#)

---

nopol10 wrote on Thu, 16 August 2007 12:14 That is one of the oldest Intel GMA you have. If you want to get a graphics card, get an ATI one. X1950 if you are on budget, 2900HD if you want the best one out there.

And Viking will come along claiming that ATI sucks.

No sorry that would be my Job. ATi does infact suck but we should save that for another topic.

Onboard VGA means you have a graphics card built into your motherboard just like your sound is onboard. If you want a graphics card, could you tell us your motherboard Make and Model so we can see whether you have AGP or PCI-E bus.

---

---

Subject: Re: Graphics driver n00b  
Posted by [Veyrdite](#) on Thu, 16 Aug 2007 11:19:00 GMT  
[View Forum Message](#) <> [Reply to Message](#)

---

Quote:....and what should i use????  
Original question, that is for no graphics card sofar  
.

---

---

Subject: Re: Graphics driver n00b  
Posted by [Caveman](#) on Thu, 16 Aug 2007 11:23:33 GMT  
[View Forum Message](#) <> [Reply to Message](#)

---

dthdealer wrote on Thu, 16 August 2007 12:19 Quote:....and what should i use????  
Original question, that is for now.

Go Here and choose what operating system you have (Most probably Windows Home.)

Just incase you're confused. Click This and that should install up 2 date drivers. This will not work on VISTA.

---

---

Subject: Re: Graphics driver n00b  
Posted by [Veyrdite](#) on Thu, 16 Aug 2007 11:39:37 GMT  
[View Forum Message](#) <> [Reply to Message](#)

---

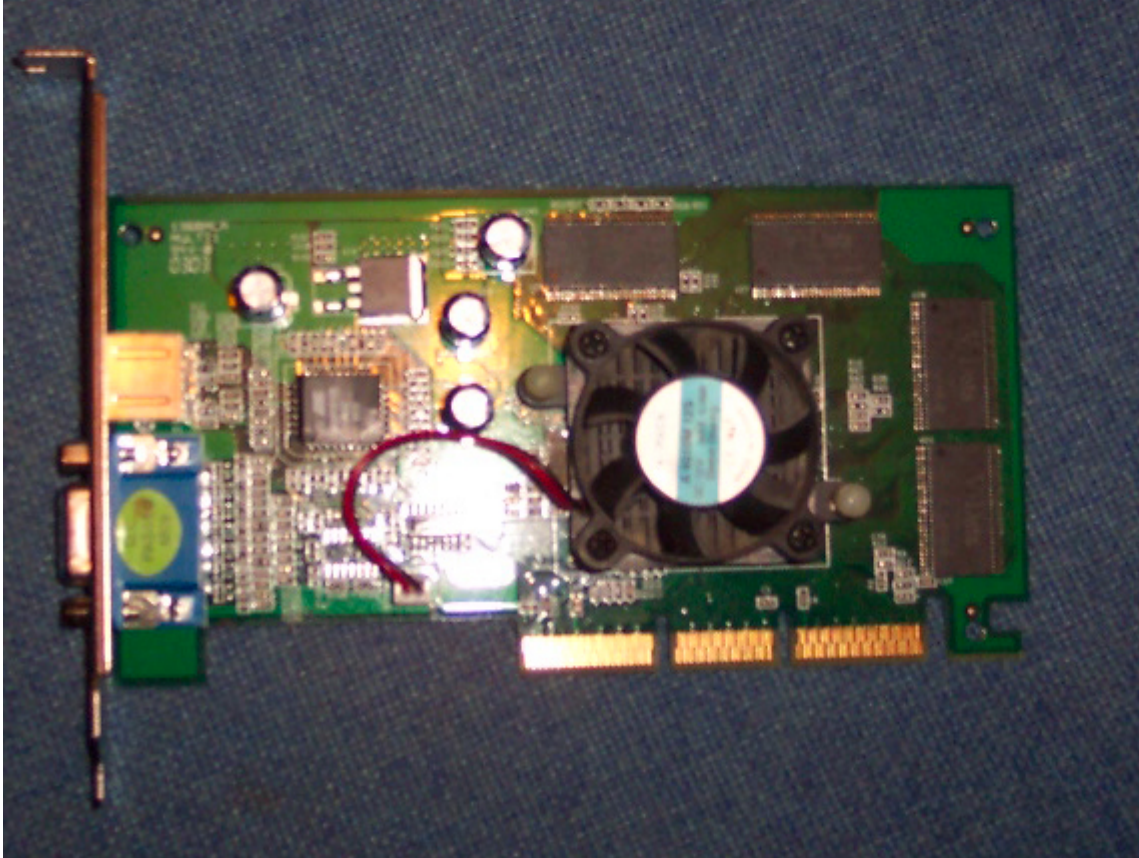
Just get an error when installing. Good night by the way, its 40-past nine in Australia.

Look what i found in a museum. Hopefully good enough

### File Attachments

---

1) [000\\_0004.jpg](#), downloaded 893 times



15/10

Subject: Re: Graphics driver n00b  
Posted by [3663Nixon](#) on Thu, 16 Aug 2007 11:40:12 GMT  
[View Forum Message](#) <> [Reply to Message](#)

---

Some machines dont have an AGP slot, so check that first. Its slower as it uses your cpu and system RAM (rather than its own, as you would get with a physical card)

---

Subject: Re: Graphics driver n00b  
Posted by [Caveman](#) on Thu, 16 Aug 2007 11:40:54 GMT  
[View Forum Message](#) <> [Reply to Message](#)

---

dthdealer wrote on Thu, 16 August 2007 12:39Just get an error when installing.

Care to elaborate?

---

Subject: Re: Graphics driver n00b  
Posted by [Veyrdite](#) on Thu, 16 Aug 2007 11:46:08 GMT  
[View Forum Message](#) <> [Reply to Message](#)

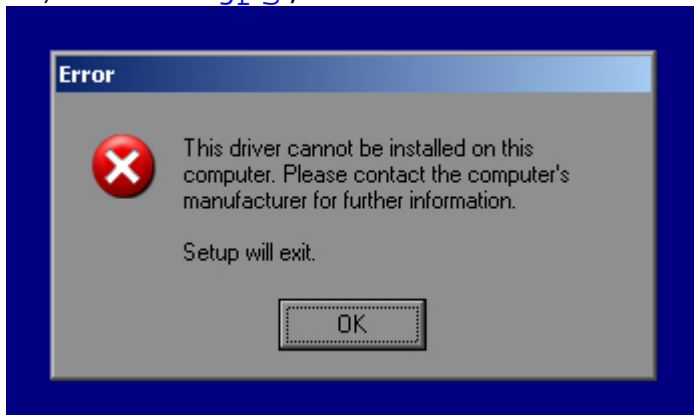
---

Brings back old memories that warning does.

Quote:Some machines dont have an AGP slot, so check that first. Its slower as it uses your cpu and system RAM (rather than its own, as you would get with a physical card  
AGP? I'm hopeless

### File Attachments

1) [error.jpg](#), downloaded 886 times



Subject: Re: Graphics driver n00b  
Posted by [Caveman](#) on Thu, 16 Aug 2007 11:50:43 GMT  
[View Forum Message](#) <> [Reply to Message](#)

---

What operating system are you using? That error message looks like its from Windows 98SE/ME

---

---

Subject: Re: Graphics driver n00b  
Posted by [Veyrdite](#) on Thu, 16 Aug 2007 11:53:51 GMT  
[View Forum Message](#) <> [Reply to Message](#)

---

XP home, as i said it brings back old memories. Does look like 98 or me if you ignore the picture quality on the warning.

---

---

Subject: Re: Graphics driver n00b  
Posted by [Caveman](#) on Thu, 16 Aug 2007 11:58:54 GMT  
[View Forum Message](#) <> [Reply to Message](#)

---

Ok do this:

Press the windows key (Inbetween ctrl and alt) and pause/break key > Hardware > Device Manager > Display Adapters > Intel (whatever it says) > Driver. Take a screenshot of that window for me please.

---

---

Subject: Re: Graphics driver n00b  
Posted by [Chuck Norris](#) on Thu, 16 Aug 2007 13:06:06 GMT  
[View Forum Message](#) <> [Reply to Message](#)

---

The Dimension 3000 lacks AGP, and it has ONLY regular PCI. No PCI-Express. In layman's terms, your computer has very little potential in way of video cards. That model was intended as a basic machine. You can install a PCI card, but they will not be high performers and will cost alot for what you actually get.

On PCI, from greatest to worst, here are your options.

ATi Radeon X1300/X1550- The latter is just an improved X1300. Although I prefer nVidia, ATi has the best performance on PCI.

nVidia GeForce 6200- Probably around par, give or take, with a GeForce4 Ti4200, which isn't half bad.

nVidia GeForce 5600

nVidia GeForce 5700LE- "Lesser Edition" of the real GeForce 5700, so the normal GeForce 5600 beats it.

nVidia GeForce 5500- Is basically an overclocked GeForce 5200.

ATi Radeon 9250

nVidia GeForce 5200- SLOW, SLOW, SLOW. I think it sometimes even lost to the GeForce4 MX series cards.

Anything lower (even those near the bottom of the list) will barely outperform your onboard VGA, so don't bother with anything below the GeForce 5500, and even avoid that unless you have to.

There's ALOT of things to pay attention to. Namely, avoid any LE or SE cards, because they're lower end versions of the "normal" cards because they're usually running on 64-bit memory buses, which won't perform well at all. Also, remember, you CAN NOT use AGP or PCI Express cards, so remember that before you buy anything. Normal PCI cards are what you need. That card you pictured above has an AGP connector, so it won't fit or work in your computer.

Some may be rare to find, and others may be expensive, but a GeForce 5600 and above should be enough for Renegade. Just don't expect blazing speeds at high resolutions.

---

---

Subject: Re: Graphics driver n00b  
Posted by [sadukar09](#) on Thu, 16 Aug 2007 13:09:34 GMT  
[View Forum Message](#) <> [Reply to Message](#)

---

But wouldn't buy a brand new PC with something like Intel X3000 (It's not THAT bad as the last generation) or ATI X1600/nVidia 7600GT

---

---

Subject: Re: Graphics driver n00b  
Posted by [Romaner](#) on Thu, 16 Aug 2007 19:09:42 GMT  
[View Forum Message](#) <> [Reply to Message](#)

---

dthdealer... i highly advise you not to build your own system since you lack the essential knowledge that you need in order to buy compatible parts. if you do indeed decide to build one yourself you will need tons of advice or you will end up just wasting your money.

---

---

Subject: Re: Graphics driver n00b  
Posted by [puddle\\_splasher](#) on Thu, 16 Aug 2007 20:41:01 GMT  
[View Forum Message](#) <> [Reply to Message](#)

---

We are using the Radeon Sapphire 9600. It plays CSS, BF2, GTA blah blah blah and of course Renegade.

It didnt break the bank and has proved its worth.

Stick with what the guys tell you are tried and trusted cards.

---

---

Subject: Re: Graphics driver n00b  
Posted by [Veyrdite](#) on Sun, 19 Aug 2007 09:44:27 GMT  
[View Forum Message](#) <> [Reply to Message](#)

---

I can easily make my own PC, the only thing this topic shows is that i know nothing about on board VGA which is Software, not hardware.  
Quote:Ok do this:

Press the windows key (Inbetween ctrl and alt) and pause/break key > Hardware > Device Manager > Display Adapters > Intel (whatever it says) > Driver. Take a screenshot of that window for me please.

I know that this computer is crap, and i need to buy a new card, but that will all happen in a few months. It has a rate of 40fps while at 1152x864 with all detail settings set to their lowest except the texture detail set to its highest, that is during a normal or SP game, 20fps in a graphic-intense game or level, 30fps in roleplay2. I dont want a graphics card just yet, and by the time i get one those there will be a better card at the same price.

All i want to know is what graphics driver/on board VGA driver to use At this date.

### File Attachments

---

1) [graphdriver.jpg](#), downloaded 760 times

**Intel(R) 82865G Graphics Controller Properties** [?] [X]

General | Driver | Details | Resources

 Intel(R) 82865G Graphics Controller

Device type: Display adapters  
Manufacturer: Intel Corporation  
Location: PCI bus 0, device 2, function 0

Device status

This device is working properly.  
If you are having problems with this device, click Troubleshoot to start the troubleshooter.


Troubleshoot...

Device usage:  
Use this device (enable)

OK Cancel

**Intel(R) 82865G Graphics Controller Properties** [?] [X]

General | Driver | Details | Resources

 Intel(R) 82865G Graphics Controller

Driver Provider: Intel Corporation  
Driver Date: 20/09/2005  
Driver Version: 6.14.10.4396  
Digital Signer: Microsoft Windows Hardware Compatibility Publ

Driver Details... To view details about the driver files.

Update Driver... To update the driver for this device.

Roll Back Driver If the device fails after updating the driver, roll back to the previously installed driver.

Uninstall To uninstall the driver (Advanced).

OK Cancel

**Intel(R) 82865G Graphics Controller Properties** [?] [X]

General | Driver | Details | Resources

 Intel(R) 82865G Graphics Controller

Subject: Re: Graphics driver n00b  
Posted by [Caveman](#) on Sun, 19 Aug 2007 11:01:22 GMT  
[View Forum Message](#) <> [Reply to Message](#)

---

Im going to go on a long shot and say that your drivers for your onboard VGA are fully updated. Intel doesn't seem to have released any drivers past 2005.

If you're not EXPing any problems with the drivers you're using at the moment then theres no need to change them. Why try and fix something that isn't broken?

---

---

Subject: Re: Graphics driver n00b  
Posted by [Chuck Norris](#) on Sun, 19 Aug 2007 18:49:09 GMT  
[View Forum Message](#) <> [Reply to Message](#)

---

dthdealer wrote on Sun, 19 August 2007 04:44I can easily make my own PC, the only thing this topic shows is that i know nothing about on board VGA which is Software, not hardware. Not entirely true. The video work is done through software, that is, the CPU, but it's not like you can change the software drivers and have a new video card. It's worked through software, but it's still the same piece of video hardware. dthdealer wrote on Sun, 19 August 2007 04:44All i want to know is what graphics driver/on board VGA driver to use At this date. I've used the Dell provided drivers (yes, I have a Dell too, though I'm using an AGP card) and the Intel ones, and saw no difference. Those are the only two drivers for it that im aware of.

---

---

Subject: Re: Graphics driver n00b  
Posted by [light](#) on Sun, 19 Aug 2007 21:47:40 GMT  
[View Forum Message](#) <> [Reply to Message](#)

---

dthdealer wrote on Sun, 19 August 2007 21:44I can easily make my own PC, the only thing this topic shows is that i know nothing about on board VGA which is Software, not hardware.

It's both. Onboard graphics features the same type of chip as a graphics card, but doesn't have its own dedicated memory. It's designed to support 80% of users who will just browse the web and email.

---

---

Subject: Re: Graphics driver n00b  
Posted by [Veyrdite](#) on Mon, 20 Aug 2007 08:29:41 GMT  
[View Forum Message](#) <> [Reply to Message](#)

---

I'm not part of that 80% then.

I want to know if there is a better driver that will give me better fps in game-play than any of the Intel ones. I know I'm fine right now, but as soon as a map has a polygon spike ren lags more than my mouse does at low battery, and when i frap something i drop down to 10 fps

---

---

Subject: Re: Graphics driver n00b  
Posted by [JPNOD](#) on Mon, 20 Aug 2007 09:15:03 GMT  
[View Forum Message](#) <> [Reply to Message](#)

---

Point is, that onboard graphics won't give you any higher fps even with a better driver.. Intel makes decent/quality onboard graphics. But like others said that's just for the "mail/web/word thingy. There is some decent onboard out there, but it's not on your motherboard. To bad you don't have a AGP slot, because a 2.8ghz p4 with 800 bus is not bad at all and with a decent graphics card you can easily get 60 fps over 12 players in Renegade on high detail, with that said your better of buying a new PC.

---

Subject: Re: Graphics driver n00b  
Posted by [light](#) on Mon, 20 Aug 2007 11:31:37 GMT  
[View Forum Message](#) <> [Reply to Message](#)

---

As far as onboard graphics go, Intel are in the middle. At the top end are GeForce/ATI integrated, and at the bottom end are everyone else.

To boost your FPS, you'll be wanting to tweak your Renegade settings, I doubt you'll find better drivers than the standard Intel ones.

---

Subject: Re: Graphics driver n00b  
Posted by [Veyrdite](#) on Sat, 25 Aug 2007 03:16:36 GMT  
[View Forum Message](#) <> [Reply to Message](#)

---

light wrote on Mon, 20 August 2007 21:31

To boost your FPS, you'll be wanting to tweak your Renegade settings, I doubt you'll find better drivers than the standard Intel ones.

Tweak as in adjust quality settings, right?

---

Subject: Re: Graphics driver n00b  
Posted by [cncnick13](#) on Sat, 25 Aug 2007 04:03:31 GMT  
[View Forum Message](#) <> [Reply to Message](#)

---

i would recomend nvidia geforce go 6150 or higher

---

Subject: Re: Graphics driver n00b  
Posted by [sadukar09](#) on Sat, 25 Aug 2007 11:06:44 GMT  
[View Forum Message](#) <> [Reply to Message](#)

---

Err...weren't you asking which card you should get?

---

---

Subject: Re: Graphics driver n00b  
Posted by [Slave](#) on Sat, 25 Aug 2007 17:05:42 GMT  
[View Forum Message](#) <> [Reply to Message](#)

---

that's pretty much like saying  
"i would recommend the absolute slowest card ever created by mankind, or higher"

---