

---

Subject: Tow Truck.

Posted by [Viking](#) on Sat, 07 Jul 2007 06:23:31 GMT

[View Forum Message](#) <> [Reply to Message](#)

---

Ok, so I am making a tow truck for RP2 because it would be cool!

Thoughts?

PS:I know the headlights suck anus I will replace them later.

---

---

Subject: Re: Tow Truck.

Posted by [Commando Burton](#) on Sat, 07 Jul 2007 06:57:05 GMT

[View Forum Message](#) <> [Reply to Message](#)

---

Yes i agree that would be cool. I don't know how to do that stuff but I know Mods.

---

---

Subject: Re: Tow Truck.

Posted by [\\_SSnipe\\_](#) on Sat, 07 Jul 2007 06:59:48 GMT

[View Forum Message](#) <> [Reply to Message](#)

---

RP2?

---

---

Subject: Re: Tow Truck.

Posted by [Veyrdite](#) on Sat, 07 Jul 2007 08:20:28 GMT

[View Forum Message](#) <> [Reply to Message](#)

---

Role Play 2

Less square front end

Front end is slightly smaller

Bump/normal map for a grill etc

Bumper shaped like a real one e.g. ( |\_|\_\_\_\_\_ | )

Rear view mirrors

More than one light per side

Any chance of a peek at the wheels?

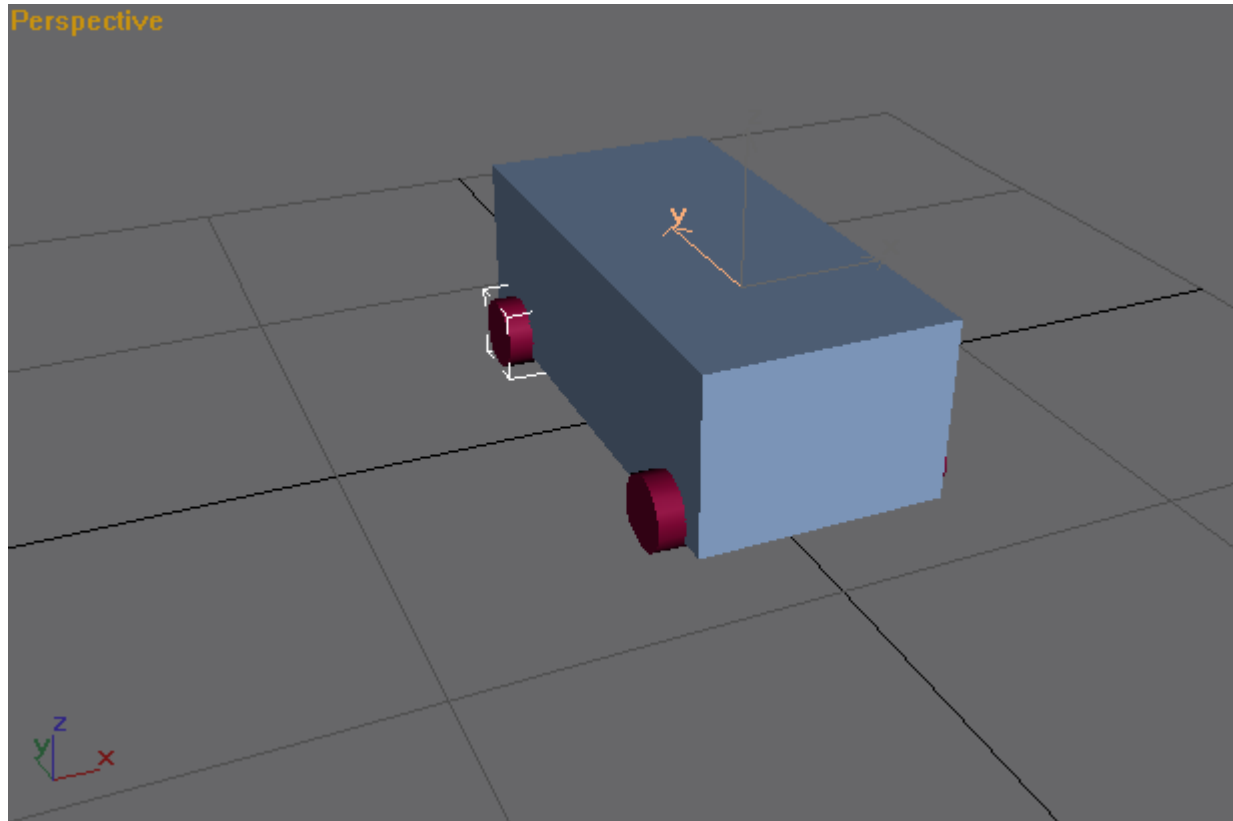
---

---

Subject: Re: Tow Truck.

Posted by [Viking](#) on Sat, 07 Jul 2007 08:57:50 GMT





---

Subject: Re: Tow Truck.

Posted by [Commando Burton](#) on Sat, 07 Jul 2007 18:23:27 GMT

[View Forum Message](#) <> [Reply to Message](#)

---

DUDE YOU HAVE 6 replies and 66veivs that mean its 666 ITS THE END OF THE WORLD!

---

Subject: Re: Tow Truck.

Posted by [Ryu](#) on Sat, 07 Jul 2007 18:33:23 GMT

[View Forum Message](#) <> [Reply to Message](#)

---

RoShamBo wrote on Sat, 07 July 2007 13:14Can you put my awesome truck in RP2?

Fucking 1337.