

---

Subject: Processor Conundrum...

Posted by [nopol10](#) on Sat, 23 Jun 2007 09:52:26 GMT

[View Forum Message](#) <> [Reply to Message](#)

---

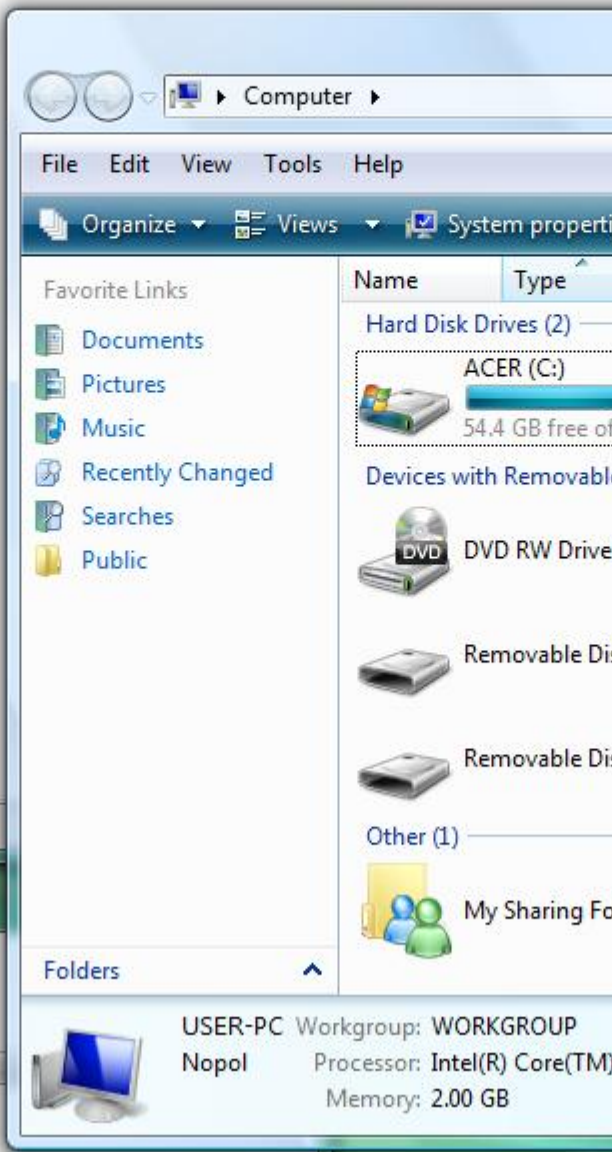
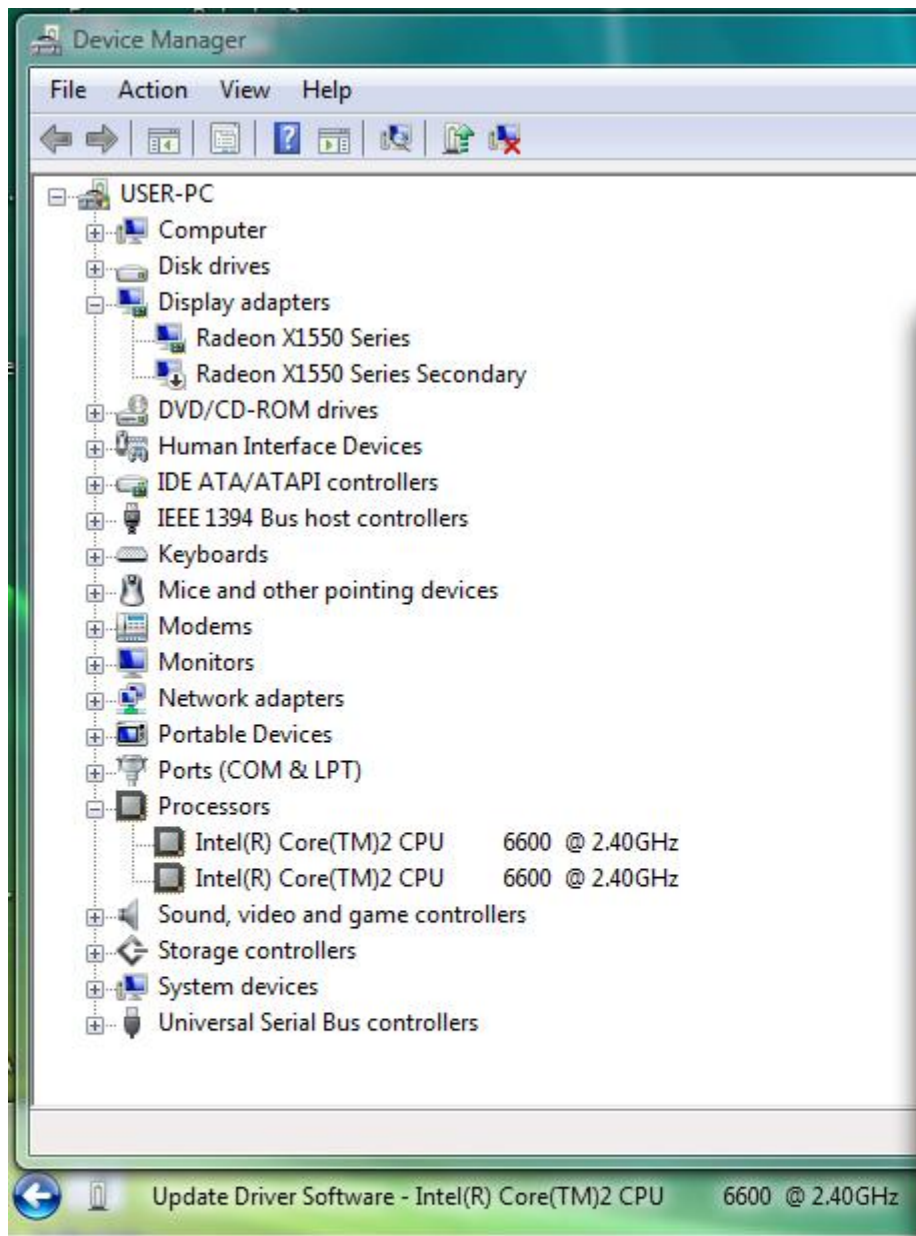
Take a look at this:

So do I have a 1.86 Ghz Processor or a 2.4 one?

### File Attachments

---

1) [odd.jpg](#), downloaded 1009 times



Searching online for software...



---

Subject: Re: Processor Conundrum...  
Posted by [Carrierll](#) on Sat, 23 Jun 2007 13:28:02 GMT  
[View Forum Message](#) <> [Reply to Message](#)

---

What does your BIOS think the speed is?  
(mine outputs it during POST, you might have to enter setup to see)

---

Subject: Re: Processor Conundrum...  
Posted by [Caveman](#) on Sat, 23 Jun 2007 13:30:19 GMT  
[View Forum Message](#) <> [Reply to Message](#)

---

Well its easy to tell. What cpu did you buy? the E6600 or the E6300?

---

Subject: Re: Processor Conundrum...  
Posted by [Ghostshaw](#) on Sat, 23 Jun 2007 13:34:33 GMT  
[View Forum Message](#) <> [Reply to Message](#)

---

He probably has a E6320, its not properly detected by windows yet.

-Ghost-

---

Subject: Re: Processor Conundrum...  
Posted by [ST3ALTH](#) on Sat, 23 Jun 2007 15:51:01 GMT  
[View Forum Message](#) <> [Reply to Message](#)

---

Intel has a habit of lowering its speed when your not running enough programs to use up that much power (in this case, 2.4Ghz is not necessary so it clocks down to 1.86Ghz, and if you run allot more programs, such as games, it clocks back up)

---

Subject: Re: Processor Conundrum...  
Posted by [CarrierII](#) on Sat, 23 Jun 2007 19:36:58 GMT  
[View Forum Message](#) <> [Reply to Message](#)

---

ST3ALTH wrote on Sat, 23 June 2007 10:51 Intel has a habit of lowering its speed when your not running enough programs to use up that much power (in this case, 2.4Ghz is not necessary so it clocks down to 1.86Ghz, and if you run allot more programs, such as games, it clocks back up)

That's IEST (Intel Enhanced Speed-Step Technology)

Only worth it for laptops, as all it saves is power.

(Think I mucked that abbreviation up, nevermind)

---

Subject: Re: Processor Conundrum...  
Posted by [ST3ALTH](#) on Sat, 23 Jun 2007 22:43:59 GMT  
[View Forum Message](#) <> [Reply to Message](#)

---

How come my pc gets it? I have had this for 3 desktop CPU's now :@

---

Subject: Re: Processor Conundrum...

Posted by [nopol10](#) on Sat, 23 Jun 2007 23:39:10 GMT

[View Forum Message](#) <> [Reply to Message](#)

---

Actually, when I bought it it was supposed to be an E6320... So I guess it's a problem with the detection.

---

Subject: Re: Processor Conundrum...

Posted by [ST3ALTH](#) on Sat, 23 Jun 2007 23:41:37 GMT

[View Forum Message](#) <> [Reply to Message](#)

---

I am just saying my past experiences ^^

Who knows, maybe there are detection probs check out reviews for it.

---