

---

Subject: renx question

Posted by [Hades](#) on Sun, 25 Feb 2007 05:33:06 GMT

[View Forum Message](#) <> [Reply to Message](#)

---

Just wandering what renx is measured in like when you make a plane its xxx.xxx What measurement is it.

Thanks

---

---

Subject: Re: renx question

Posted by [TSS888](#) on Sun, 25 Feb 2007 08:50:19 GMT

[View Forum Message](#) <> [Reply to Message](#)

---

Did you mean the units of measurment for the length of something? If this was your question, here's the answer:

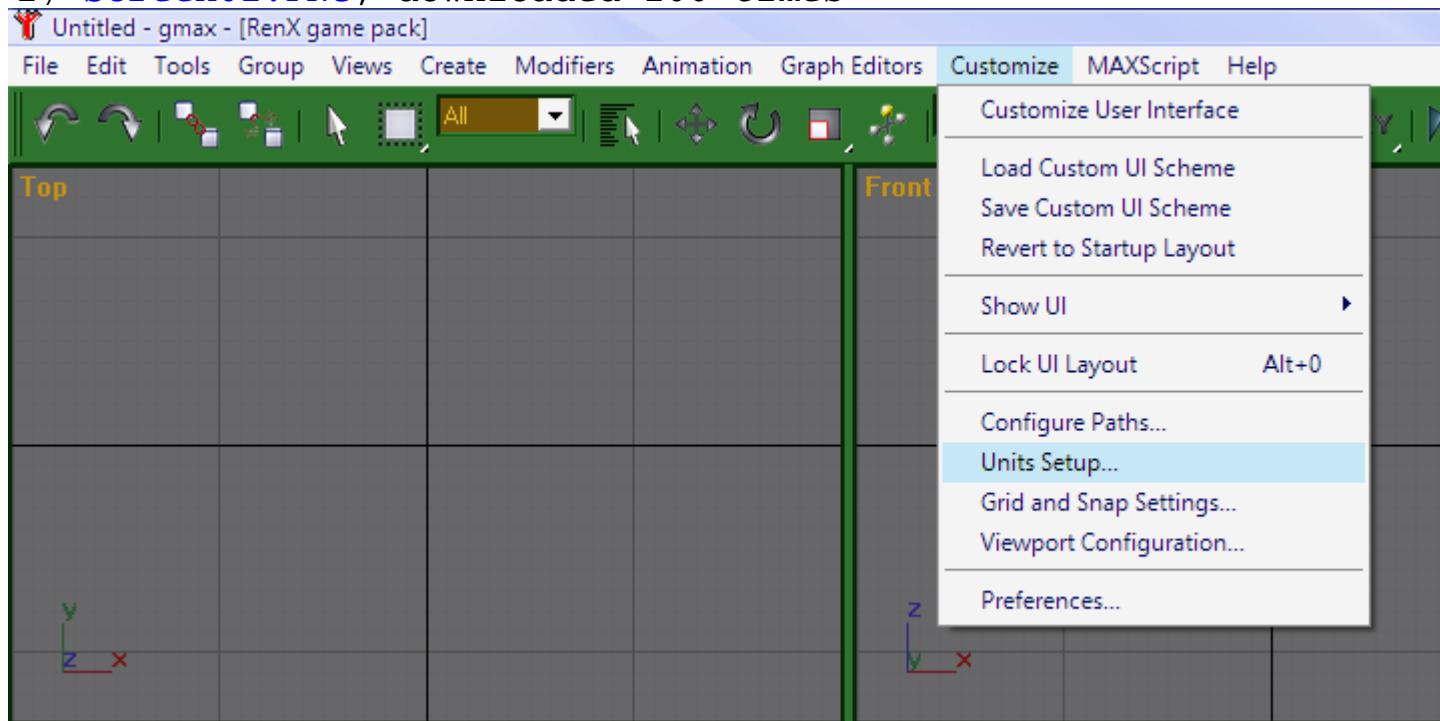
To know the units that you are currently using, go here:

To change the units, simply click on "Units Setup..." and choose the units you want:

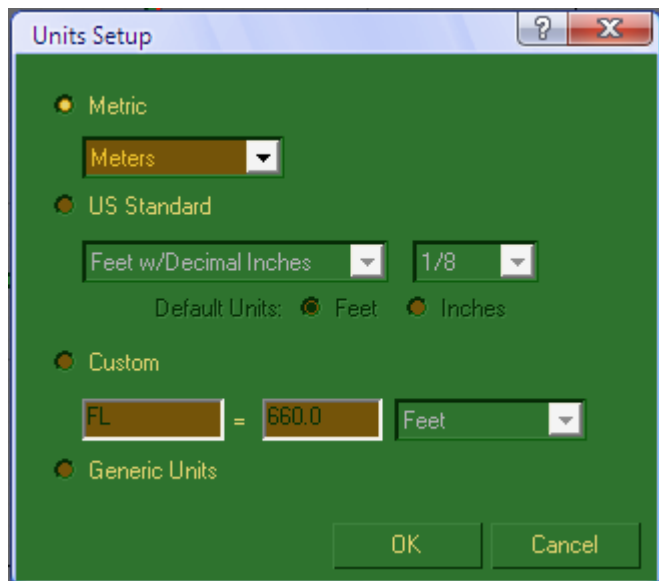
---

## File Attachments

1) [Screen01.PNG](#), downloaded 260 times



2) [Screen02.PNG](#), downloaded 271 times



---

Subject: Re: renx question

Posted by [nopol10](#) on Sun, 25 Feb 2007 09:09:45 GMT

[View Forum Message](#) <> [Reply to Message](#)

---

The standard units renx/gmax uses is Generic Units if you did not touch any settings.

---

---

Subject: Re: renx question

Posted by [Gen\\_Blacky](#) on Mon, 26 Feb 2007 14:59:55 GMT

[View Forum Message](#) <> [Reply to Message](#)

---

Is there any why to set the units in gmax to line up with level edit cause that whould help alot

---

---

Subject: Re: renx question

Posted by [Hades](#) on Wed, 28 Feb 2007 08:43:11 GMT

[View Forum Message](#) <> [Reply to Message](#)

---

Thank guys just what i needed

---