

---

Subject: Bah!

Posted by [BlueThen](#) on Wed, 25 Oct 2006 23:44:35 GMT

[View Forum Message](#) <> [Reply to Message](#)

---

RenX... I've been trying to add textures to the map, They say press m, I press m, nothing happens. I tried it every diffrent way. EVERY TUTORIAL SAYS PRESS M!!! THE FRIGGIN' M KEY DOES NOTHING!!!!

---

---

Subject: Re: Bah!

Posted by [WNxCABAL](#) on Thu, 26 Oct 2006 00:20:11 GMT

[View Forum Message](#) <> [Reply to Message](#)

---

Or you can just press the Renegade Material Editor icon from the toolbar (top right by default).

Its like a checker box

---

---

Subject: Re: Bah!

Posted by [icedog90](#) on Thu, 26 Oct 2006 00:30:22 GMT

[View Forum Message](#) <> [Reply to Message](#)

---

M is just a hotkey. Sometimes it gets messed up and doesn't work. Read above.

---

---

Subject: Re: Bah!

Posted by [R315r4z0r](#) on Thu, 26 Oct 2006 01:03:13 GMT

[View Forum Message](#) <> [Reply to Message](#)

---

bluethen wrote on Wed, 25 October 2006 19:44RenX... I've been trying to add textures to the map, They say press m, I press m, nothing happens. I tried it every diffrent way. EVERY TUTORIAL SAYS PRESS M!!! THE FRIGGIN' M KEY DOES NOTHING!!!!

Your supposed to select the mesh you want to texture first.

(Click on the mesh you want)

---

---

Subject: Re: Bah!

Posted by [icedog90](#) on Thu, 26 Oct 2006 01:32:29 GMT

[View Forum Message](#) <> [Reply to Message](#)

---

It still comes up even if you don't select anything.

---

---

Subject: Re: Bah!

Posted by [BlueThen](#) on Thu, 26 Oct 2006 21:25:31 GMT

---

[View Forum Message](#) <> [Reply to Message](#)

---

razorblade001 wrote on Wed, 25 October 2006 20:03bluethen wrote on Wed, 25 October 2006 19:44RenX... I've been trying to add textures to the map, They say press m, I press m, nothing happens. I tried it every diffrent way. EVERY TUTORIAL SAYS PRESS M!!! THE FRIGGIN' M KEY DOES NOTHING!!!!

Your supposed to select the mesh you want to texture first.

(Click on the mesh you want)

I did... still nothing.

WNxCABAL wrote on Wed, 25 October 2006 19:20Or you can just press the Renegade Material Editor icon from the toolbar (top right by default).

Its like a checker box

There is no checker box...

---

---

Subject: Re: Bah!

Posted by [icedog90](#) on Thu, 26 Oct 2006 21:29:05 GMT

[View Forum Message](#) <> [Reply to Message](#)

---

It's because you have to slide the toolbar over. When you mouse over a certain area there should be a hand so that you can drag it to the side and see more options.

---

---

Subject: Re: Bah!

Posted by [BlueThen](#) on Thu, 26 Oct 2006 21:35:59 GMT

[View Forum Message](#) <> [Reply to Message](#)

---

Can someone tell me this "certain area"?

---

---

Subject: Re: Bah!

Posted by [YSLMuffins](#) on Thu, 26 Oct 2006 21:43:48 GMT

[View Forum Message](#) <> [Reply to Message](#)

---

Perhaps try temporarily increasing your screen resolution so that you can see more of the toolbar. If it's still not there, try reinstalling the Renegade public tools.

---

---

Subject: Re: Bah!

Posted by [icedog90](#) on Thu, 26 Oct 2006 23:07:01 GMT

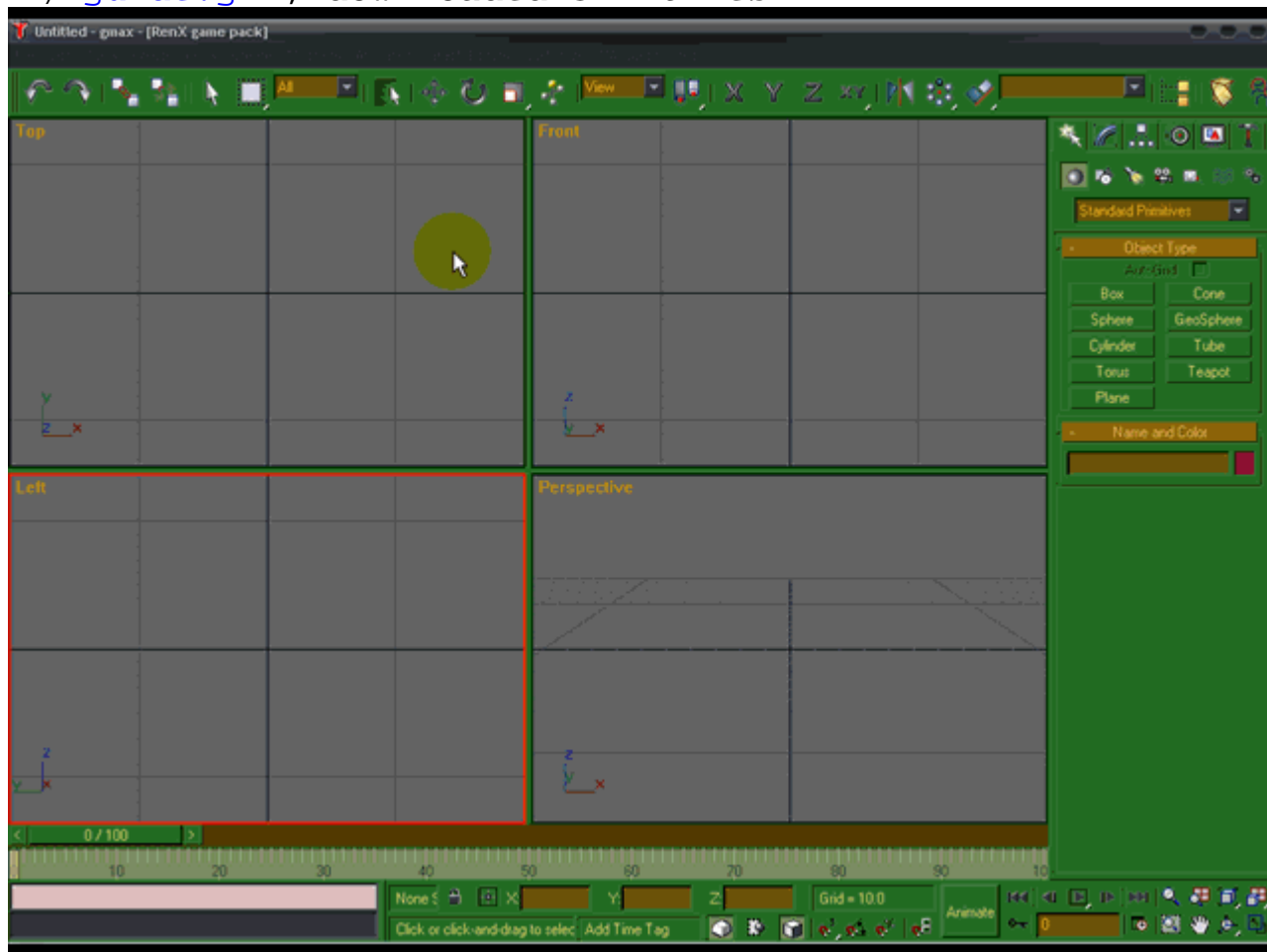
[View Forum Message](#) <> [Reply to Message](#)

---

bother...

## File Attachments

1) [guide.gif](#), downloaded 342 times



---

Subject: Re: Bah!

Posted by [Veyrdite](#) on Fri, 27 Oct 2006 05:59:40 GMT

[View Forum Message](#) <> [Reply to Message](#)

bottom of the screen there are 3 buttons on the right of the thing that normally says time tag, one looks like a slab of weird cheese(left one) CLICK IT. the shortcuts should now work.

---

Subject: Re: Bah!

Posted by [Zion](#) on Fri, 27 Oct 2006 11:27:08 GMT

[View Forum Message](#) <> [Reply to Message](#)

It looks more like a key (keyboard key) than a slab of cheese...