
Subject: Help Please

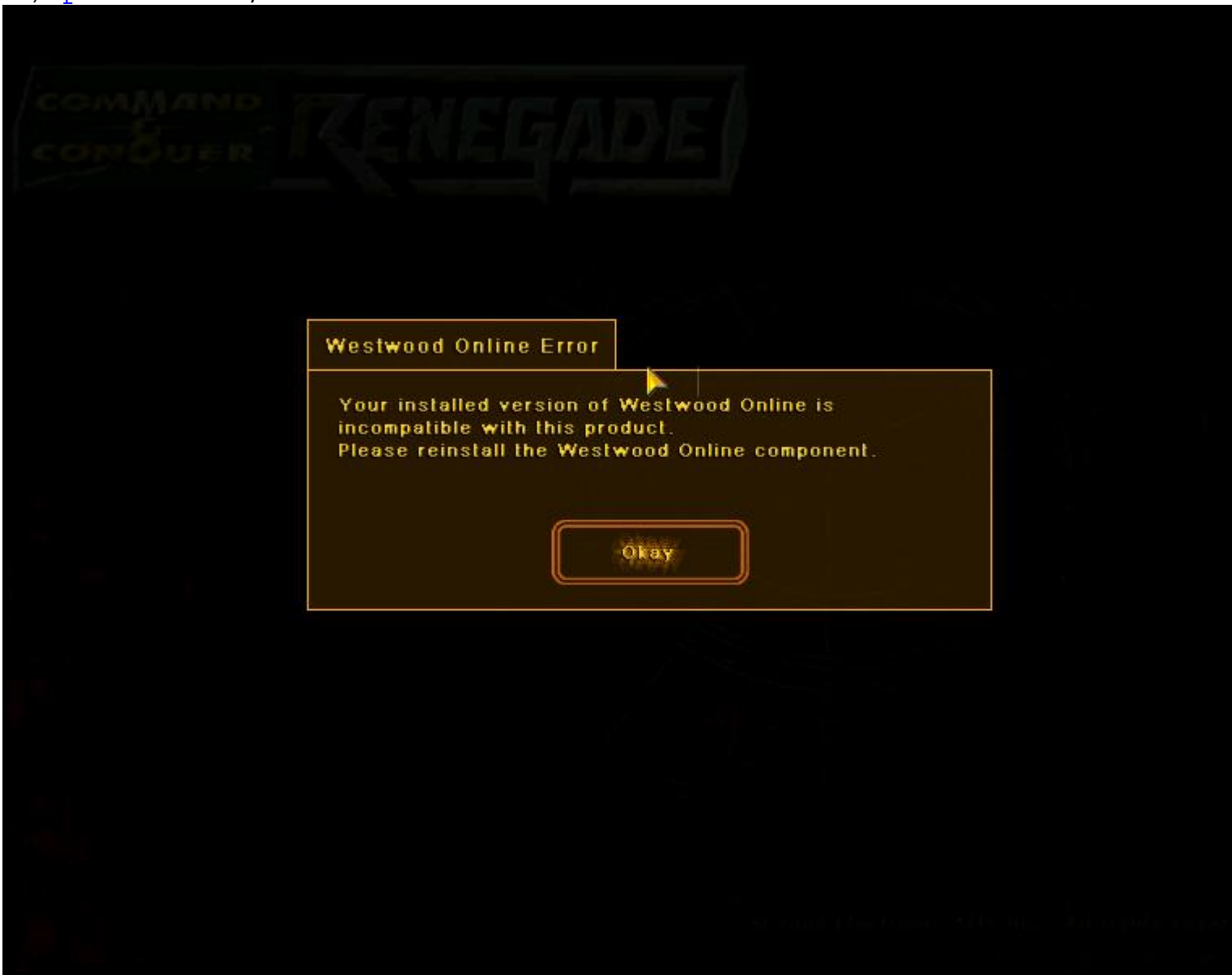
Posted by [ClearEnd](#) on Mon, 21 Aug 2006 18:40:24 GMT

[View Forum Message](#) <> [Reply to Message](#)

Anybody know what to do? I've re-installed already btw.

File Attachments

1) [probcc.JPG](#), downloaded 210 times



Subject: Re: Help Please

Posted by [Blazer](#) on Mon, 21 Aug 2006 20:12:35 GMT

[View Forum Message](#) <> [Reply to Message](#)

Put the install CD in again, but this time ONLY check the "Westwood Online Components" box...it

will act and look like its going to do the full long reinstall, but it will only take a few moments.
