

---

Subject: Buildings

Posted by [anant](#) on Wed, 30 Dec 2015 17:53:32 GMT

[View Forum Message](#) <> [Reply to Message](#)

---

Still working on these, but looking for some feedback or advice.

I don't know what I want for my lower HAND/AIR interior walls.

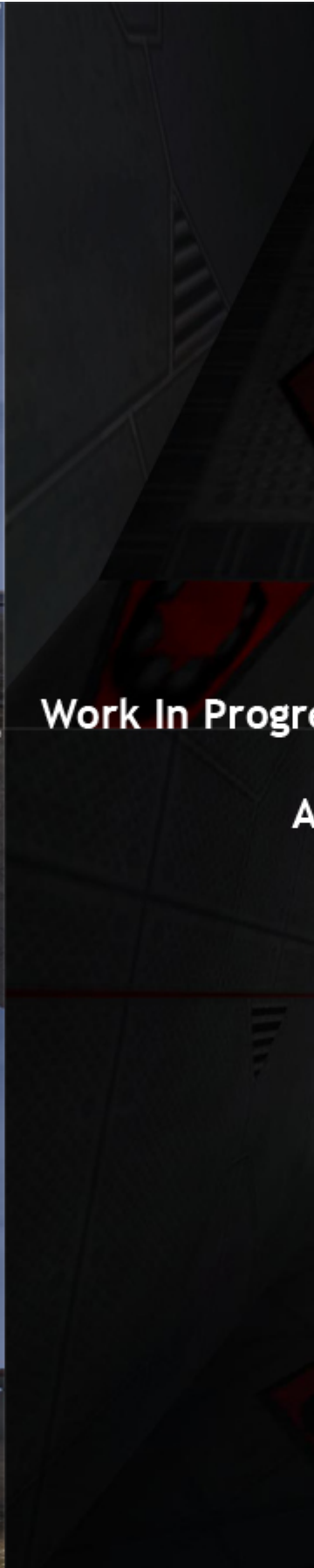
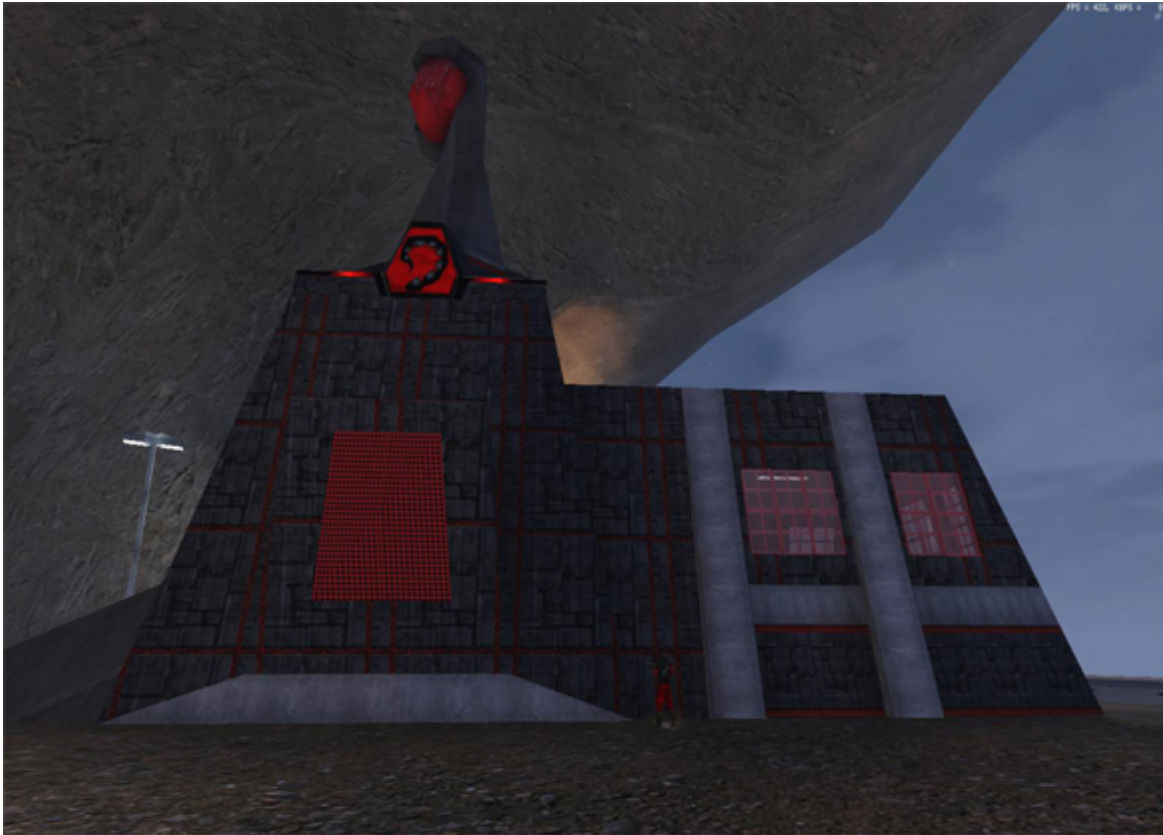
The skin for the hand cement changes the air floor and ceiling, still working on those as well.

More details to come, just a basic design

---

### File Attachments

1) [HAND.jpg](#), downloaded 1483 times



2) [handbase2.jpg](#), downloaded 1462 times

