

---

Subject: Why can't I view my level edit mod folders?  
Posted by [reborn](#) on Fri, 29 Nov 2013 21:07:45 GMT  
[View Forum Message](#) <> [Reply to Message](#)

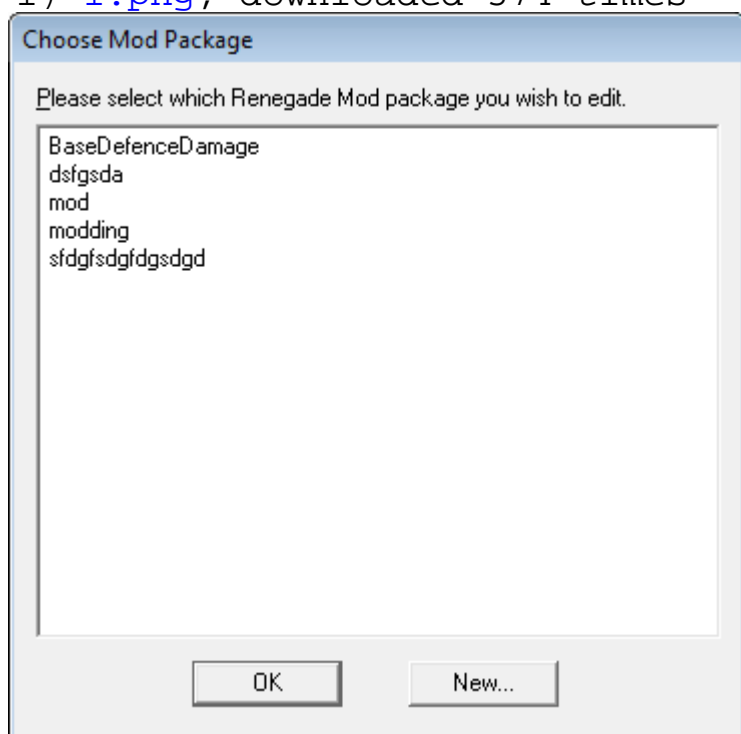
---

I installed renegade public tools, but I can't see my mod folders when I open the level edit folder. However, when I am in level edit I can click on "save as" and browse to see the folders, but they have a lock symbol on them. It's pretty weird:

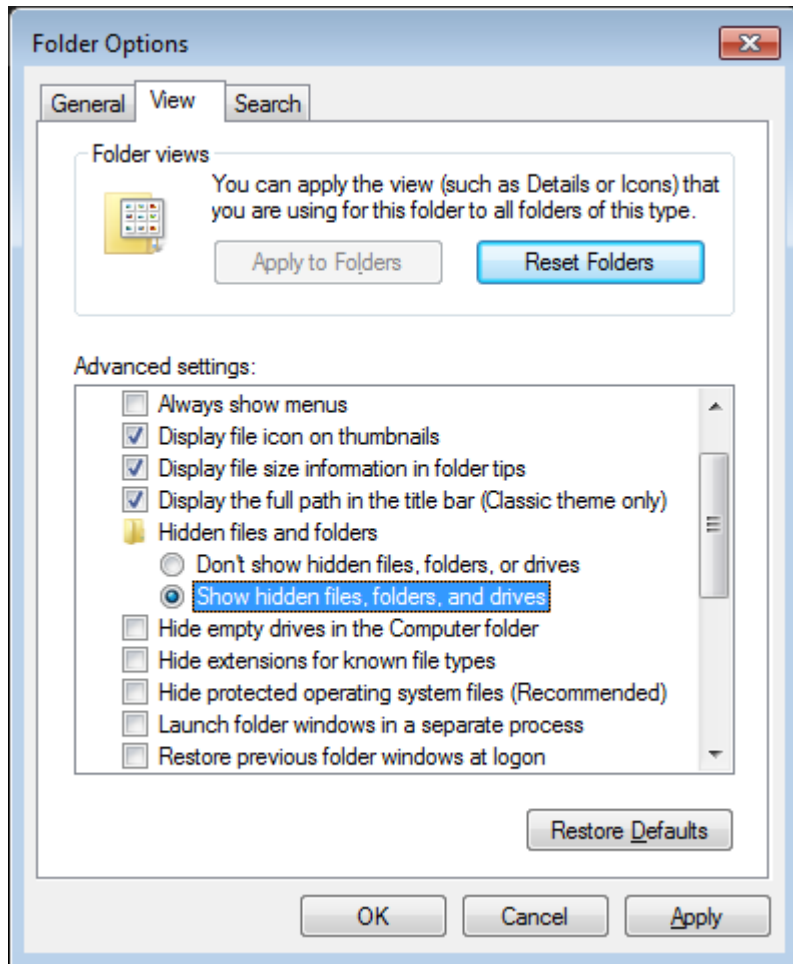
---

## File Attachments

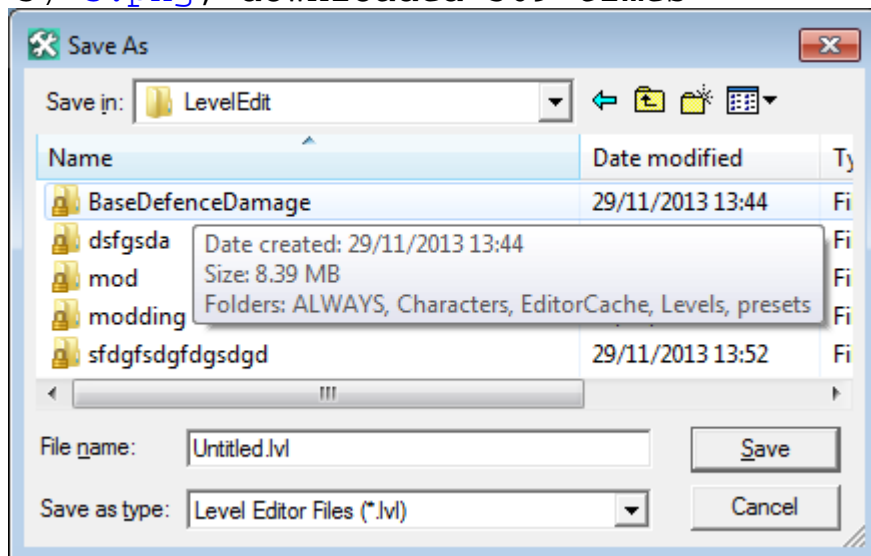
1) [1.png](#), downloaded 574 times



2) [2.png](#), downloaded 577 times



3) [3.png](#), downloaded 569 times



4) [4.png](#), downloaded 566 times

