
Subject: Re: Computer fell off a cliff

Posted by [Starbuzz](#) on Thu, 29 Sep 2011 14:51:48 GMT

[View Forum Message](#) <> [Reply to Message](#)

ty both! I will check the parts of the card again (ATI 4650 btw) with danpaul's tip.

Last night I took the entire card apart, took the heatsink off, removed the fan and cleaned everything again. There were so much thickly crusted hidden dust on the underside. And I removed the old thermal paste from the processor and put new.

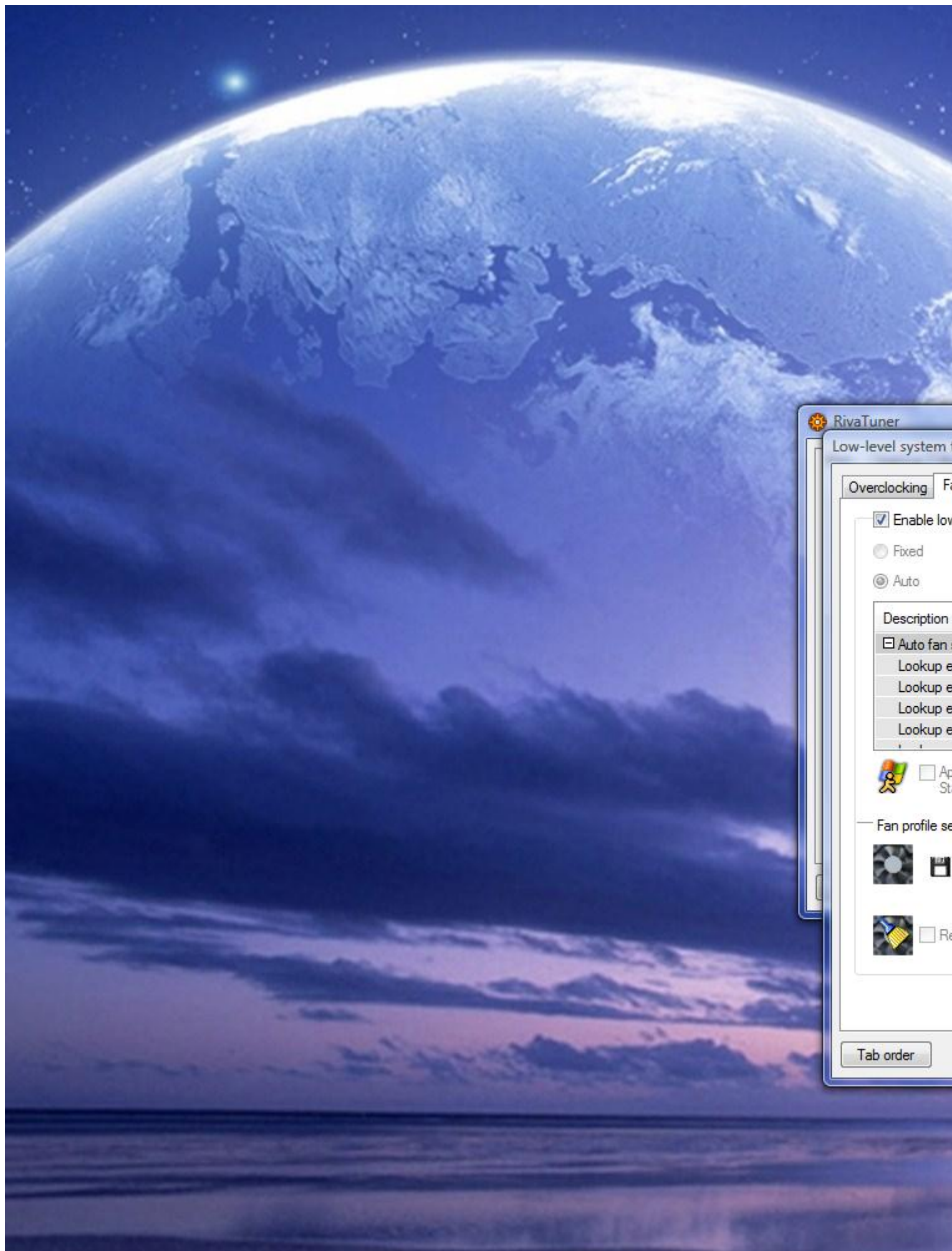
thanks Caveman, I downloaded RivaTuner and looking at the fan control settings. I attached a screenshot...should I do the Reboot to detect?

Toggle Spoiler

Thanks!

File Attachments

1) [RivaFans.jpg](#), downloaded 1281 times



RivaTuner

Low-level system t

Overclocking Fan

☒ Enable low

☐ Fixed

☒ Auto

Description

☒ Auto fan

Lookup e

Lookup e

Lookup e

Lookup e

Lookup e

Lookup e

Ap

St

Fan profile se

Re

Tab order