
Subject: Re: error installing

Posted by [Starbuzz](#) on Tue, 07 Jun 2011 12:56:24 GMT

[View Forum Message](#) <> [Reply to Message](#)

Can you post some screenshots of the explorer with all the drives listed? Here's how mine looks:

^ So you can see all the drives (C, D, T, Z, and so on.)

Put your Rene CD in and the disk drive will change, here it shows in drive F:

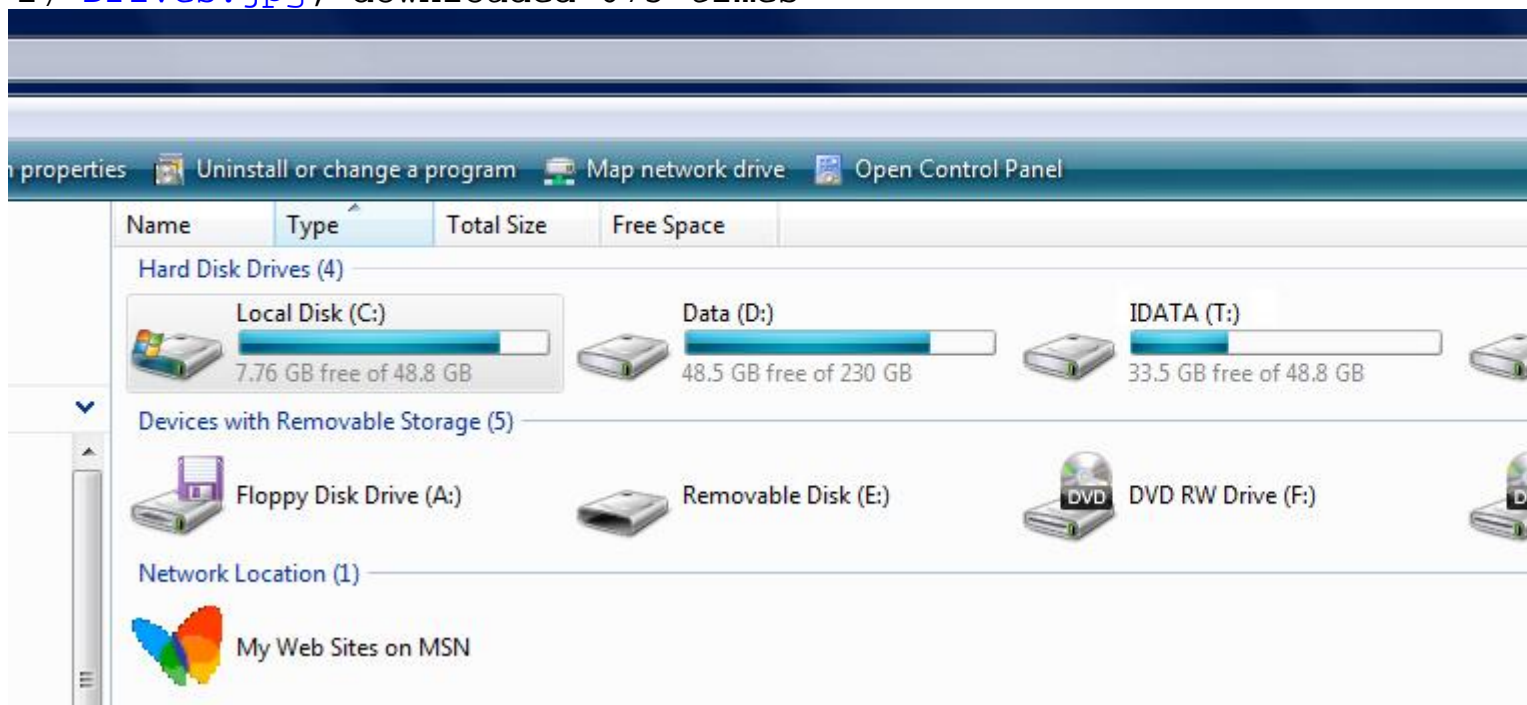
Then you click into the CD drive and see this:

Usually you click Setup.exe as you are doing now. You can also click on Autorun.exe to kick in the install program. This screen shot automatically pop up when you put the CD usually. Click on Autorun.exe and this shows up; click on Install and see if it goes:

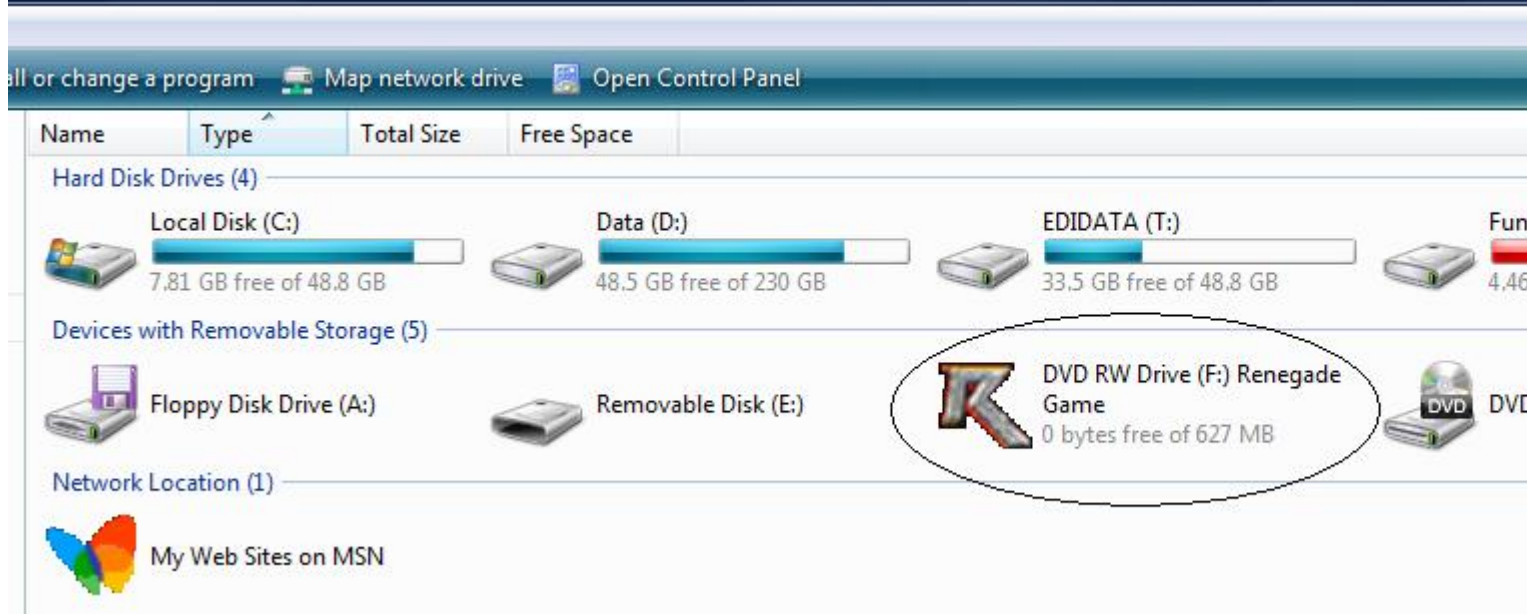
I don't think I really helped. Any screenshot of the error will help if you have not still been able to install.

File Attachments

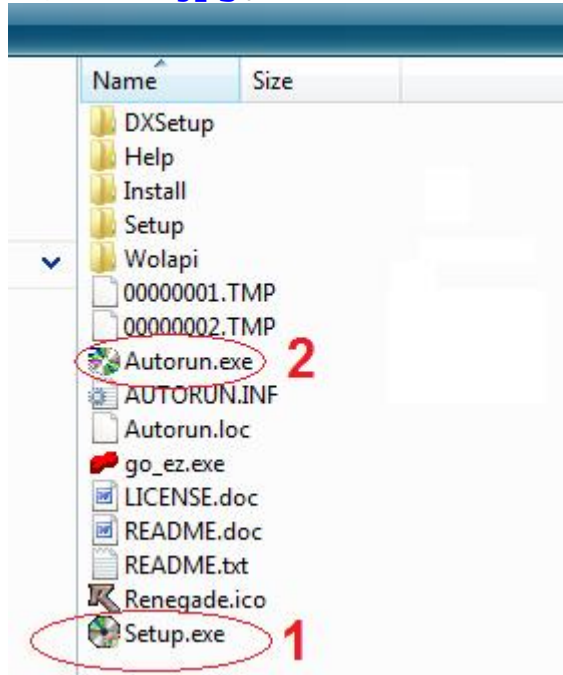
1) [Drives.jpg](#), downloaded 675 times



2) [ReneDrive.jpg](#), downloaded 727 times



3) [Exe.jpg](#), downloaded 742 times



4) [InstallScreen.jpg](#), downloaded 880 times

COMMAND & CONQUER RENEGADE™

Install

Explore CD

Go to Website

GameSpy Arcade

Install MOH Demo

Uninstall

Cancel

Visit www.Westwood.com
for all of the latest
strategies, tournaments,
and events.

Westwood™
STUDIO

©2002 Electronic Arts Inc. All rights reserved. EA GAMES™ is an Electronic Arts™ brand.

