

---

Subject: Re: RA\_Fjord

Posted by [Gen\\_Blacky](#) on Thu, 26 May 2011 16:43:22 GMT

[View Forum Message](#) <> [Reply to Message](#)

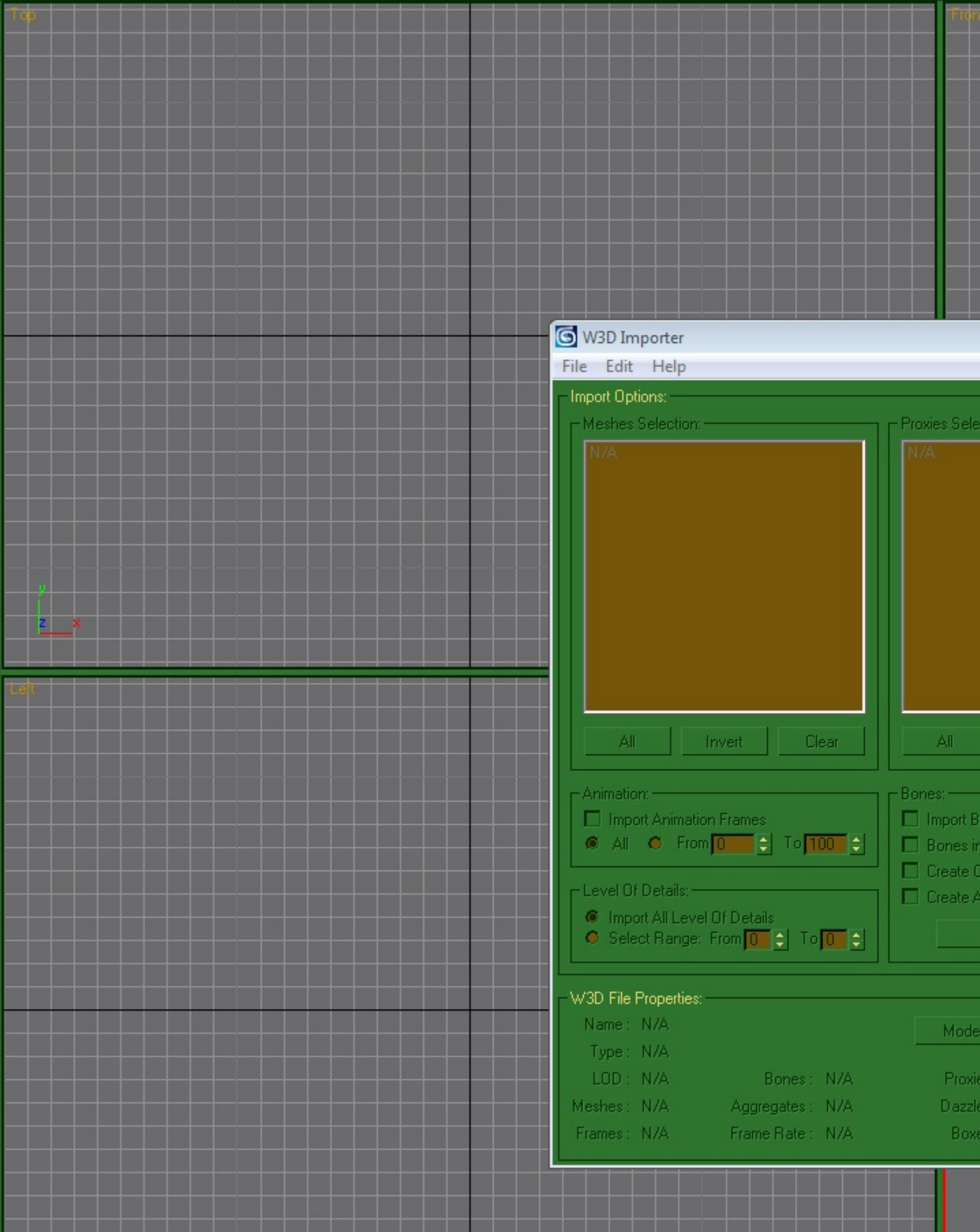
---

Renx w3d importer will work in 3ds max 8 or 9 got it working in both. I'm using 3dsmax 8 with the renx pack. What version are you using the newest version 2012 or something.

---

### File Attachments

1) [3dsmax.jpg](#), downloaded 379 times



### W3D Importer

File Edit Help

Import Options:

Meshes Selection: N/A

Proxies Selection: N/A

All Invert Clear All

Animation:

Import Animation Frames

All  From 0 To 100

Level Of Details:

Import All Level Of Details

Select Range: From 0 To 0

Bones:

Import Bones

Bones in

Create O

Create A

W3D File Properties:

Name: N/A Model

Type: N/A

LOD: N/A Bones: N/A Proxies

Meshes: N/A Aggregates: N/A Dazzle

Frames: N/A Frame Rate: N/A Boxes