
Subject: Re: FPS freeze

Posted by [UksRene](#) on Wed, 28 Apr 2010 10:34:43 GMT

[View Forum Message](#) <> [Reply to Message](#)

Hi

Set affinity gives me an error. As shown in the screenshot

Carrier, I have also added my graphic details in the screenshot too.

I will keep trying to figure out how to get set affinity.

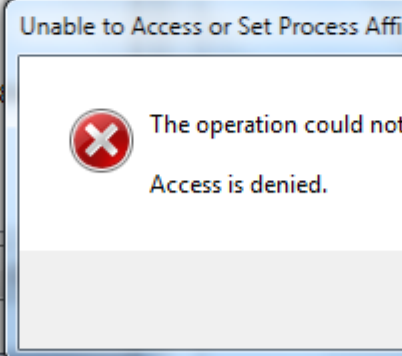
EDITED

I have set affinity to 1 core, I am still getting the FPS freeze. I will reinstall Renegade without scripts to see if it helps.


File Attachments

1) [grahpic and error.png](#), downloaded 930 times

Item	Value
Name	ATI Mobility Radeon HD 5400 Series
PNP Device ID	PCI\VEN_1002&DEV_68E0&SUBSYS_033E1025&REV_00\4&58D3ACD&
Adapter Type	ATI display adapter (0x68E0), ATI Technologies Inc. compatible
Adapter Description	ATI Mobility Radeon HD 5400 Series
Adapter RAM	512.00 MB (536,870,912 bytes)
Installed Drivers	atiu9p64.dll,aticfx64.dll,aticfx64.dll,atiu9pag,aticfx32,aticfx32,atiumd64.
Driver Version	8.712.0.0
INF File	oem15.inf (ati2mtag_Manhattan section)
Color Planes	Not Available
Color Table Entries	4294967296
Resolution	1366 x 768 x 60 hertz
Bits/Pixel	32
Memory Address	0xD0000000-0xDFFFFFFF
Memory Address	0xCFEE0000-0xCFEFFFFF
I/O Port	0x00002000-0x00002FFF
IRQ Channel	IRQ 4294967294
I/O Port	0x000003B0-0x000003BB
I/O Port	0x000003C0-0x000003DF
Memory Address	0xA0000-0xBFFFF
Driver	c:\windows\system32\drivers\atikmpag.sys (8.14.1.6099, 1



Unable to Access or Set Process Affinity

 The operation could not be completed.
Access is denied.