

---

Subject: Re: Sciencepark Renegademap  
Posted by [RedOne](#) on Tue, 09 Dec 2008 21:07:22 GMT  
[View Forum Message](#) <> [Reply to Message](#)

---

I was asked to post some screenshots from gmax. I did it with F4 <grin> I hope this is what you want to see.

The most important pieces are the floors (grey). Here I made a box and converted to poly. With the vertexes I shaped it. With help of keyboard input. The holes for stairs were made with boolean.

The wall with windows and indeed Cabal. Lots of poly's!.

Next the stairs. Also a edit. Poly only with a plane. By keyboard input replaced the vertexes to get this shape.

And the glass wall. Was a box. With boolean I made it like this. It is one box.

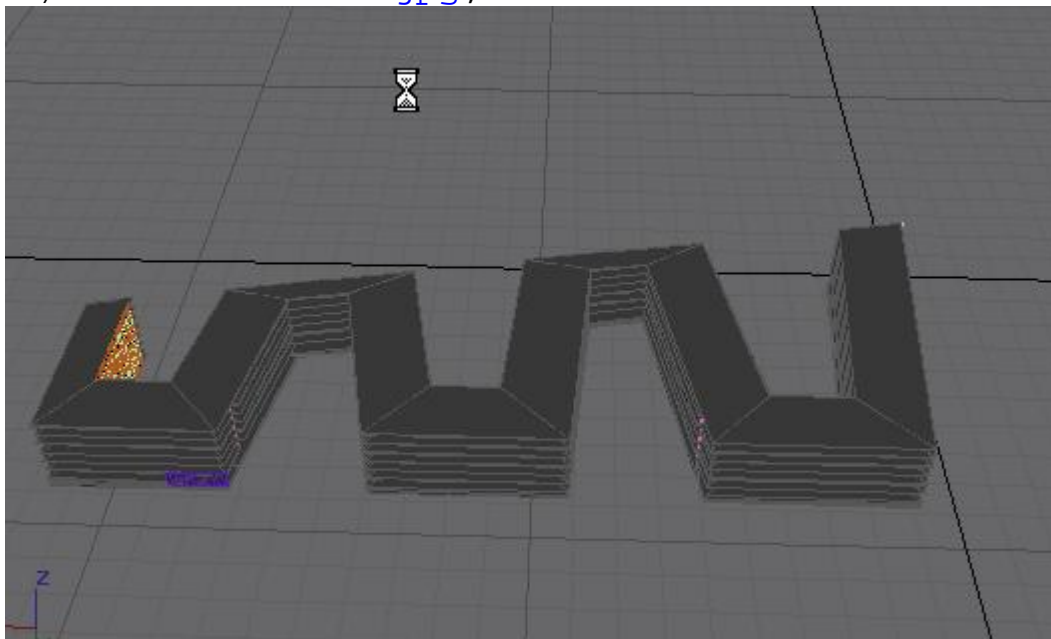
I hope Cabal this what you wanted\

GrTz Red

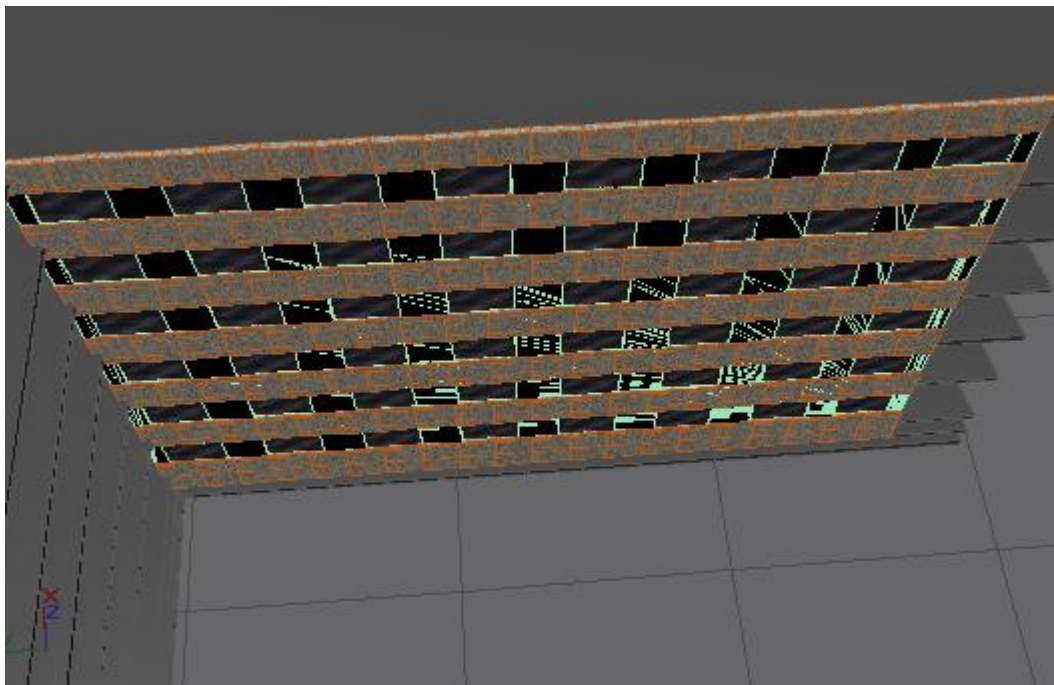
---

### File Attachments

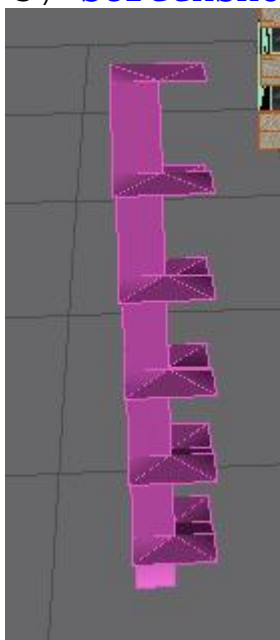
1) [ScreenShot006.jpg](#), downloaded 670 times



2) [ScreenShot007.jpg](#), downloaded 672 times



3) [ScreenShot008.jpg](#), downloaded 676 times



4) [ScreenShot009.jpg](#), downloaded 682 times

