
Subject: new to C++ need help

Posted by [Darknes2](#) on Thu, 02 Aug 2007 18:46:12 GMT

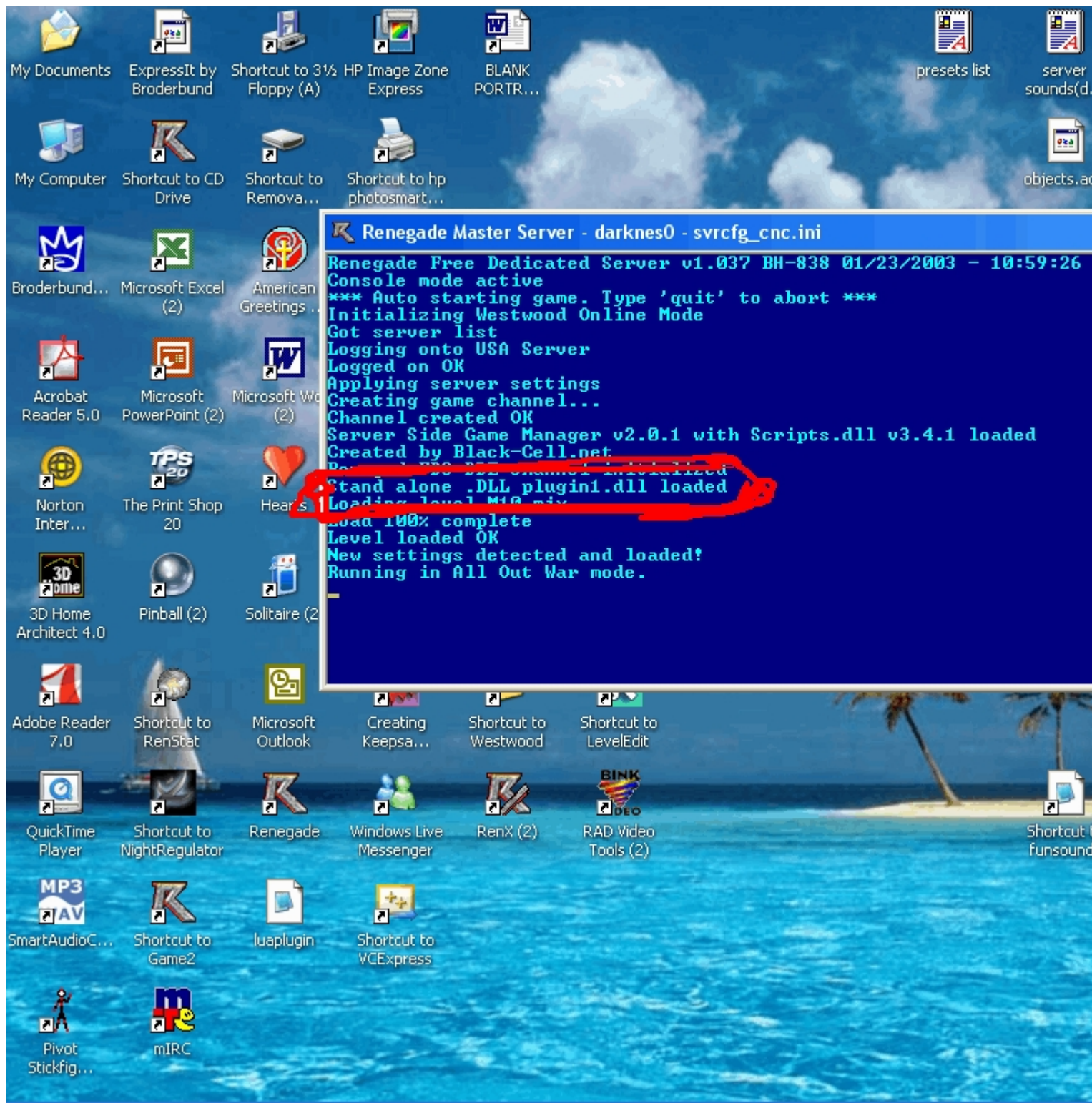
[View Forum Message](#) <> [Reply to Message](#)

ok i compile my plugin wich contains the scripts wich are probably wrongly made :S
and when i load the plugin for SSGM it says

how do i make it an SSGM plugin like the luaplugin????? isnt that possible

File Attachments

1) [OMG.jpg](#), downloaded 782 times



```
Renegade Master Server - darknes0 - svrcfg_cnc.ini
Renegade Free Dedicated Server v1.037 BH-838 01/23/2003 - 10:59:26
Console mode active
*** Auto starting game. Type 'quit' to abort ***
Initializing Westwood Online Mode
Got server list
Logging onto USA Server
Logged on OK
Applying server settings
Creating game channel...
Channel created OK
Server Side Game Manager v2.0.1 with Scripts.dll v3.4.1 loaded
Created by Black-Cell.net
Stand alone .DLL plugin1.dll loaded
Loading level M10 mix
Load 100% complete
Level loaded OK
New settings detected and loaded!
Running in All Out War mode.
```