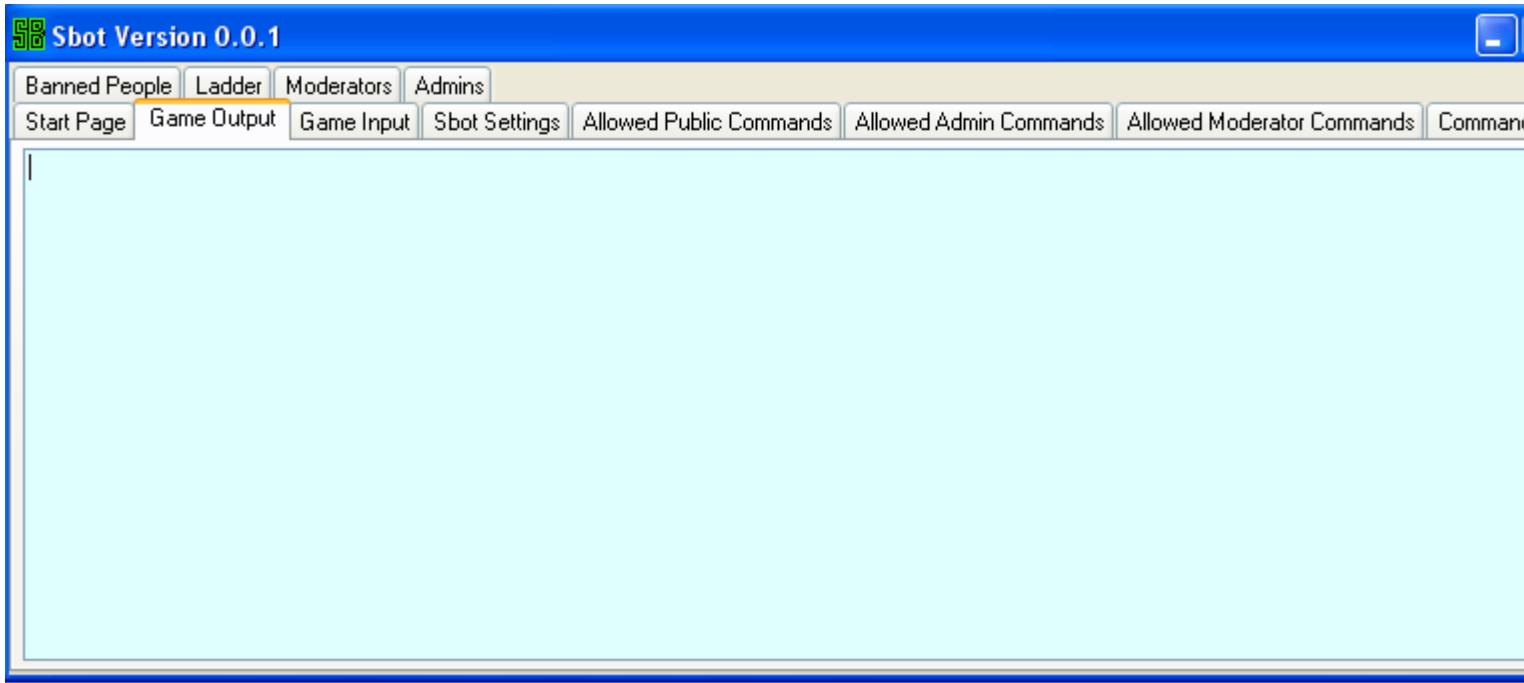

Subject: Re: Official SBot Thread
Posted by [jnz](#) on Sun, 21 Jan 2007 14:59:12 GMT
[View Forum Message](#) <> [Reply to Message](#)

File Attachments

1) [1.png](#), downloaded 1470 times

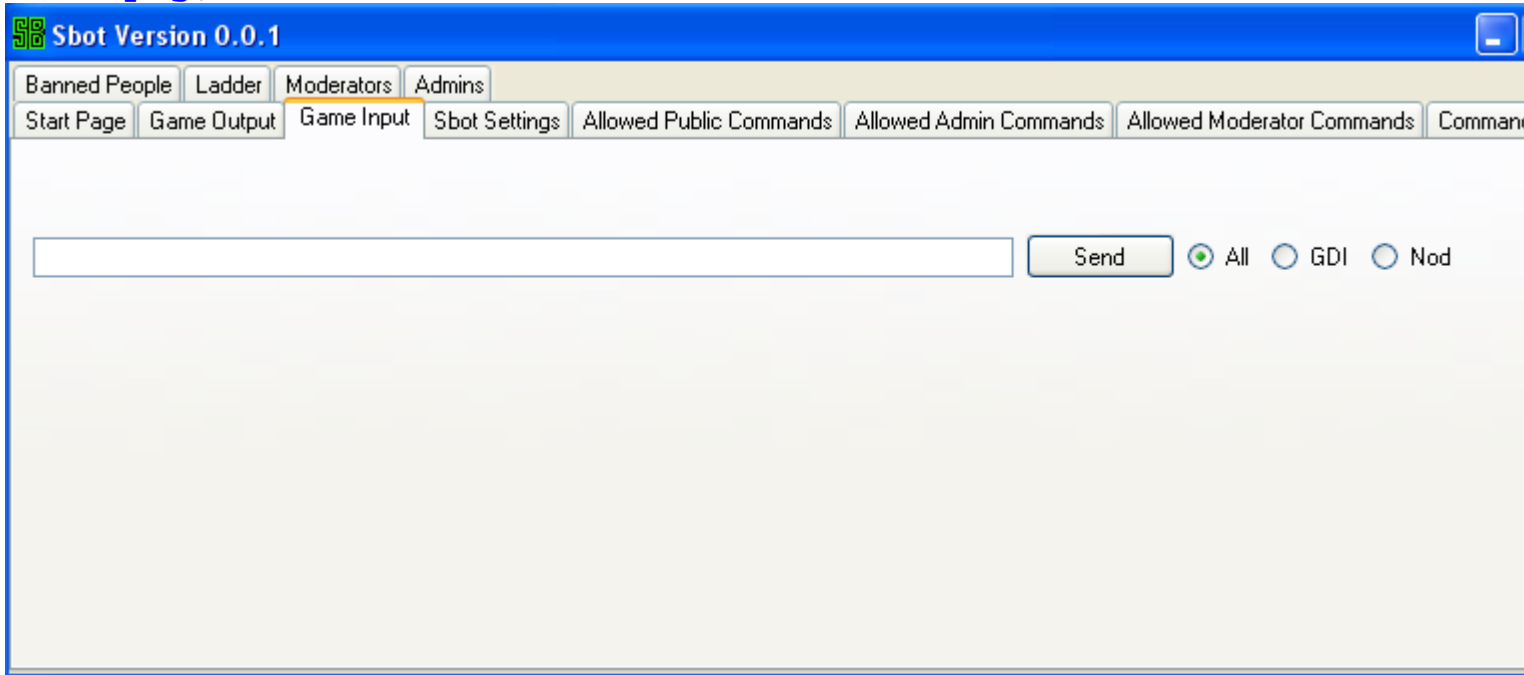


2) [2.png](#), downloaded 1440 times



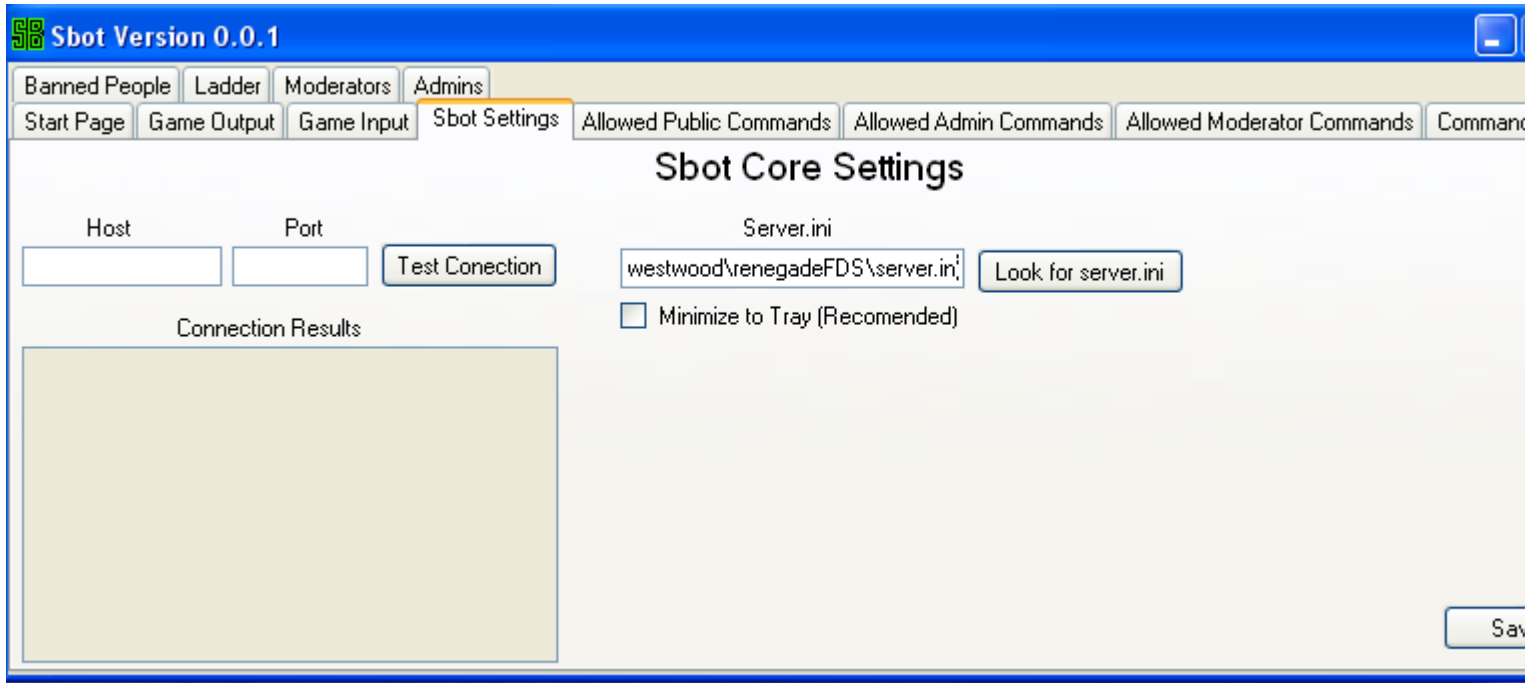
This will Just Give information on game output. EG "roshambo killed someone"

3) [3.png](#), downloaded 1458 times



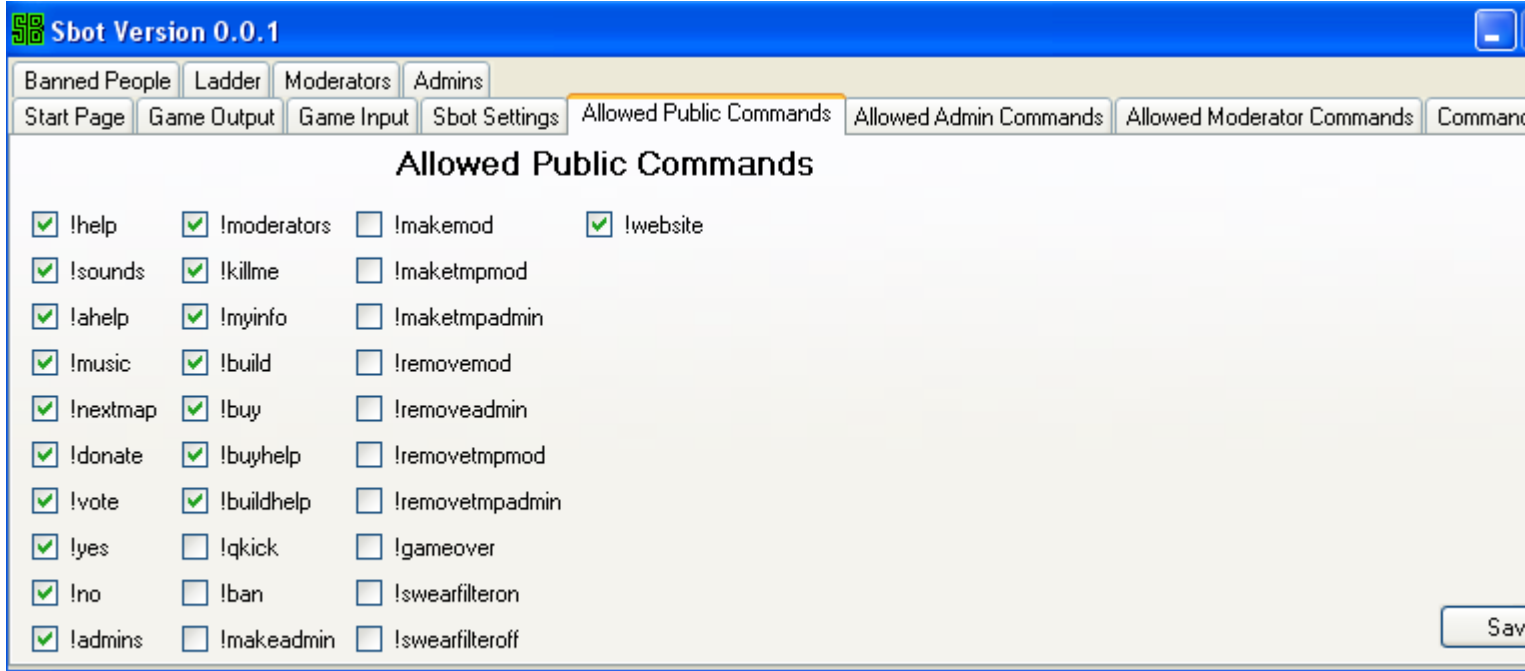
Game input allows you to interact with the game, here you will be able to bring building back to life. give plays point, money et you can take points, money. Spawn vehicals, more or less anything thats possible with the serverside engine.

4) [4.png](#), downloaded 1473 times



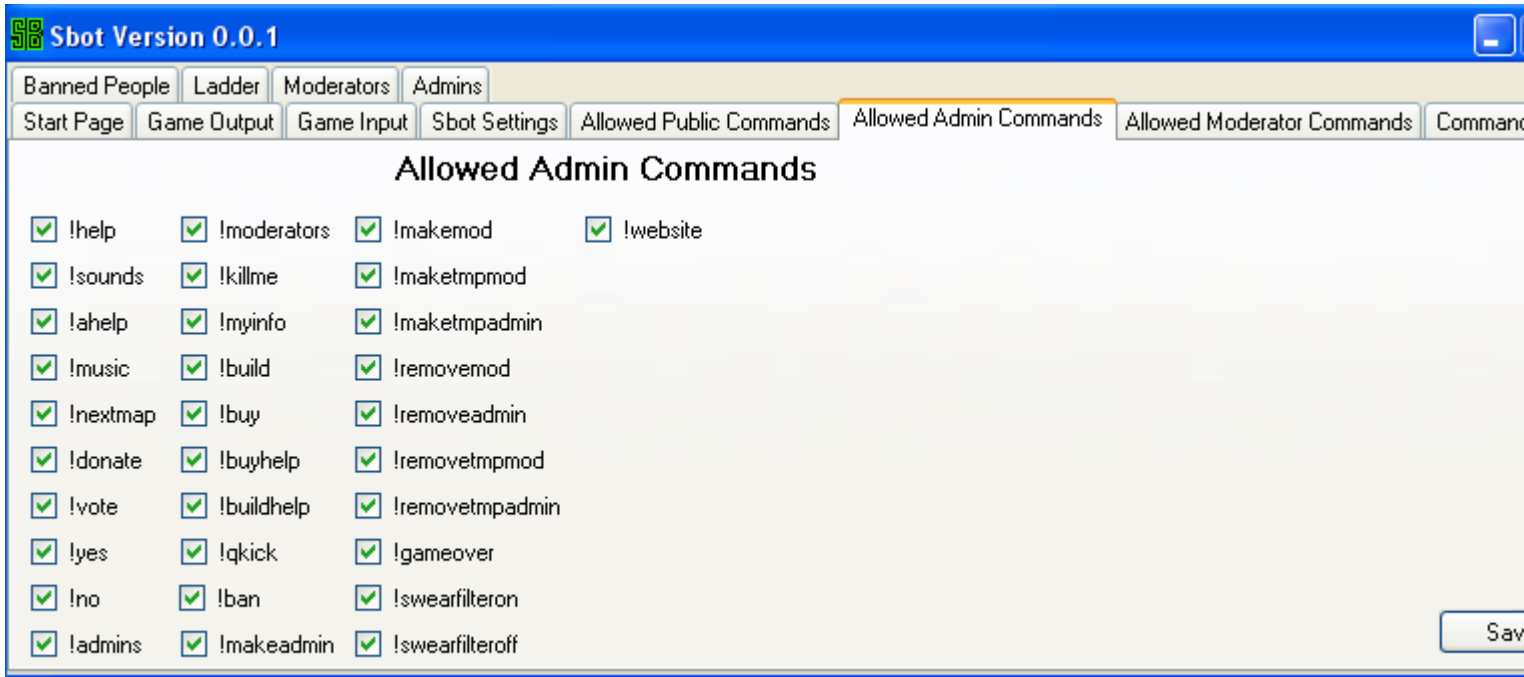
These are the only setting that need to be set in order for the Sbot to be run.

5) [5.png](#), downloaded 1454 times



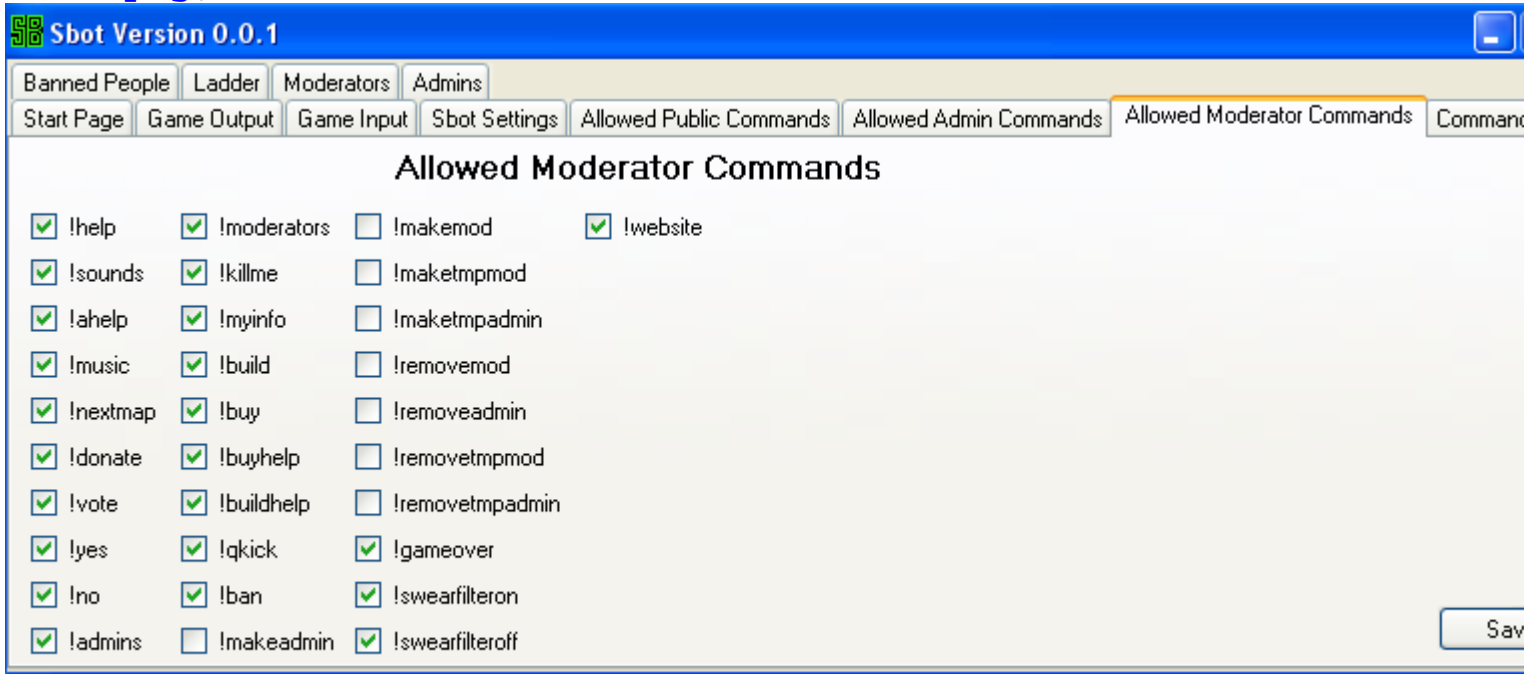
These are the commands that the public are allowed to use.

6) [6.png](#), downloaded 1444 times



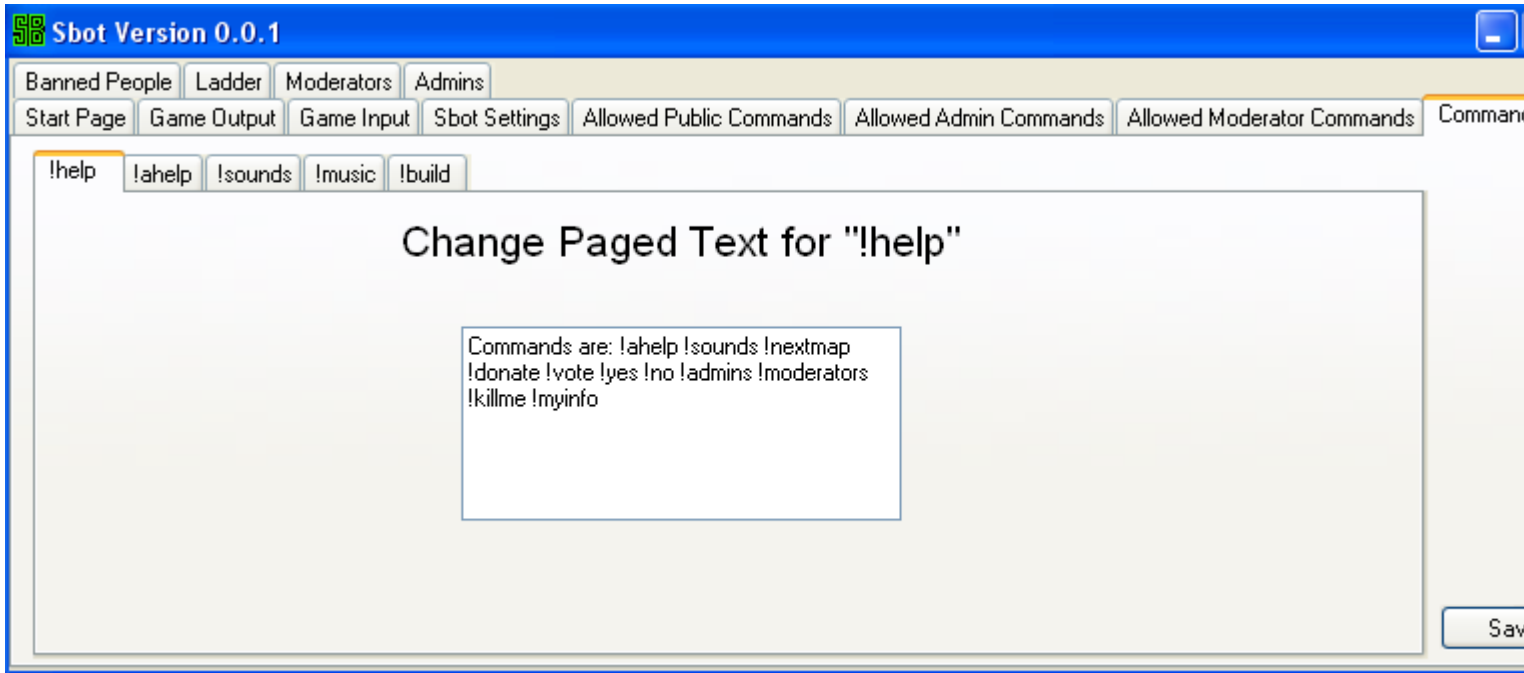
These are the Commands that only admins can use.

7) [7.png](#), downloaded 1451 times



These are the commands that only moderators can use.

8) [8.png](#), downloaded 1438 times



Here is where you can change the different options for each command. not all commands are done yet, not all commands will the e

9) [9.png](#), downloaded 1460 times



This is where you manage and update your banlist

10) [10.png](#), downloaded 1464 times

Ladder

Order by?

Kills

Score

Overall K.D

Buildings Destroyed

Recomendations

Kill rate

1. TestPerson (100 Kills)

This is where you manage and update your servers private ladder