

---

Subject: Re: Possibility of NR for linux!  
Posted by [jnz](#) on Tue, 25 Jul 2006 00:21:24 GMT  
[View Forum Message](#) <> [Reply to Message](#)

---

nope, i coulnt get it to work.

it installed though, these screenys will be big. sry.

i have another idea though that i think will work, but for now i need to go to bed.

as you will see from my avatar. if you give me the source (or give my a discription of what the code does) i can write it in perl.

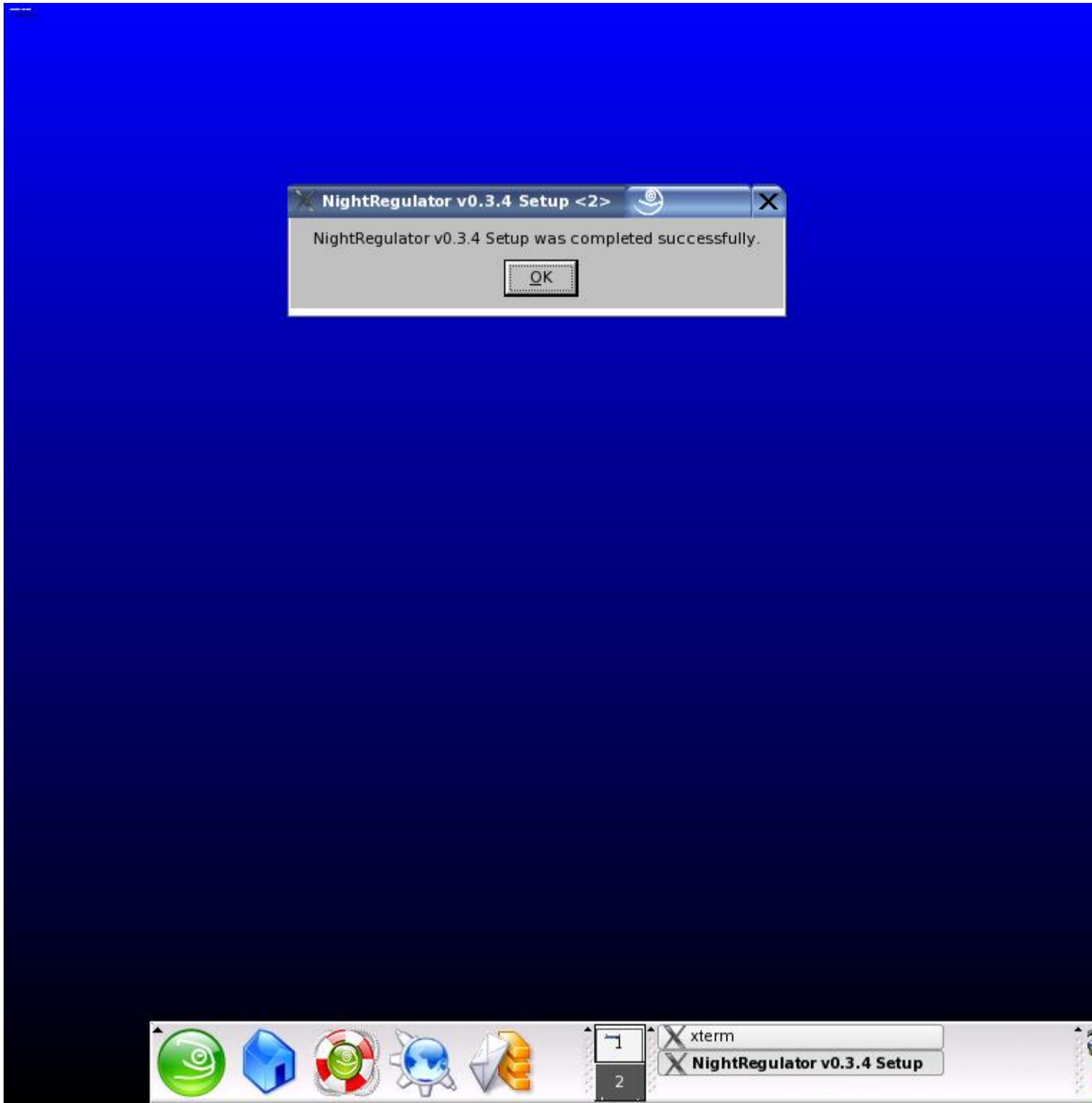
i should be able to get the exe running though.  
if i do get it working i can do a video tutorial of how to do it.

---

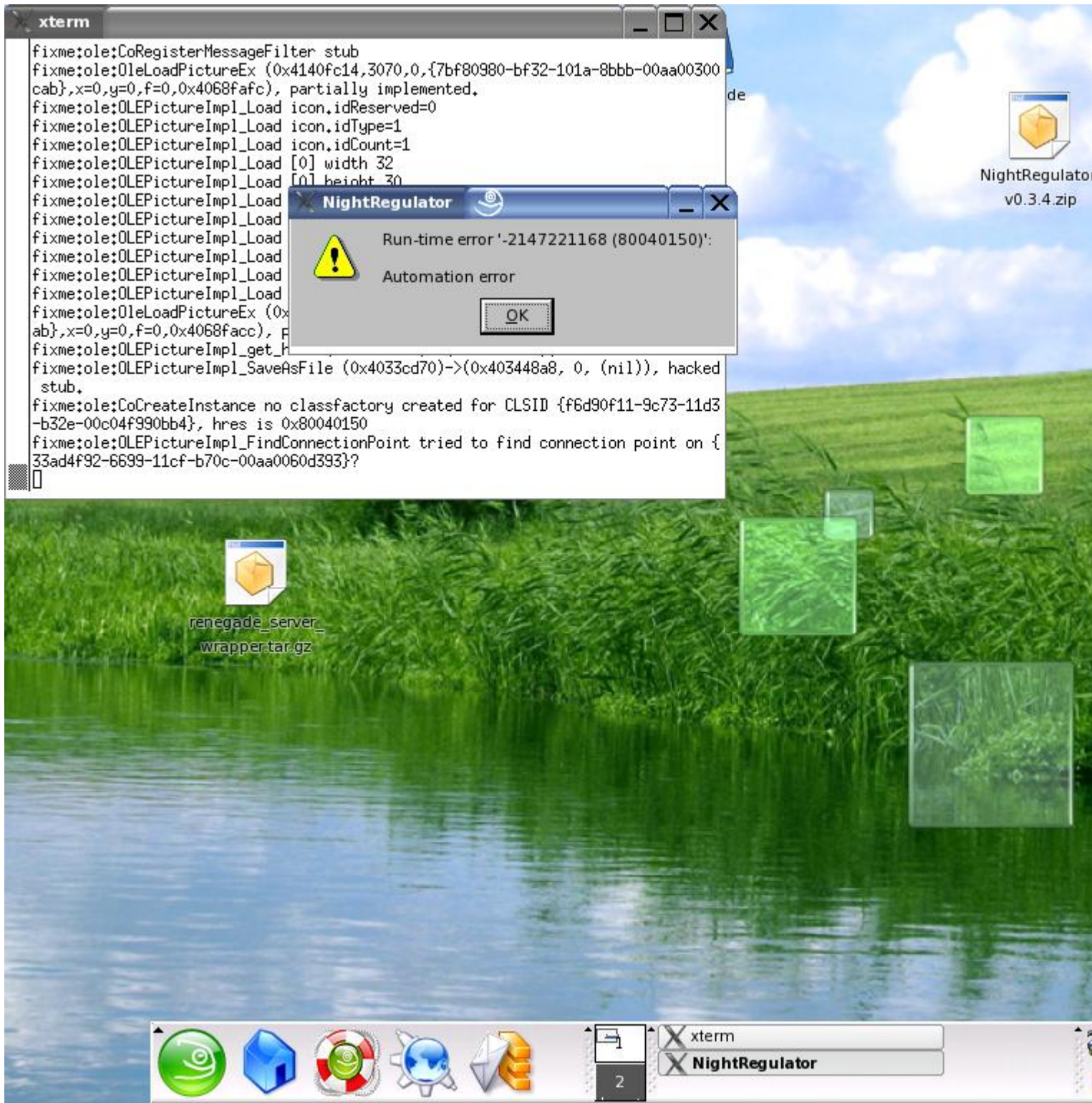
### File Attachments

1) [successfull.JPG](#), downloaded 273 times

---



2) [error.JPG](#), downloaded 242 times



3) [wine\\_output.JPG](#), downloaded 231 times



```
xterm
fixme:ole:OleLoadPictureEx (0x4140fc14,3070,0,{7bf80980-bf32-101a-8bbb-00aa00300cab},x=0,y=0,f=0,0x4068fafc), partially implemented.
fixme:ole:OLEPictureImpl_Load icon.idReserved=0
fixme:ole:OLEPictureImpl_Load icon.idType=1
fixme:ole:OLEPictureImpl_Load icon.idCount=1
fixme:ole:OLEPictureImpl_Load [0] width 32
fixme:ole:OLEPictureImpl_Load [0] height 30
fixme:ole:OLEPictureImpl_Load [0] bColorCount 0
fixme:ole:OLEPictureImpl_Load [0] bReserved 0
fixme:ole:OLEPictureImpl_Load [0] xHotspot 1
fixme:ole:OLEPictureImpl_Load [0] yHotspot 24
fixme:ole:OLEPictureImpl_Load [0] dwDIBSize 3040
fixme:ole:OLEPictureImpl_Load [0] dwDIBOffset 22
fixme:ole:OleLoadPictureEx (0x4140fc14,764,1,{7bf80980-bf32-101a-8bbb-00aa00300cab},x=0,y=0,f=0,0x4068facc), partially implemented.
fixme:ole:OLEPictureImpl_get_hPal (0x40343858)->(0x4068fa78): stub
fixme:ole:OLEPictureImpl_SaveAsFile (0x4033cd70)->(0x403448a8, 0, (nil)), hacked stub.
fixme:ole:CoCreateInstance no classfactory created for CLSID {f6d90f11-9c73-11d3-b32e-00c04f990bb4}, hres is 0x80040150
fixme:ole:OLEPictureImpl_FindConnectionPoint tried to find connection point on {33ad4f92-6699-11cf-b70c-00aa0060d393}?
fixme:ole:CoRegisterMessageFilter stub
dan@linux:~/Desktop/Server/Server>
```

