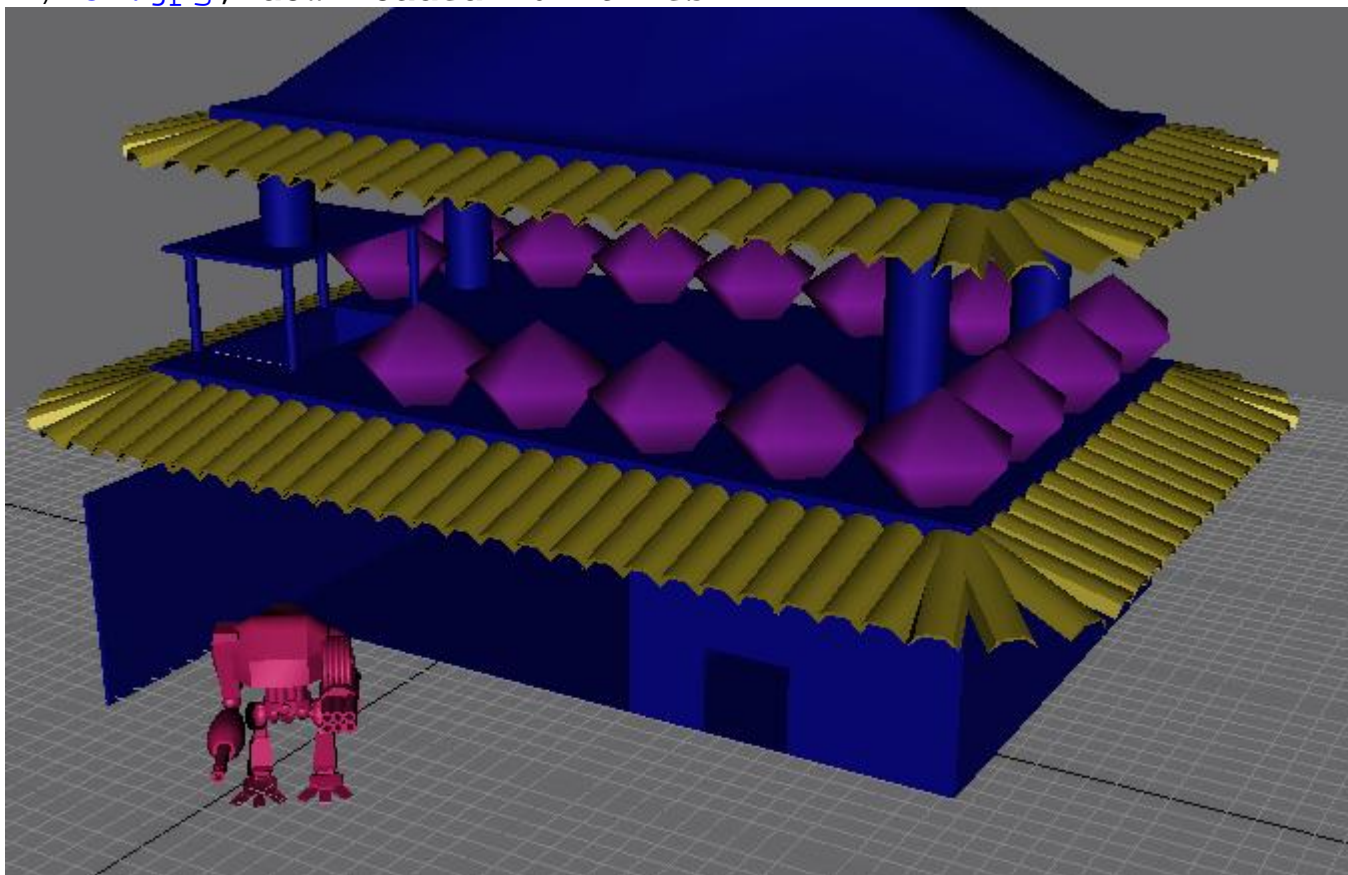

Subject: Re: new totel convection
Posted by [GrayWolf](#) on Tue, 28 Mar 2006 04:37:10 GMT
[View Forum Message](#) <> [Reply to Message](#)

Ok I put a China/Korea war factory type building together. It just the basic lay out. it has the inside and outside done just needs some more detail and textures and doors.

File Attachments

1) [c1.jpg](#), downloaded 264 times



2) [c2.jpg](#), downloaded 267 times

Perspective

