

---

Subject: Another WIP Map

Posted by [JeepRubi](#) on Mon, 16 Jan 2006 21:02:50 GMT

[View Forum Message](#) <> [Reply to Message](#)

---

Ive been working on this map for a couple of days and thought it would be neat to show you an update evry once in a while. This way i can get suggestions on the terrain before i put it into level edit. So far it has no texture and all i have is the terrain for the Nod and GDI bases.

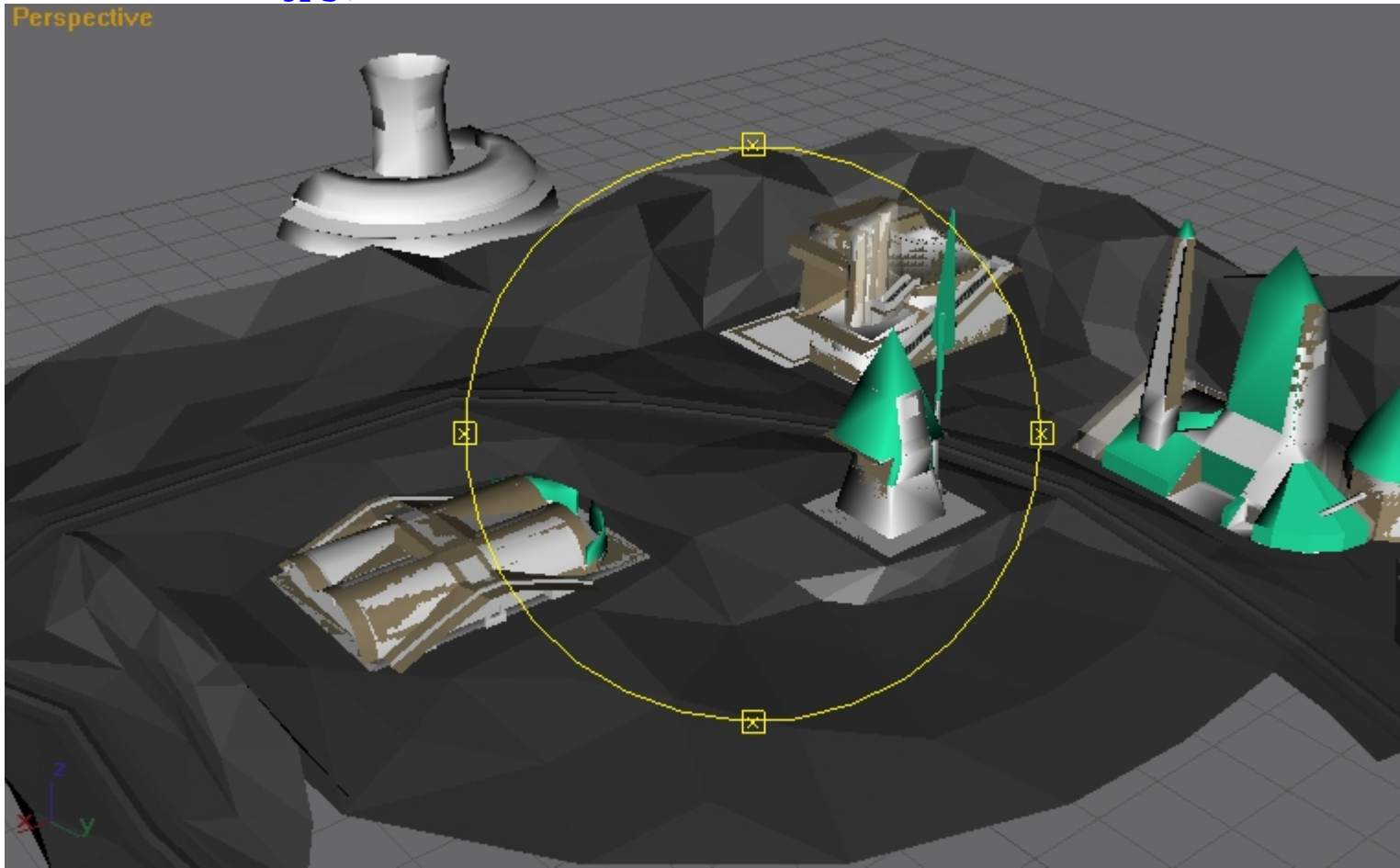
Its gunna take awhile because of the way im modeling the terrain but the end result will be awesome.

### File Attachments

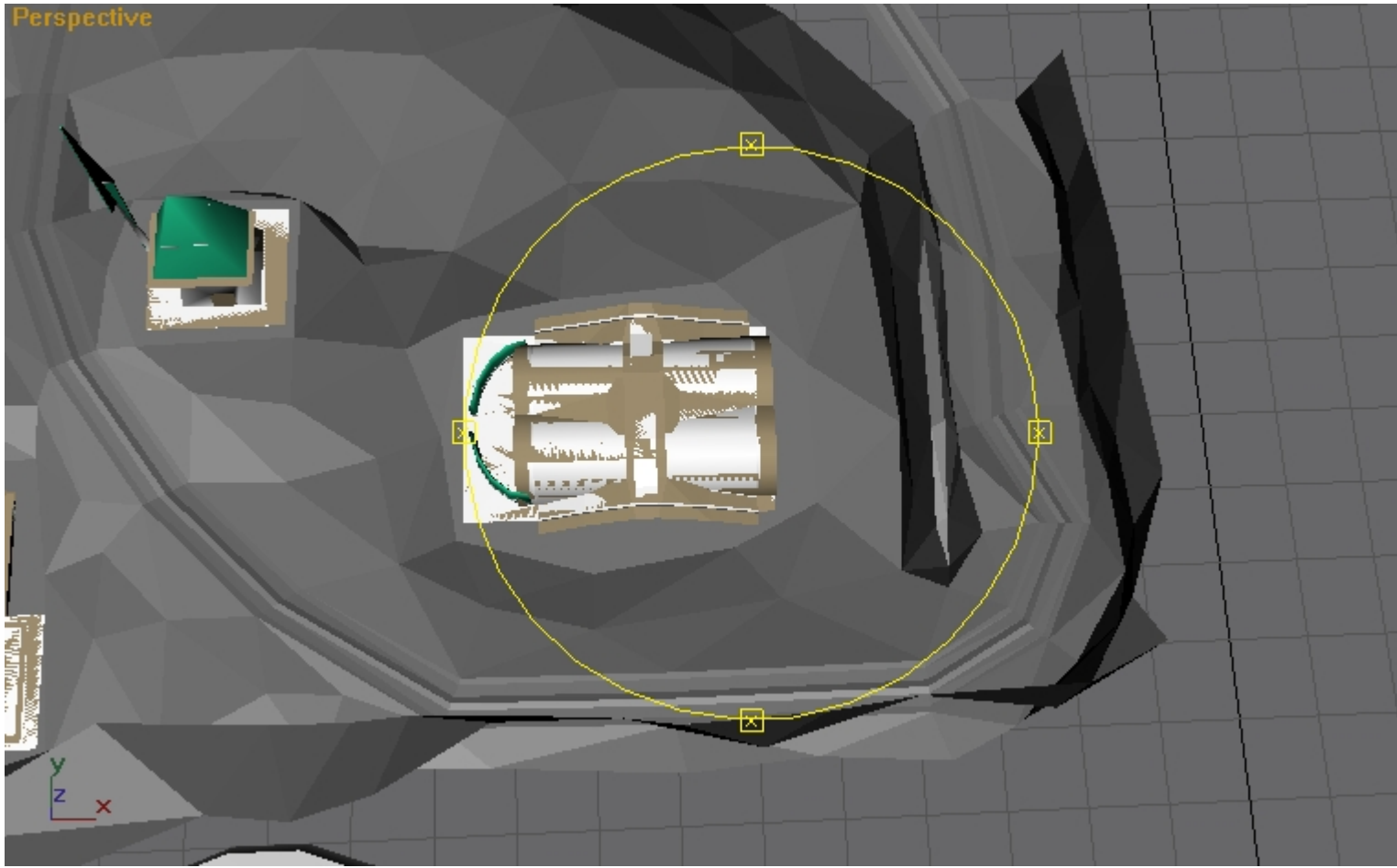
---

1) [GDIBase 1.jpg](#), downloaded 761 times

Perspective

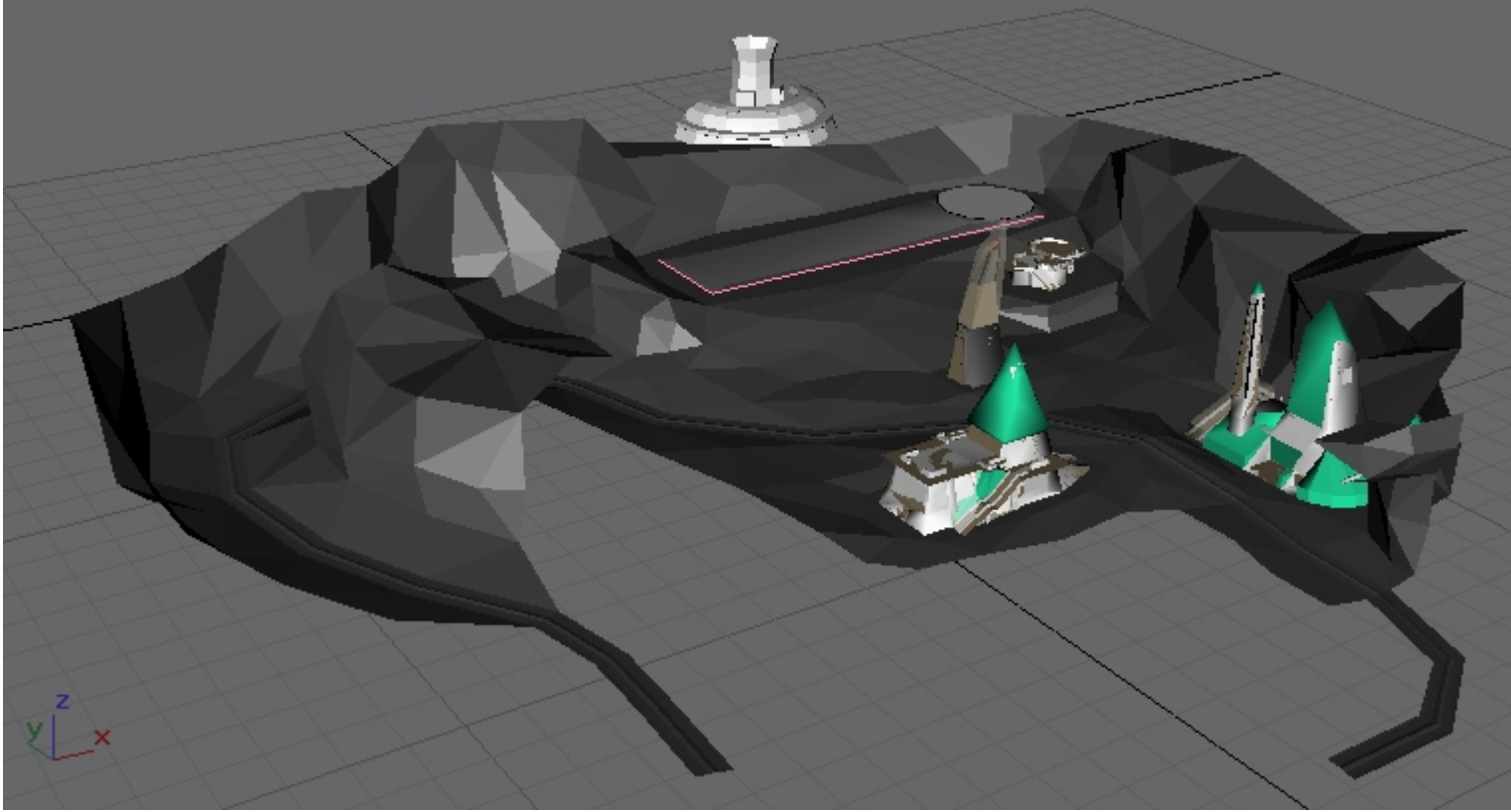


2) [GDIBase 2.jpg](#), downloaded 215 times



3) [Nodbase 1.jpg](#), downloaded 753 times

Perspective



4) [Nodbase 2.jpg](#), downloaded 747 times

