

---

Subject: [Renguard] Problem...

Posted by [Frozenice](#) on Sat, 05 Nov 2005 07:42:54 GMT

[View Forum Message](#) <> [Reply to Message](#)

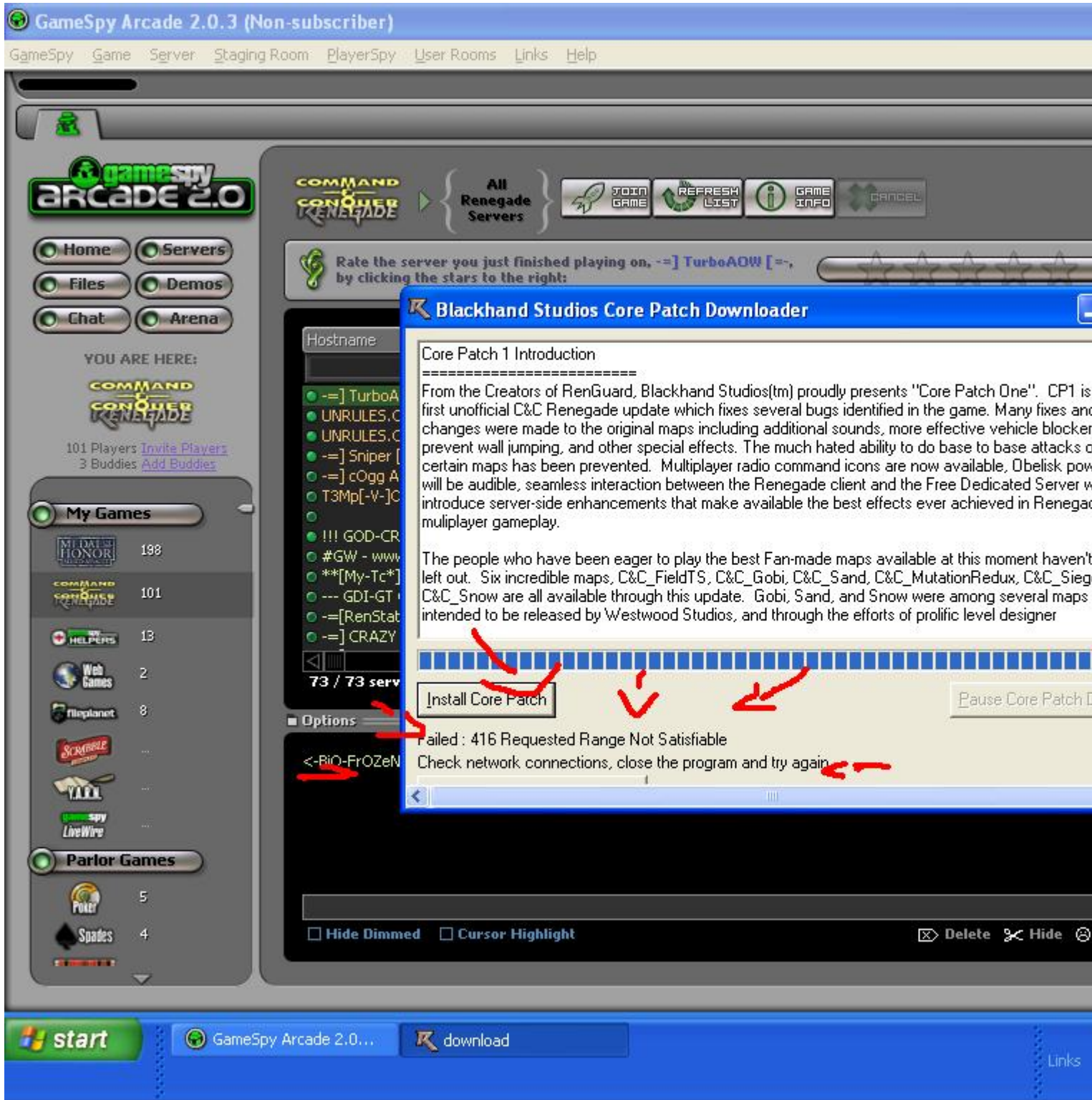
---

Ok i got this when i was trying to install the core patch 1. .. i dont no what else 2 do.. any surrgestions?

#### File Attachments

---

1) [.....loooooookk.JPG](#), downloaded 1053 times



2) .....loooooookk.JPG, downloaded 838 times



- Home
- Servers
- Files
- Demos
- Chat
- Arena

YOU ARE HERE:



101 Players [Invite Players](#)  
3 Buddies [Add Buddies](#)

My Games

- MIDWEST HONOR 198
- COMMAND & CONQUER RENEGADE 101
- HELPER'S 13
- Web Games 2
- fileplanet 8
- SCRIBBLE
- YALL
- GameSpy LiveWire

Parlor Games

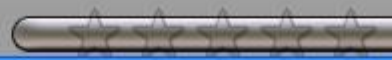
- Poker 5
- Spades 4



All Renegade Servers

- JOIN GAME
- REFRESH LIST
- GAME INFO
- CANCEL

Rate the server you just finished playing on, ==] TurboAOW [==, by clicking the stars to the right:



- Hostname
- ==] TurboA
- UNRULES.C
- UNRULES.C
- ==] Sniper [
- ==] cOgg A
- T3Mp[-V-]C
- !!! GOD-CR
- #GW - www
- \*\*[My-Tc\*]
- GDI-GT
- ==[RenStat
- ==] CRAZY

73 / 73 serv

Options

- <-Bio-FrOZeN

Blackhand Studios Core Patch Downloader

Core Patch 1 Introduction

From the Creators of RenGuard, Blackhand Studios(tm) proudly presents "Core Patch One". CP1 is the first unofficial C&C Renegade update which fixes several bugs identified in the game. Many fixes and changes were made to the original maps including additional sounds, more effective vehicle blockers, prevent wall jumping, and other special effects. The much hated ability to do base to base attacks on certain maps has been prevented. Multiplayer radio command icons are now available, Obelisk power will be audible, seamless interaction between the Renegade client and the Free Dedicated Server will introduce server-side enhancements that make available the best effects ever achieved in Renegade multiplayer gameplay.

The people who have been eager to play the best Fan-made maps available at this moment haven't left out. Six incredible maps, C&C\_FieldTS, C&C\_Gobi, C&C\_Sand, C&C\_MutationRedux, C&C\_Siege, C&C\_Snow are all available through this update. Gobi, Sand, and Snow were among several maps intended to be released by Westwood Studios, and through the efforts of prolific level designer

Progress bar with 73 segments, 73 filled. Buttons: **Install Core Patch**, **Pause Core Patch D**

Failed : 416 Requested Range Not Satisfiable  
Check network connections, close the program and try again

- Hide Dimmed
- Cursor Highlight
- Delete
- Hide